



- (51) **International Patent Classification:**
H02M 3/335 (2006.01) *H02M 3/337* (2006.01)
- (21) **International Application Number:**
PCT/PL2009/000061
- (22) **International Filing Date:**
3 June 2009 (03.06.2009)
- (25) **Filing Language:** English
- (26) **Publication Language:** English
- (30) **Priority Data:**
P-385472 20 June 2008 (20.06.2008) PL
- (71) **Applicants (for all designated States except US):**
AKADEMIA GORNICZO-HUTNICZA IM. STANISLAWA STASZICA [PL/PL]; al. Mickiewicza 30, PL-30-059 Krakow (PL). **FIDELTRONIK IMEL SP. Z.O.O.** [PL/PL]; ul. Beniowskiego 1, PL-34-200 Sucha Beskidzka (PL).
- (72) **Inventors; and**
- (75) **Inventors/Applicants (for US only):** **WOREK, Cezary** [PL/PL]; ul. Rzepichy 40 A, PL-30-240 Krakow (PL). **LIGENZA, Slawomir** [PL/PL]; Sulislawice 43, PL-32-340 Wolbrom (PL).
- (74) **Agent:** **MAGONSKA, Alina**; ul. Dobrego Pasterza 108/106, PL-31-416 Kraków (PL).

- (81) **Designated States (unless otherwise indicated, for every kind of national protection available):** AE, AG, AL, AM, AO, AT, AU, AZ, BA, BB, BG, BH, BR, BW, BY, BZ, CA, CH, CL, CN, CO, CR, CU, CZ, DE, DK, DM, DO, DZ, EC, EE, EG, ES, FI, GB, GD, GE, GH, GM, GT, HN, HR, HU, ID, IL, IN, IS, JP, KE, KG, KM, KN, KP, KR, KZ, LA, LC, LK, LR, LS, LT, LU, LY, MA, MD, ME, MG, MK, MN, MW, MX, MY, MZ, NA, NG, NI, NO, NZ, OM, PG, PH, PL, PT, RO, RS, RU, SC, SD, SE, SG, SK, SL, SM, ST, SV, SY, TJ, TM, TN, TR, TT, TZ, UA, UG, US, UZ, VC, VN, ZA, ZM, ZW.
- (84) **Designated States (unless otherwise indicated, for every kind of regional protection available):** ARIPO (BW, GH, GM, KE, LS, MW, MZ, NA, SD, SL, SZ, TZ, UG, ZM, ZW), Eurasian (AM, AZ, BY, KG, KZ, MD, RU, TJ, TM), European (AT, BE, BG, CH, CY, CZ, DE, DK, EE, ES, FI, FR, GB, GR, HR, HU, IE, IS, IT, LT, LU, LV, MC, MK, MT, NL, NO, PL, PT, RO, SE, SI, SK, TR), OAPI (BF, BJ, CF, CG, CI, CM, GA, GN, GQ, GW, ML, MR, NE, SN, TD, TG).

Declarations under Rule 4.17:

— of inventorship (Rule 4.17(iv))

Published:

— with international search report (Art. 21(3))

(54) **Title:** MULTI-RESONANCE POWER SUPPLY WITH AN INTEGRAL QUALITY FACTOR LIMITER

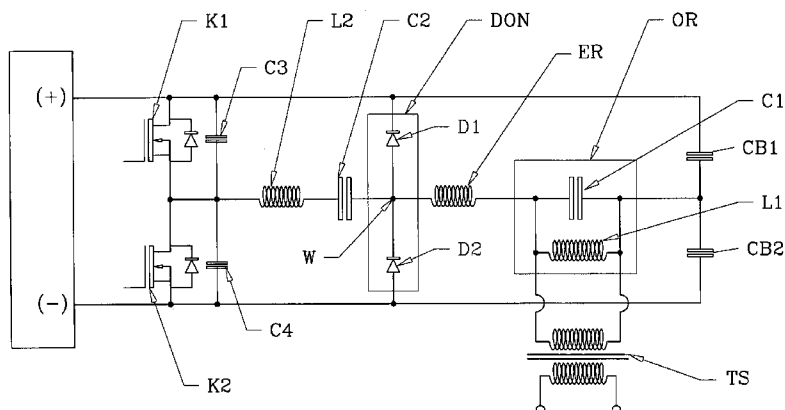


Fig. 1

(57) **Abstract:** Subject of the invention is a multi-resonance power supply with integral quality factor limiter, designed for transformation of direct voltages, characterised by high immunity to overload and rapid load changes. The power supply has the (TS) isolating transformer, with its primary winding connected to the main (OR) resonant circuit having at least one node connected with the set of (K1), (K2) current switches, via the serial resonant circuit, whereby at least one component of the serial resonant circuit is connected to the (DON) diode voltage limiter.

WO 2009/154489 A1

Multi-resonance power supply with an integral quality factor limiter

The subject of the invention is a multi-resonance power supply with an integral quality factor limiter, designed for DC-DC voltage transformation, characterised by high immunity to overload and rapid load changes.

Present-day DC-DC power converters are required to have high reliability, energy efficiency, compact overall dimensions and a low level of radio frequency interference. Such requirements are collectively met by switch-mode power supplies utilizing the resonance phenomenon. Current resonance allows easy control of output power level, whereas voltage resonance allows minimization of undesired phenomena occurring in transient states during the switching process. With the use of voltage resonance, the switching process can be performed at the time instants when the circuit current and voltage values are at their minimum levels and, consequently, allows minimization of switching losses.

A resonance converter designed for operation with an inverter described in the US patent: US 2006/0227577 is known. The converter allows transformation of fluctuating and relatively low voltages obtained from renewable sources of energy to the level required by inverters connected to a power supply network. The converter comprises a parallel resonant circuit to which energy is delivered from a low-voltage source via current switches. The DC/AC conversion process is performed thanks to the employment of the zero-voltage switching method. A high frequency transformer, having its primary winding connected to a parallel resonant circuit, provides electrical isolation and generates high output voltage. The secondary winding of the said transformer is connected to a rectifier with a current, serial resonance circuit. The converter supplies output of 450 V at 25-30% voltage fluctuations.

The converter structure is sensitive to rapid load variations. If the load is suddenly disconnected at the maximum output power, the energy accumulated in the resonant circuit, being as a rule considerably higher than that transferred

to the load during a single commutation period, may cause a current flow in the commutation circuit exceeding limit values.

The subject of the invention is a multi-resonance power supply with an integral quality factor limiter in which the main resonance circuit, comprising its first inductive reactance component and first capacitive reactance component, is connected to the primary winding of the isolating transformer. One of the nodes of the main resonant circuit is connected via an additional reactance component to the common node of diodes connection constituting a diode voltage limiter. The common node connecting diodes with the serial resonant circuit, consisting of a second inductive reactance component and second capacitive reactance component, is connected with a set of current switches. Capacitive reactance components are connected in parallel to the current switches. The second node of the resonant circuit is connected to the common point of blocking capacitors.

In a version of the multi-resonance power supply with an integral quality factor limiter, the main resonant circuit comprises its first inductive reactance component and first capacitive reactance component, whereby the first inductive reactance component constitutes an integral part of the isolating transformer. One of the nodes of the main resonance circuit is connected via an additional reactance component to the common node of diodes connection which constitutes a diode voltage limiter. The common node connecting the diodes with the serial resonant circuit, consisting of a second inductive reactance component and second capacitive reactance component, is connected with a set of current switches. Capacitive reactance components are connected in parallel to the current switches. The second node of the resonant circuit is connected to the common point of blocking capacitors.

In another version of the multi-resonance power supply with an integral quality factor limiter, the main resonant circuit, comprising its first inductive reactance component and first capacitive reactance component, is connected to the primary winding of the isolating transformer. Both nodes of the main resonant circuit are connected via additional reactance components with nodes of diode voltage limiters. Nodes of diode voltage limiters are connected with

sets of current switches via serial resonant circuits, each of them comprising a second inductive reactance component and second capacitive reactance component. Capacitive reactance components are connected in parallel to all current switches.

In the next version of the multi-resonance power supply with an integral quality factor limiter, the main resonant circuit comprises its first inductive reactance component and first capacitive reactance component. The first inductive reactance component constitutes an integral part of the isolating transformer. Both nodes of the main resonant circuit are connected via additional reactance components with nodes of diode voltage limiters. Nodes of diode voltage limiters are connected to sets of current switches via serial resonant circuits, each of them comprising a second inductive reactance component and second capacitive reactance component. Capacitive reactance components are connected in parallel to all current switches.

Figure 1 shows a half-bridge structure of the resonance power supply with an integral quality factor limiter.

Figure 2 shows a version of a half-bridge structure in which the L1 reactance component of the main OR resonant circuit is constituted by distributed inductance of the TS isolating transformer.

Figure 3 shows a solution comprising a bridge structure of the resonance power supply with an integral quality factor limiter.

Figure 4 shows a version of a bridge structure in which the L1 reactance component of the main OR resonant circuit is constituted by distributed inductance of the TS isolating transformer.

The multi-resonance power supply with an integral quality factor limiter comprises the main OR resonant circuit composed of an L1 inductive component and a C1 capacitor. The main OR resonant circuit is connected in parallel to terminals of the primary winding of the TS isolating transformer, which is intended to transform the voltage and isolate the output circuit. Sinusoidal voltage oscillations in the main OR resonant circuit are possible on

condition that the amount of energy accumulated in the circuit is several times greater than the energy delivered to the output during one period. The high quality factor results in peak values of the current in the circuit that are considerably higher than those required by the load.

Oscillations in the main OR resonant circuit are maintained by a cyclic process of commutation of K1 and K2 current switches connected to a DC voltage source. Energy from the DC voltage source is transferred to the main OR resonant circuit via a serial resonant circuit comprising a C2 capacitor and an L2 inductance, connected with an ER inductance. Since the impedance of a serial resonant circuit strongly depends on the frequency, it is possible to control the output power. The serial L2, C2 resonant circuit serves therefore as a controller of power delivered to the main OR resonant circuit, whereby the instantaneous value of the delivered power strongly depends on the operating frequency of the K1 and K2 current switches. On the other hand, the same two-terminal circuit, in connection with the main OR resonant circuit, acts as a voltage transformer. When appropriate values of reactance components are selected for both: the serial and the main resonant circuit, it is possible to achieve voltage transformation. The voltage peak values achieved thereby in the main OR resonant circuit may exceed several times the peak values of the voltage generated by the K1, K2 commutation circuit.

This condition, even though very favourable, is also dangerous for the circuit components since in the case when control is lost by the control circuit due to disturbances or transient states, the limit voltage and/or current values applicable to the components used, may be exceeded. In order to protect the resonant circuit from self-destruction, the DON diode voltage limiter is applied, comprising D1 and D2 diodes connected, respectively, to the negative and positive poles of the main power supply circuit and connected to the serial resonant circuit. Thanks to the use of a DON diode voltage limiter, the voltage peak values at the W node do not exceed the limit values determined by the DC voltage source and the energy surplus from the main OR resonant circuit is returned to the DC voltage source.

An additional inductance ER component allows maintaining certain flexibility of the circuit. Despite the fact that the peak values of the voltage oscillation at the W node are limited to the level determined by the DC voltage source, the voltage transformability is maintained by combining the serial and the main OR resonant circuits. Thus, despite the application of the diode voltage limiter, the voltage oscillation amplitude in the main L1, C1 resonance circuit may exceed that at the W node. Furthermore, such configuration ensures proper operation of the voltage limiter also under the short-circuit condition of the TS isolating transformer winding. The voltage transformation coefficient is determined by selecting an inductance values ratio of the L2 and ER components. CB1, CB2 capacitors connected to one of the nodes of the main OR resonant circuit prevent a DC current component flow in the primary winding of the TS transformer. C3, C4 capacitors are intended to minimise energy loss in the K1, K2 current links during the commutation process.

It should be emphasised that precise control of output parameters of the power supply is achieved by means of a control system that has not been shown in the drawing. Using output parameters, the control circuit selects optimum parameters of control pulses for K1, K2 current switches. Due to the limited response time of the control system and a high switching frequency on the one hand, and a possible occurrence of the current and voltage critical values on the other hand, it is essential to use in resonance converters a separate, additional control circuit of high reliability and fast response. That function in the circuit according to the invention, is performed by the DON diode voltage limiter.

In the multi-resonance power supply shown in Fig. 2, the first L1 inductive reactance component constitutes an integral part of the TS isolating transformer. This version is intended for power supplies operating in a high frequency range (>300 kHz).

In the multi-resonance power supply presented in Fig. 3, a bridge structure of the commutation circuit has been applied. This version is designed for high capacity power supplies.

In the multi-resonance power supply version shown in Fig. 4, a bridge configuration of the commutation circuit is employed to ensure energy transfer to the main OR resonant circuit. The main OR resonant circuit comprises the L1 inductive reactance component which constitutes an integral part of the TS isolating transformer. This version is designed for power supplies operating in a high frequency range.

The structure of the multi-resonance power supply with an integral quality factor limiter, as described herein, exhibits high immunity to rapid load changes. Two-stage voltage transformation, where the first stage comprises a combination of a serial resonance circuit with the main parallel resonance circuit, to which the transformer being the second voltage transformation stage is connected, ensures great flexibility and ease of adaptation to various voltage levels at the converter input side.

Since most of the energy is accumulated in the main resonant circuit, which contains the minimum number of components, a careful design of that circuit, as well as its protection against energy loss due to radiation, allows minimization of power loss and of interference emission.

Patent claims

1. The multi-resonance power supply with an integral quality factor limiter comprising at least one set of current switches, an isolating transformer and at least one resonant circuit characterised by having the main (OR) resonant circuit connected to the primary winding of the (TS) isolating transformer, the main (OR) resonant circuit composed of (L1), (C1) reactance components, whereby one of the nodes of the main (OR) resonant circuit is connected via an additional (ER) reactance component – with the common W node of (D1), (D2) diodes constituting the (DON) diode voltage limiter, furthermore, the common (W) node connecting (D1), (D2) diodes via a serial resonant circuit composed of (L2), (C2) reactance components with the set of (K1), (K2) current switches, and to the set of (K1), (K2) current switches, reactance (C3) and (C4) components, respectively, are connected in parallel, whereby the second node of the main (OR) resonant circuit is connected to the blocking capacitors circuit composed of (CB1) and (CB2) reactance components.

2. The multi-resonance power supply with an integral quality factor limiter comprising at least one set of current switches, an isolating transformer and at least one resonant circuit characterised by having the (OR) resonant circuit composed of (L1), (C1) reactance components, whereby the (L1) inductive reactance component constitutes an integral part of the (TS) isolating transformer, and the second node of the main (OR) resonant circuit is connected – via an additional (ER) reactance component to the common (W) node of (D1), (D2) diodes constituting the (DON) diode voltage limiter, furthermore, the common W node connecting (D1), (D2) diodes via a serial resonant circuit composed of (L2), (C2) reactance components with the set of (K1), (K2) current switches, and to the set of (K1), (K2) current switches, reactance (C3) and (C4) components are, respectively, connected in parallel, whereby the second node of the main (OR) resonant circuit is connected to the

blocking capacitors circuit composed of (CB1) and (CB2) reactance components.

3. The multi-resonance power supply with an integral quality factor limiter comprising at least one set of current switches, an isolating transformer and at least one resonant circuit characterised by having the (OR) resonant circuit connected to the primary winding of the (TS) isolating transformer, the main (OR) resonant circuit composed of (L1), (C1) reactance components, whereby both nodes of the main (OR) resonant circuit are connected – via (ER1) and (ER2) reactance components – with (W1) and (W2) nodes of the (DON1) and (DON2) diode voltage limiters, which are further connected to the sets of (K1), (K2) and (K3), (K4) current switches, with resonant circuits composed, respectively, of (L2), (C2) and (L2B), (CB2) reactance components, whereby to (K1), (K2) current switches (C3) and (C4) components, respectively, have been connected in parallel and, to (K3), (K4) current switches, (C5) and (C6) components have been connected, respectively.

4. The multi-resonance power supply with an integral quality factor limiter comprising at least one set of current switches, an isolating transformer and at least one resonant circuit characterised by having the main (OR) resonant circuit composed of (L1), (C1) reactance components, whereby the (L1) inductive reactance component constitutes an integral part of the (TS) isolating transformer, furthermore, both nodes of the main (OR) resonant circuit are connected – through (ER1) and (ER2) reactance components – with (W1) and (W2) nodes of the (DON1) and (DON2) diode voltage limiters, which are further connected to the sets of (K1), (K2) and (K3), (K4) current switches, with resonant circuits composed, respectively, of (L2), (C2) and (L2B), (CB2) reactance components, whereby to (K1), (K2) current switches (C3) and (C4) components, respectively, have been connected in parallel and, to (K3), (K4) current switches, (C5) and (C6) components have been connected, respectively.

List of symbols:**Multi-resonance power supply with an integral quality factor limiter**

TS – isolating transformer,

OR – main resonant circuit,

L1, C1, L2, C2, C3, C4, C5, C6, CB1, CB2 L2B, C2B – reactance components,

ER, ER1, ER2 – additional reactance components,

D1, D2 – diodes,

DON, DON1, DON2 – diode voltage limiters,

K1, K2, K3, K4 – current switches,

W, W1, W2 – nodes.

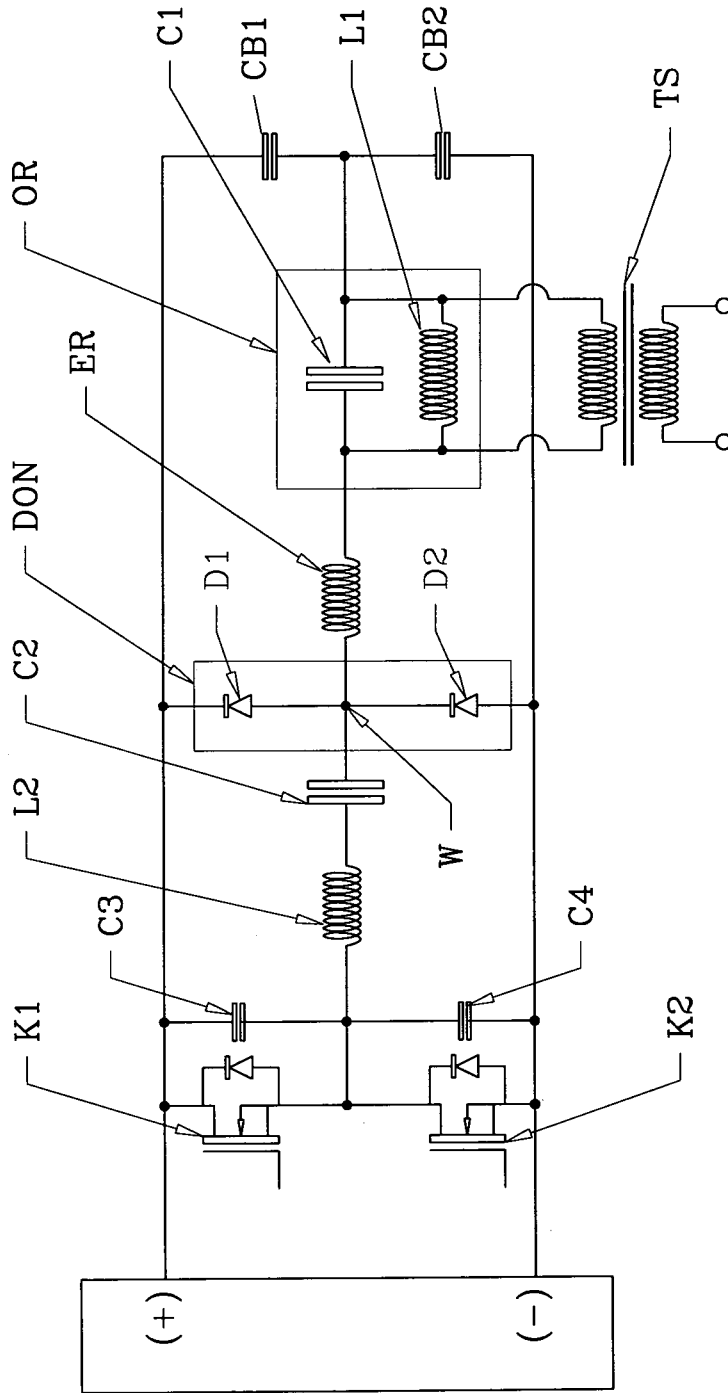


Fig. 1

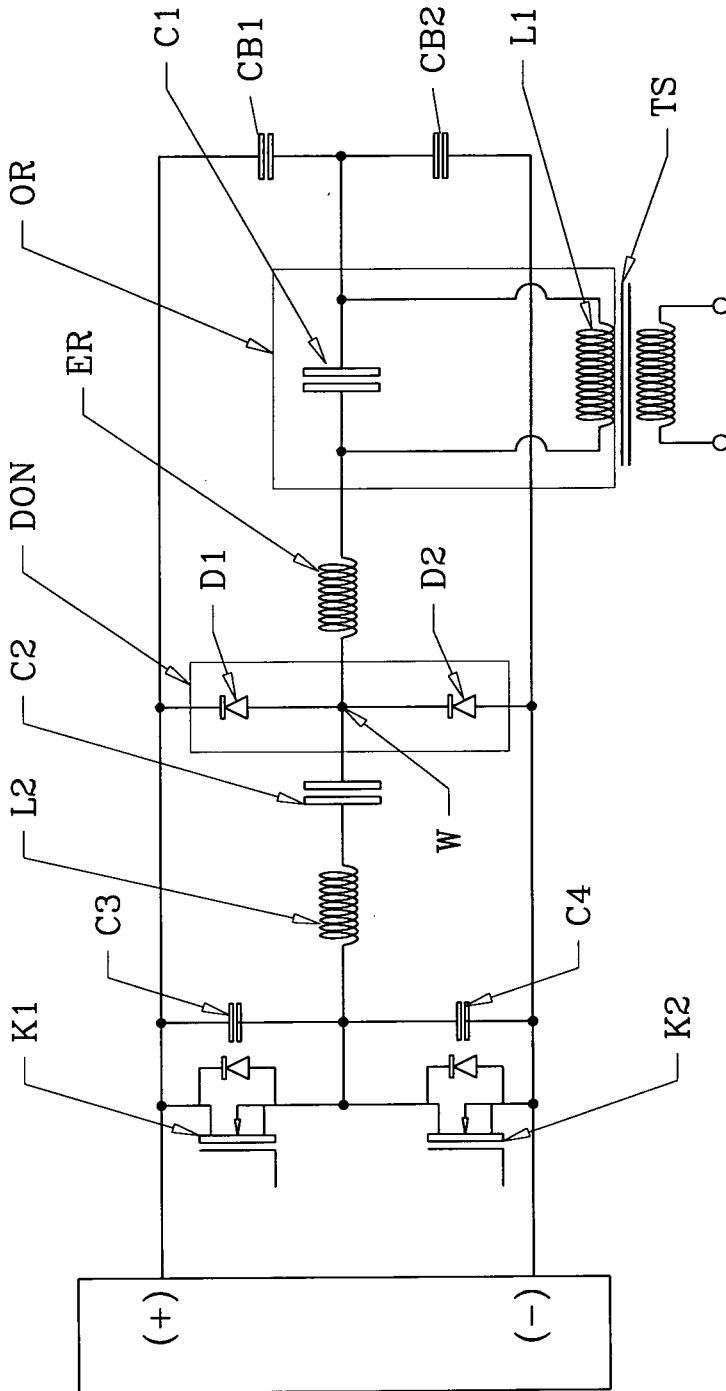


Fig. 2

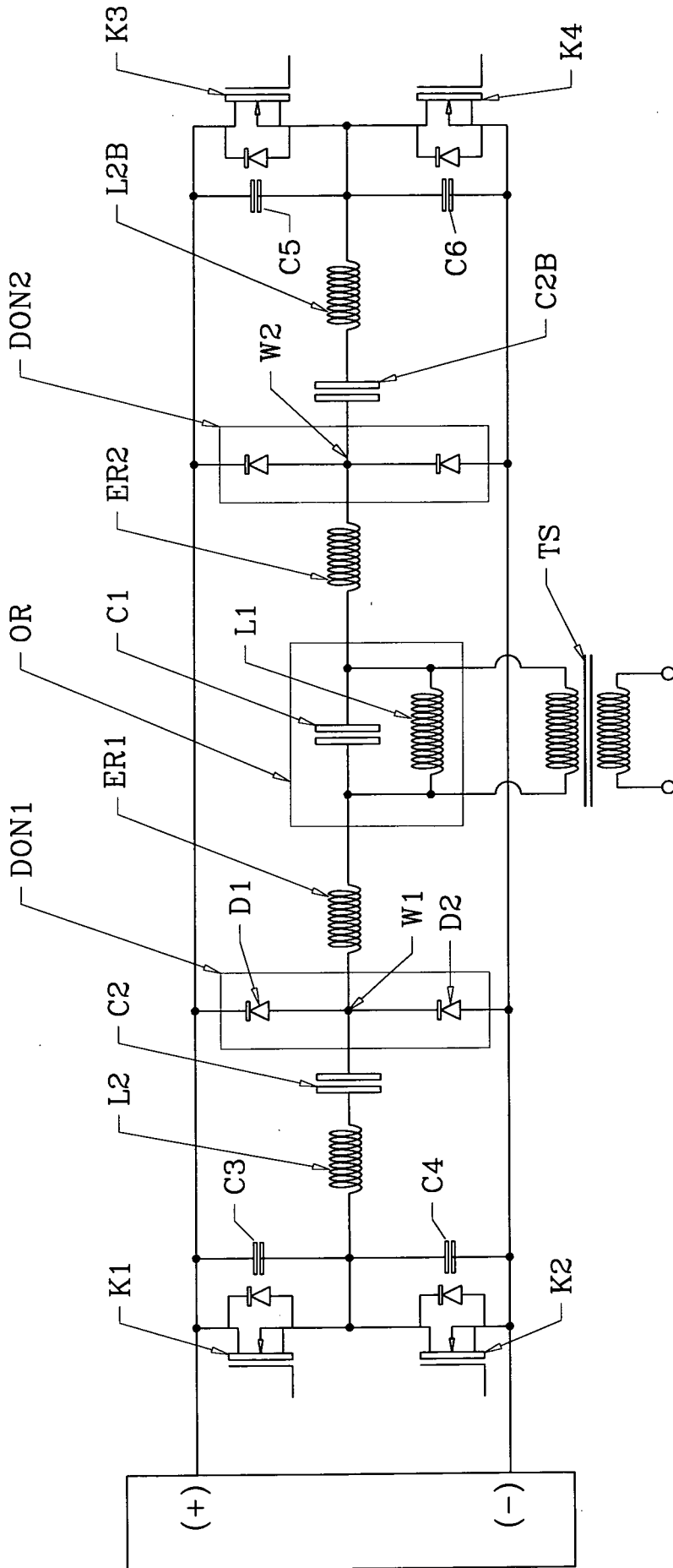


Fig. 3

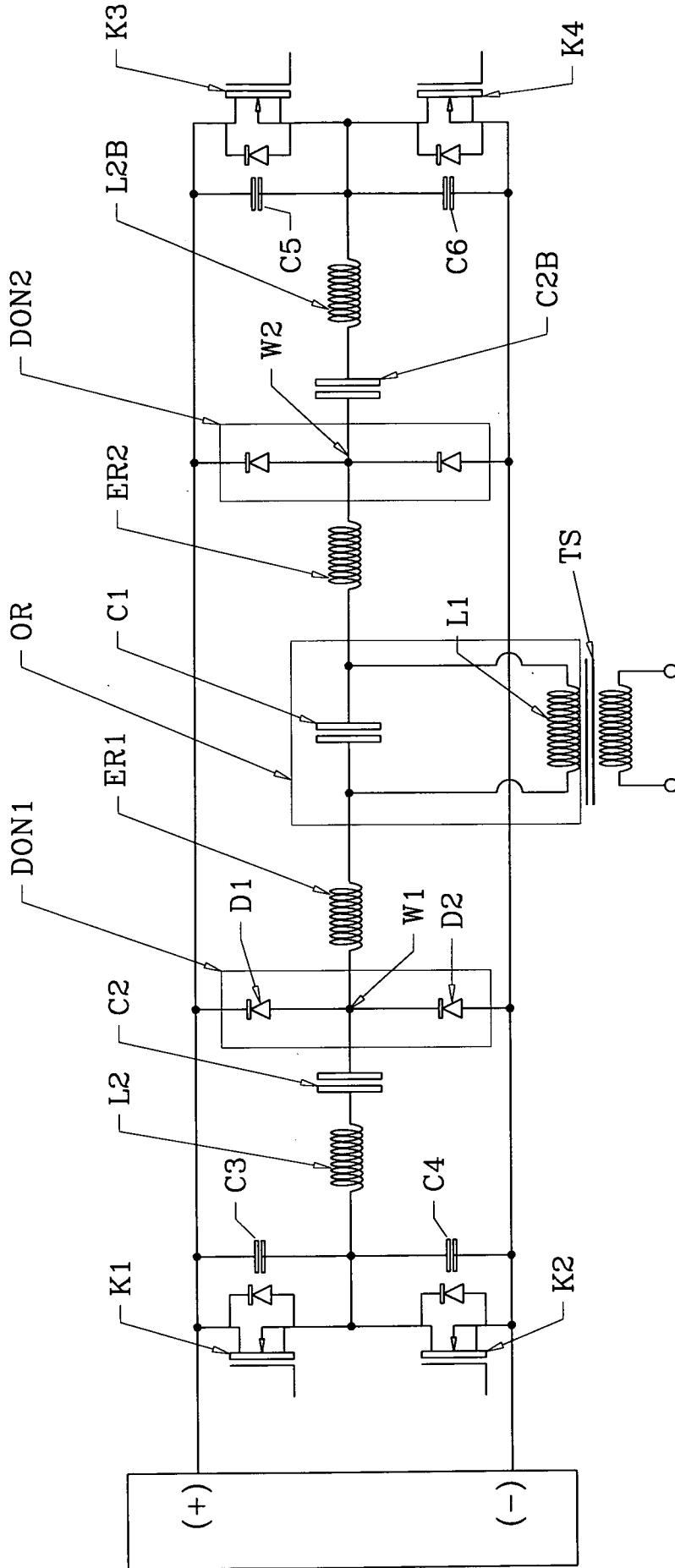


Fig. 4

INTERNATIONAL SEARCH REPORT

International application No PCT/PL2009/000061

A. CLASSIFICATION OF SUBJECT MATTER
 INV. H02M3/335 H02M3/337

According to International Patent Classification (IPC) or to both national classification and IPC

B. FIELDS SEARCHED

Minimum documentation searched (classification system followed by classification symbols)
 H02M

Documentation searched other than minimum documentation to the extent that such documents are included in the fields searched

Electronic data base consulted during the international search (name of data base and, where practical, search terms used)

EPO-Internal, WPI Data

C. DOCUMENTS CONSIDERED TO BE RELEVANT

Category*	Citation of document, with indication, where appropriate, of the relevant passages	Relevant to claim No.
A	US 6 650 551 B1 (MANOLO MARIANNO) 18 November 2003 (2003-11-18) abstract figure 5 column 2, line 7 - line 13 column 4, line 67 - column 5, line 4	1
A	US 4 691 273 A (YUTAKA KUWATA ET AL.) 1 September 1987 (1987-09-01) abstract figure 2 column 4, line 12 - column 5, line 14 column 9, line 3 - line 10	1
	----- -/--	

Further documents are listed in the continuation of Box C.

See patent family annex.

* Special categories of cited documents :

- *A* document defining the general state of the art which is not considered to be of particular relevance
- *E* earlier document but published on or after the international filing date
- *L* document which may throw doubts on priority claim(s) or which is cited to establish the publication date of another citation or other special reason (as specified)
- *O* document referring to an oral disclosure, use, exhibition or other means
- *P* document published prior to the international filing date but later than the priority date claimed

- *T* later document published after the international filing date or priority date and not in conflict with the application but cited to understand the principle or theory underlying the invention
- *X* document of particular relevance; the claimed invention cannot be considered novel or cannot be considered to involve an inventive step when the document is taken alone
- *Y* document of particular relevance; the claimed invention cannot be considered to involve an inventive step when the document is combined with one or more other such documents, such combination being obvious to a person skilled in the art.
- *&* document member of the same patent family

Date of the actual completion of the international search

13 August 2009

Date of mailing of the international search report

21/08/2009

Name and mailing address of the ISA/

European Patent Office, P.B. 5818 Patentlaan 2
 NL - 2280 HV Rijswijk
 Tel. (+31-70) 340-2040,
 Fax: (+31-70) 340-3016

Authorized officer

Lund, Michael

INTERNATIONAL SEARCH REPORT

International application No
PCT/PL2009/000061

C(Continuation). DOCUMENTS CONSIDERED TO BE RELEVANT

Category*	Citation of document, with indication, where appropriate, of the relevant passages	Relevant to claim No.
A	US 4 488 213 A (WOLTER BUIKEMA) 11 December 1984 (1984-12-11) abstract figures 5,6 column 4, line 6 - line 32 -----	1
A	GB 2 393 336 A (COUTANT LAMBDA LIMITED) 24 March 2004 (2004-03-24) abstract figure 1 page 5, line 9 - line 33 -----	1
A	EP 0 332 436 A (ORIGIN ELECTRIC) 13 September 1989 (1989-09-13) abstract column 11, line 18 - line 28 -----	1

INTERNATIONAL SEARCH REPORT

Information on patent family members

International application No PCT/PL2009/000061

Patent document cited in search report	Publication date	Patent family member(s)	Publication date
US 6650551	B1	18-11-2003	CN 1467904 A 14-01-2004
			GB 2394128 A 14-04-2004
US 4691273	A	01-09-1987	DE 3789146 D1 31-03-1994
			EP 0273622 A2 06-07-1988
			JP 1834040 C 29-03-1994
			JP 5046189 B 13-07-1993
			JP 63148864 A 21-06-1988
US 4488213	A	11-12-1984	DE 3267011 D1 28-11-1985
			EP 0071285 A1 09-02-1983
			NL 8103474 A 16-02-1983
GB 2393336	A	24-03-2004	AU 2003269155 A1 08-04-2004
			WO 2004027968 A1 01-04-2004
			JP 4166219 B2 15-10-2008
			JP 2006500889 T 05-01-2006
			US 2006176034 A1 10-08-2006
EP 0332436	A	13-09-1989	CA 1318349 C 25-05-1993
			DE 68926585 D1 11-07-1996
			DE 68926585 T2 06-02-1997
			US 5075836 A 24-12-1991