



(19) **United States**

(12) **Patent Application Publication**
Chen et al.

(10) **Pub. No.: US 2022/0196829 A1**
(43) **Pub. Date: Jun. 23, 2022**

(54) **RADAR REFERENCE MAP GENERATION**

Publication Classification

(71) Applicant: **Aptiv Technologies Limited**, St. Michael (BB)

(72) Inventors: **Nanhu Chen**, Lafayette, IN (US); **Amith Somanath**, Woodland Hills, CA (US); **Mohamed A. Moawad**, Westfield, IN (US); **Aniello Sorrentino**, Wuppertal (DE); **Michael H. Laur**, Mission Viejo, CA (US); **Jakub Porebski**, Kraków (PL); **Aron Sommer**, Köln (DE); **Kai Zhang**, Carmel, IN (US); **Uri Iurgel**, Wuppertal (DE); **Alexander Ioffe**, Bonn (DE); **Krzysztof Kogut**, Kraków (PL); **Ceyhan Karabulut**, Oberhausen (DE); **Damjan Karanovic**, Kamp-Lintfort (DE)

(51) **Int. Cl.**
G01S 13/89 (2006.01)
G06N 7/00 (2006.01)
B60W 40/00 (2006.01)

(52) **U.S. Cl.**
CPC **G01S 13/89** (2013.01); **B60W 2420/52** (2013.01); **B60W 40/00** (2013.01); **G06N 7/005** (2013.01)

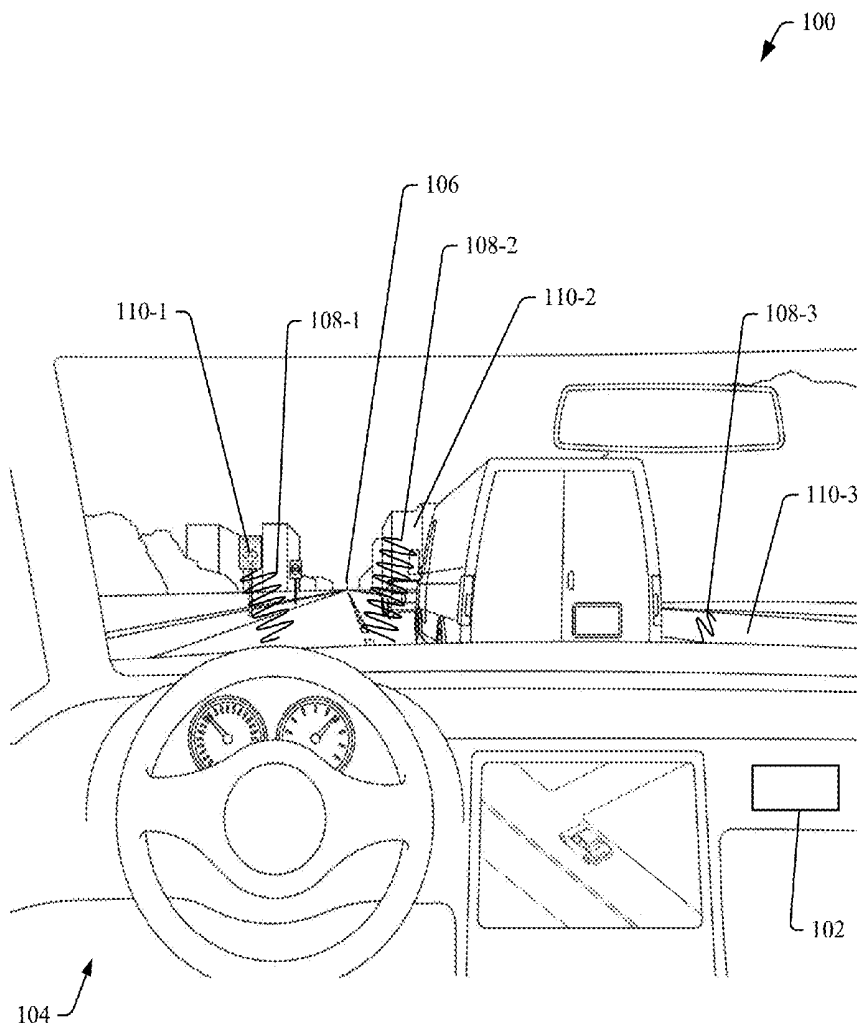
(21) Appl. No.: **17/367,303**
(22) Filed: **Jul. 2, 2021**

Related U.S. Application Data

(60) Provisional application No. 63/146,483, filed on Feb. 5, 2021, provisional application No. 63/127,049, filed on Dec. 17, 2020.

(57) **ABSTRACT**

Methods and systems are described that enable radar reference map generation. A radar occupancy grid is received, and radar attributes are determined from occupancy probabilities within the radar occupancy grid. Radar reference map cells are formed, and the radar attributes are used to determine Gaussians for the radar reference map cells that contain a plurality of the radar attributes. A radar reference map is then generated that includes the Gaussians determined for the radar referenced map cells that contain the plurality of radar attributes. By doing so, the generated radar reference map is accurate while being spatially efficient.



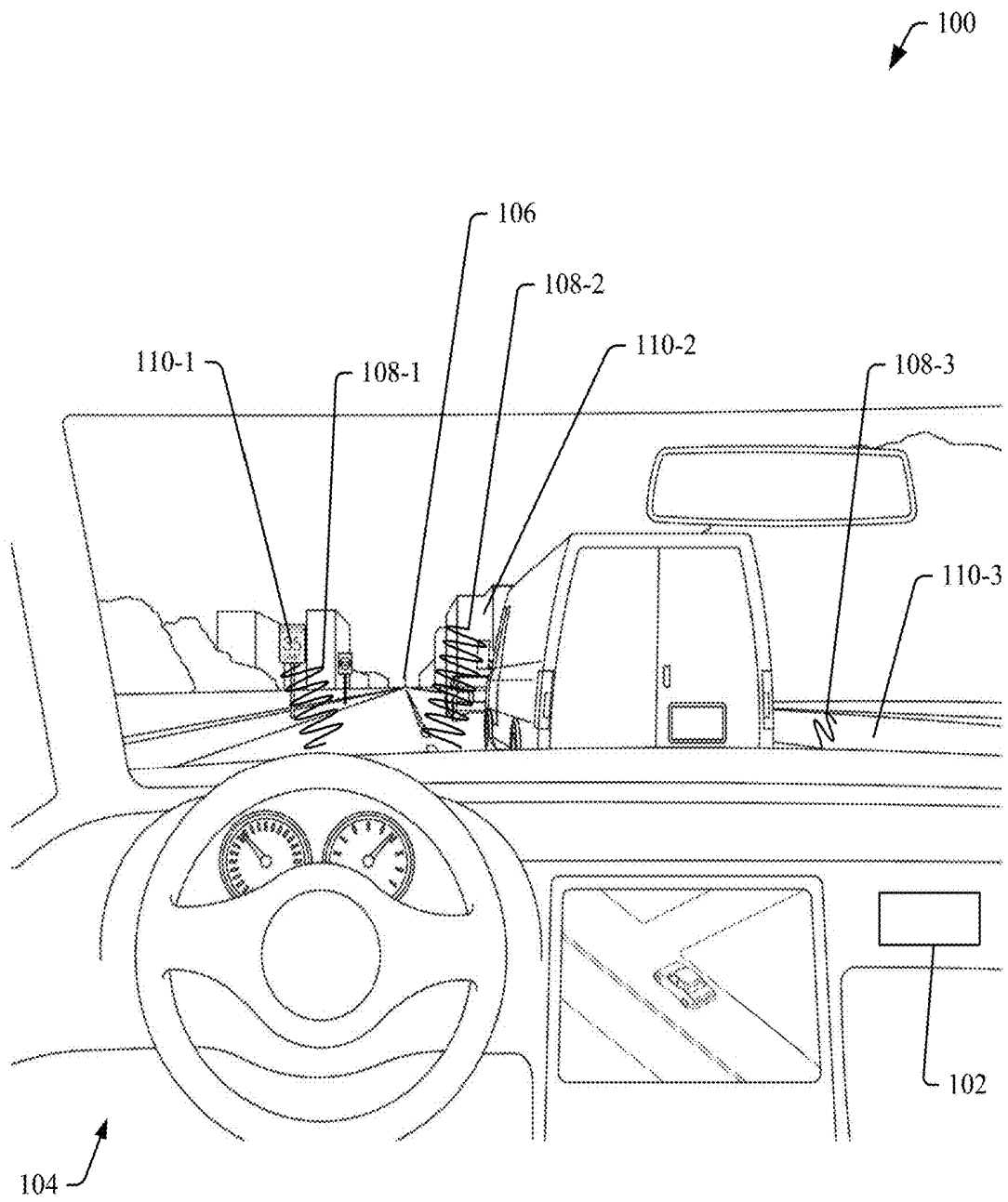


Fig. 1

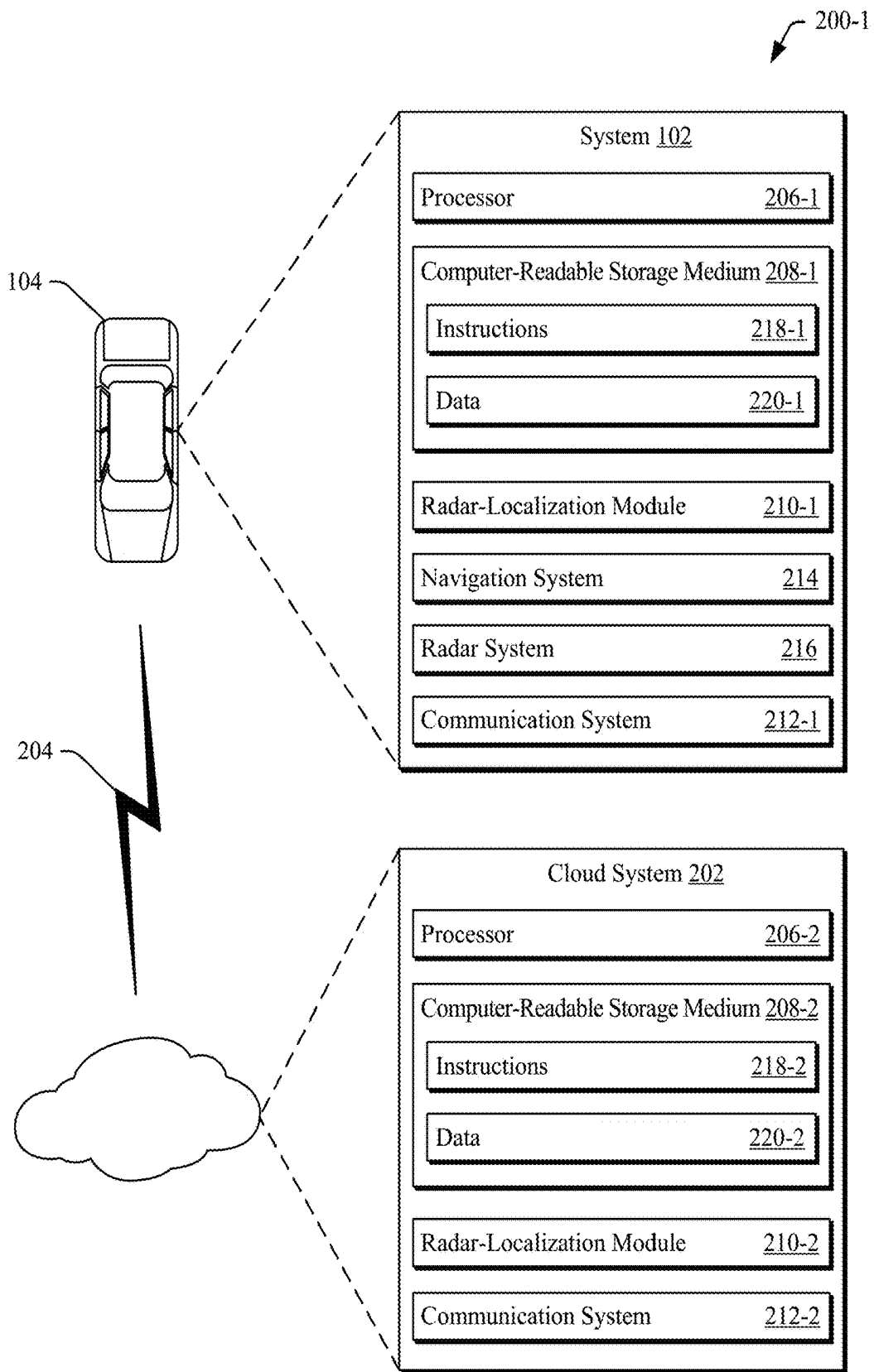


Fig. 2-1

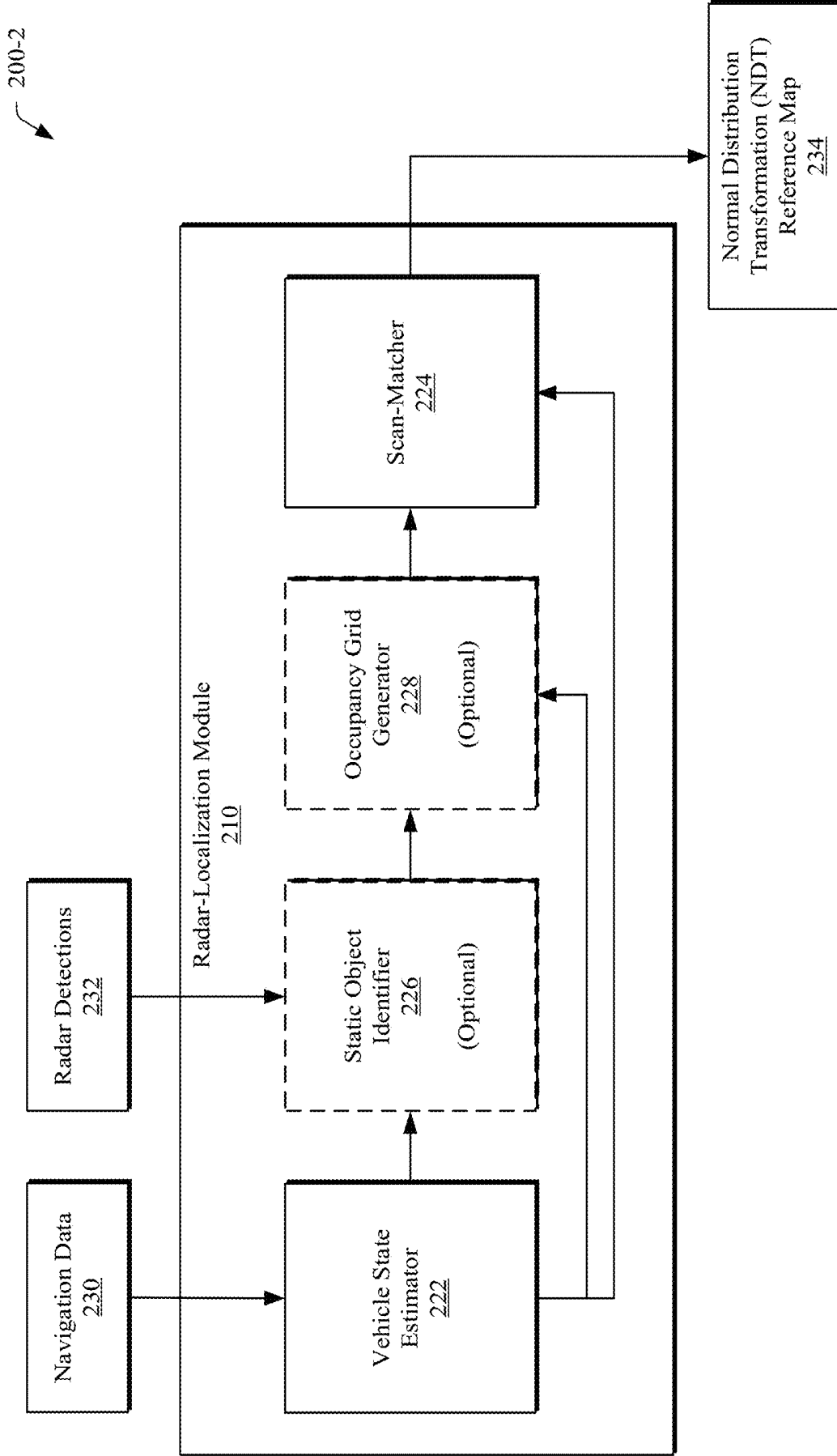


Fig. 2-2

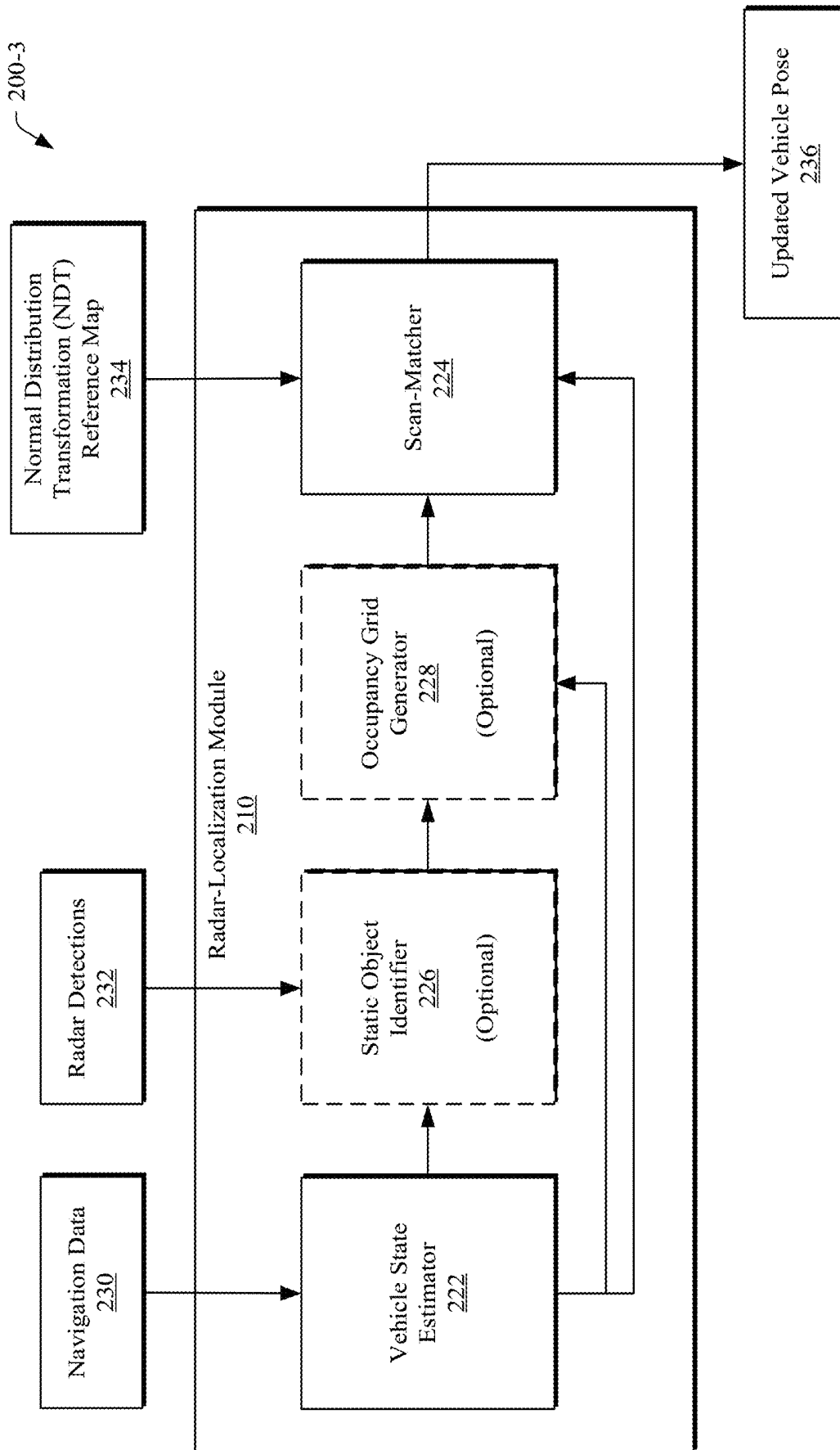


Fig. 2-3

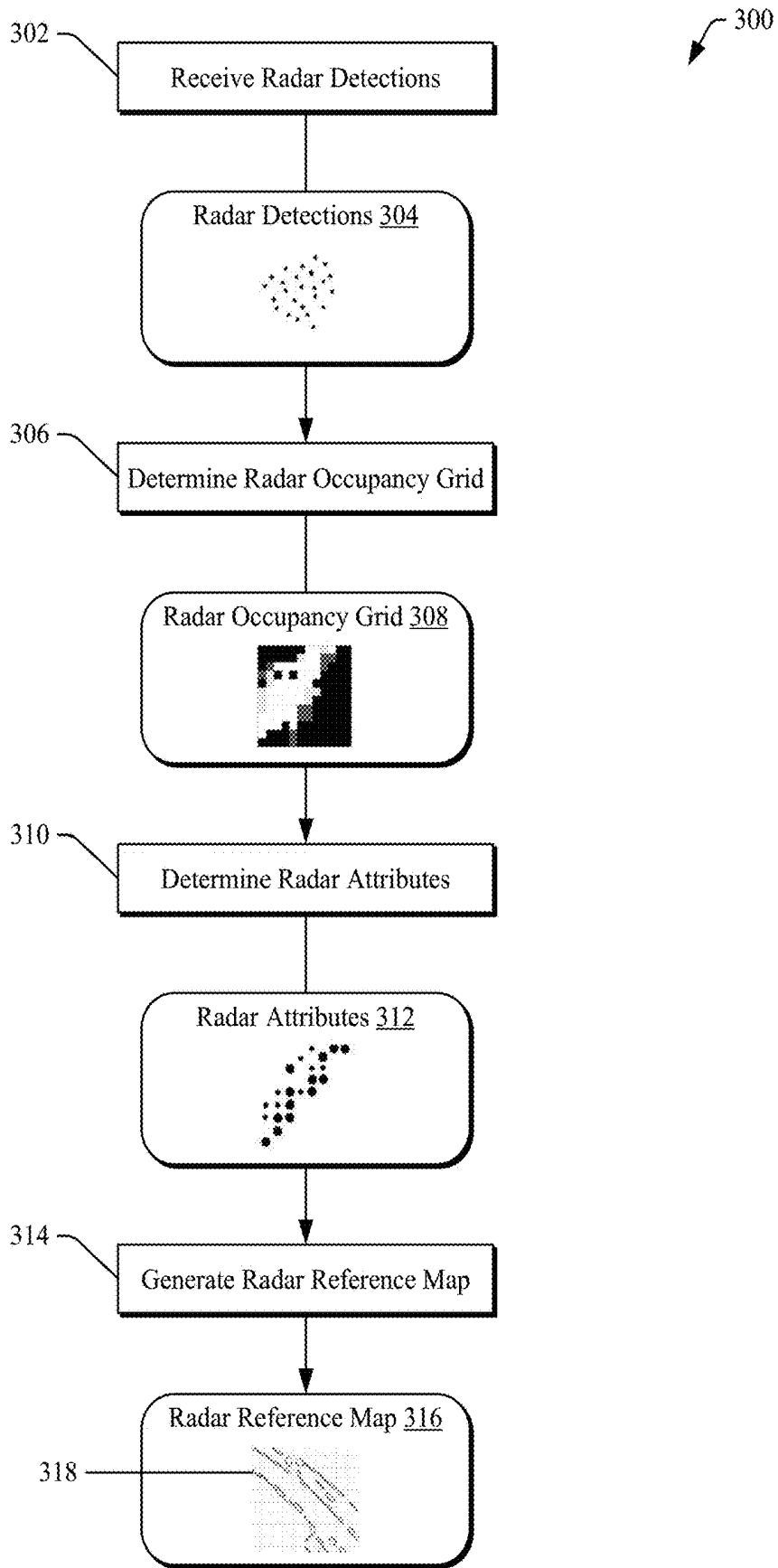


Fig. 3

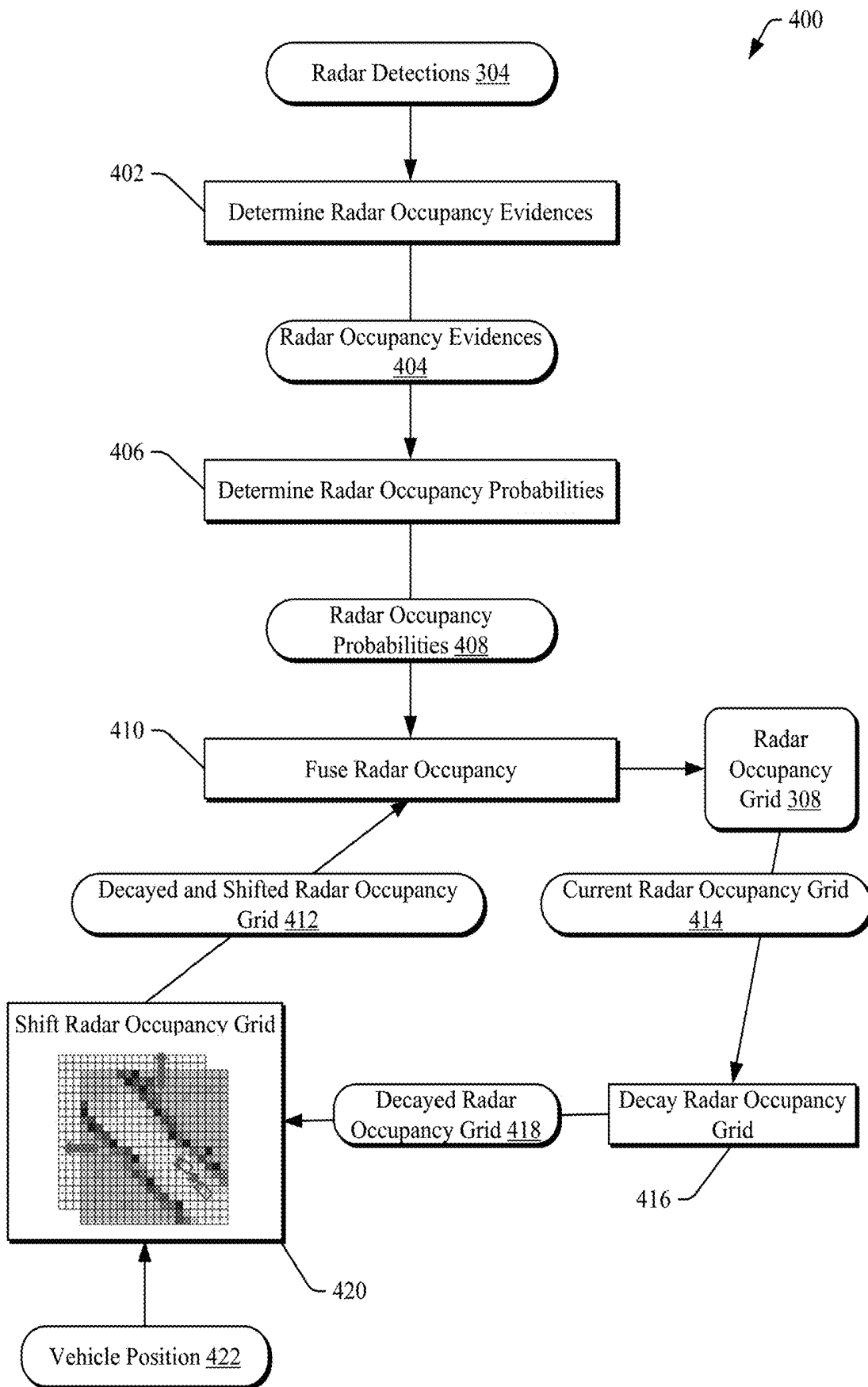


Fig. 4

500

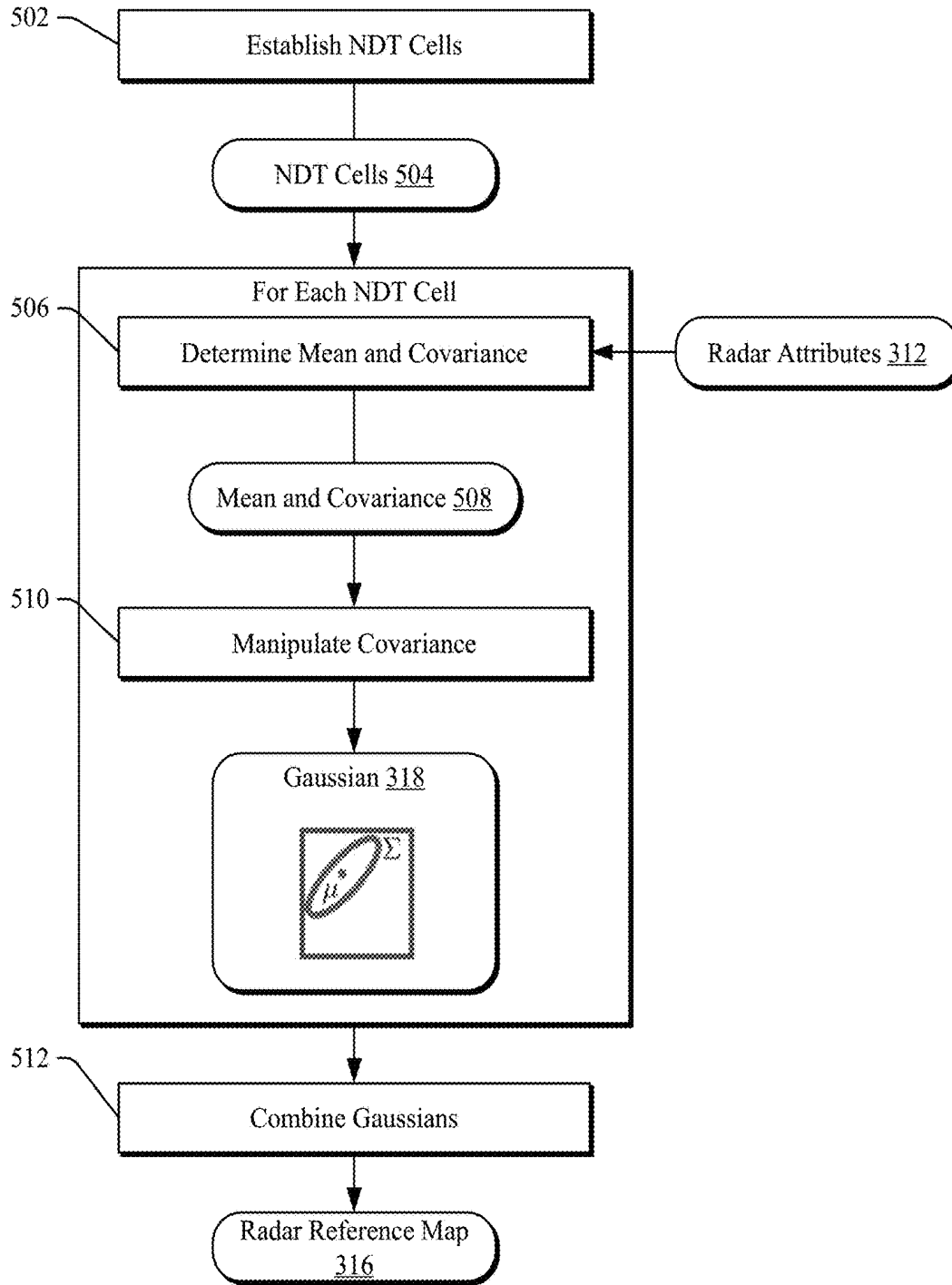


Fig. 5

600

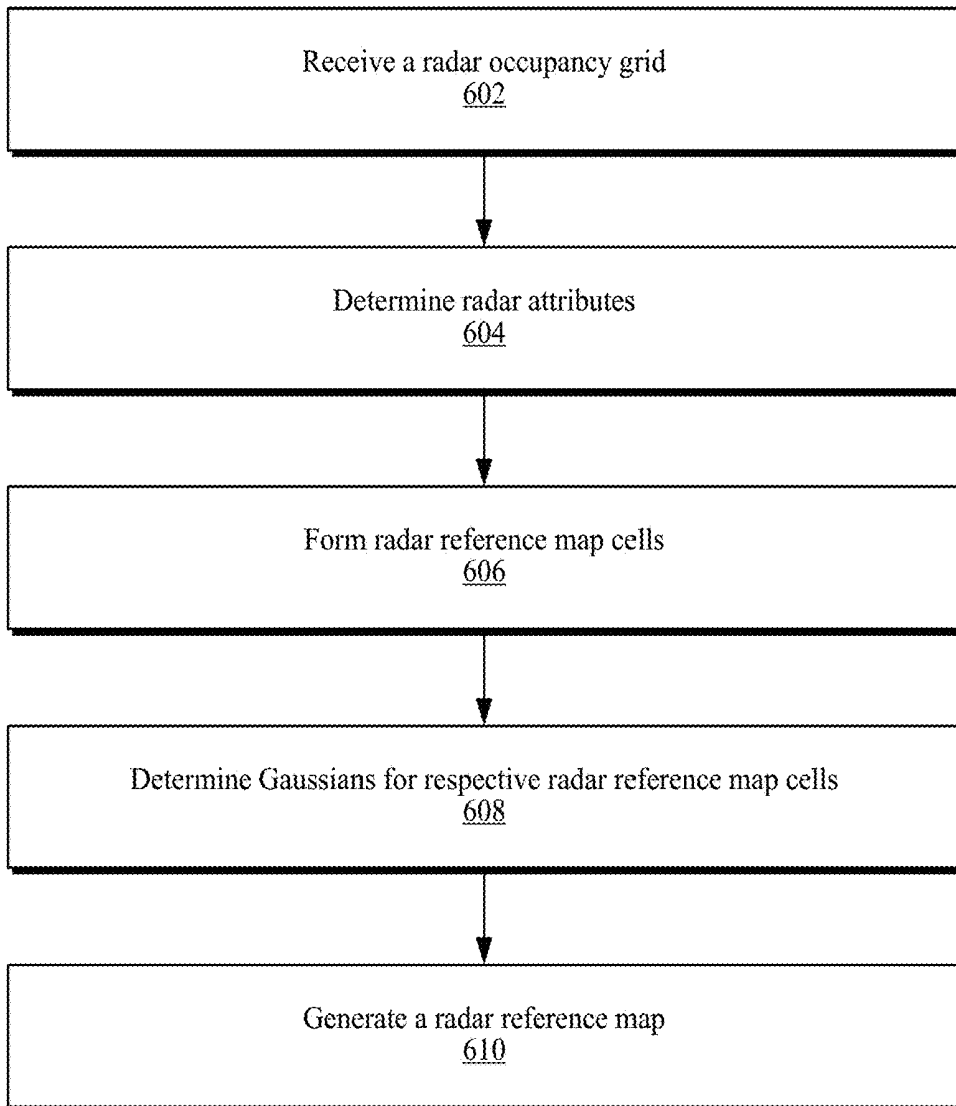


Fig. 6

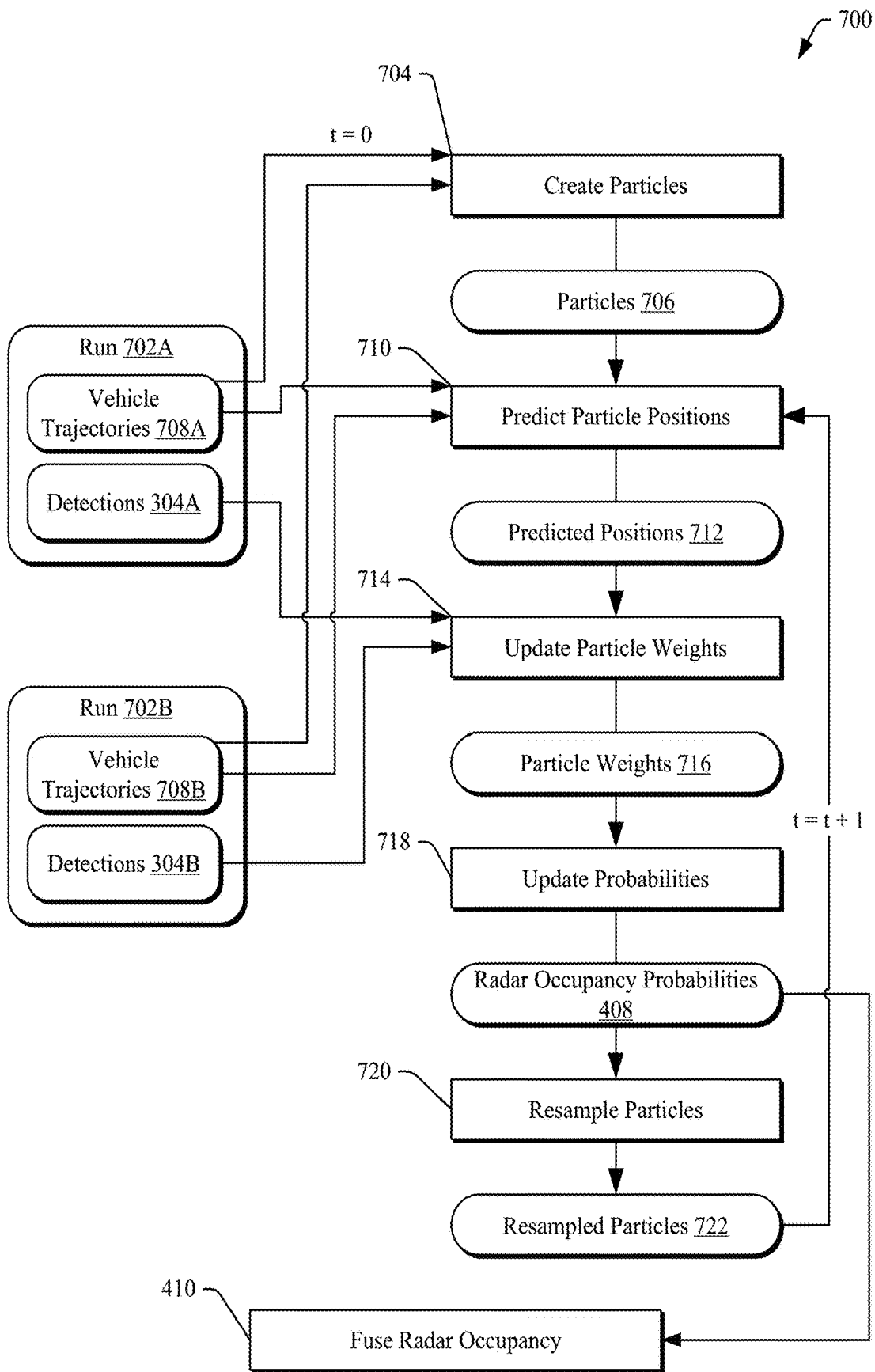


Fig. 7

800

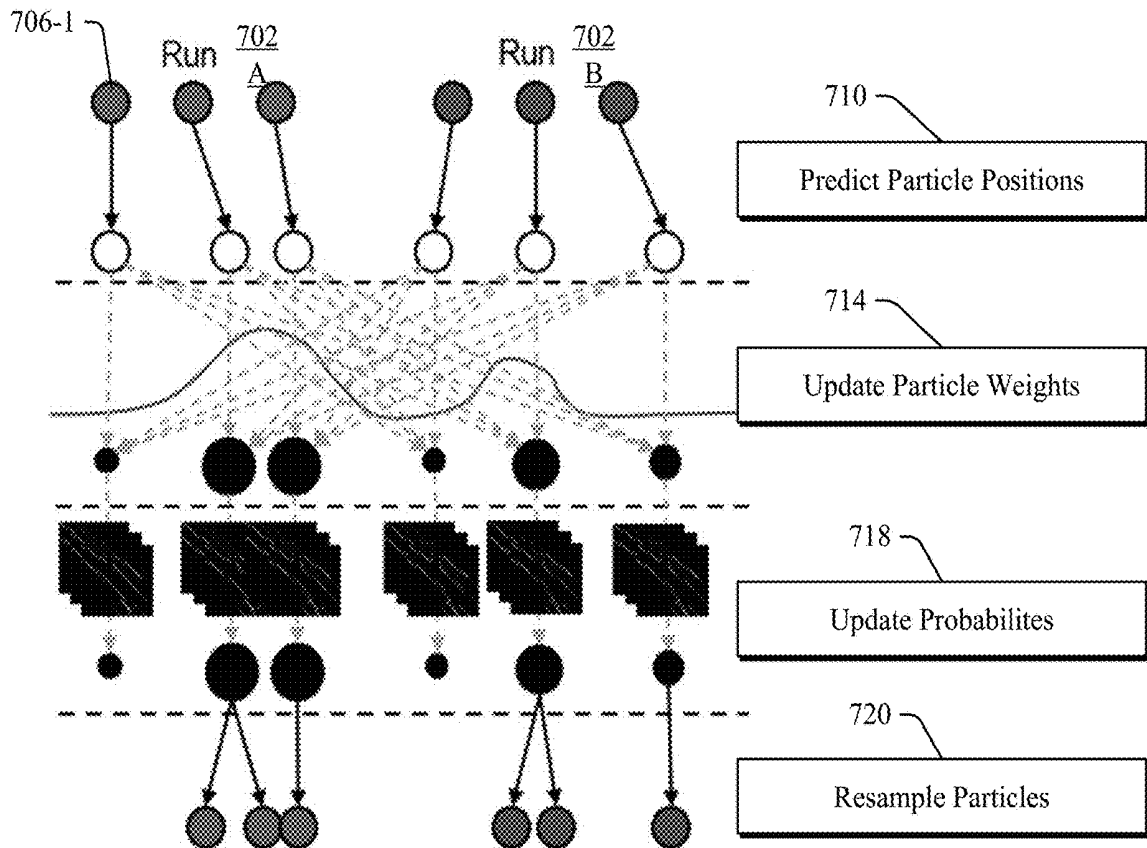


Fig. 8

900

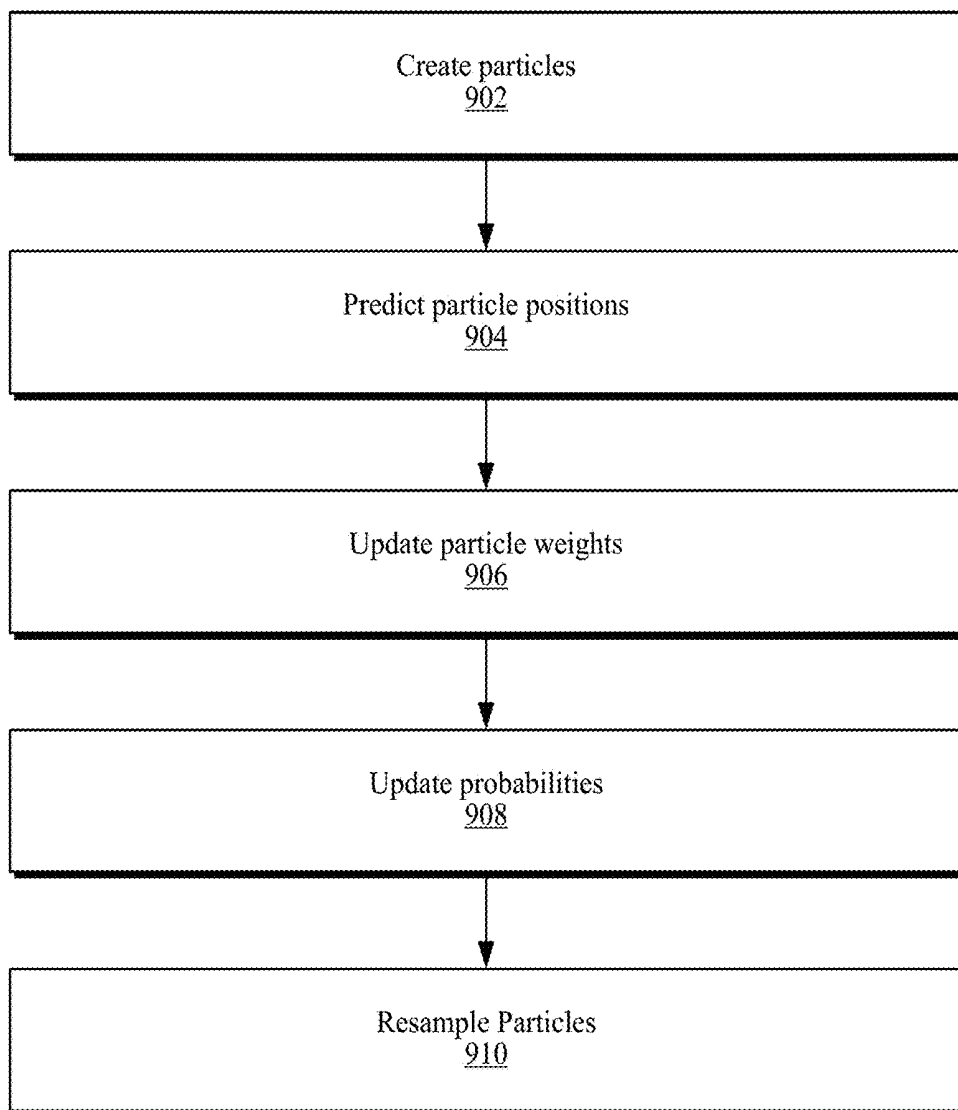


Fig. 9

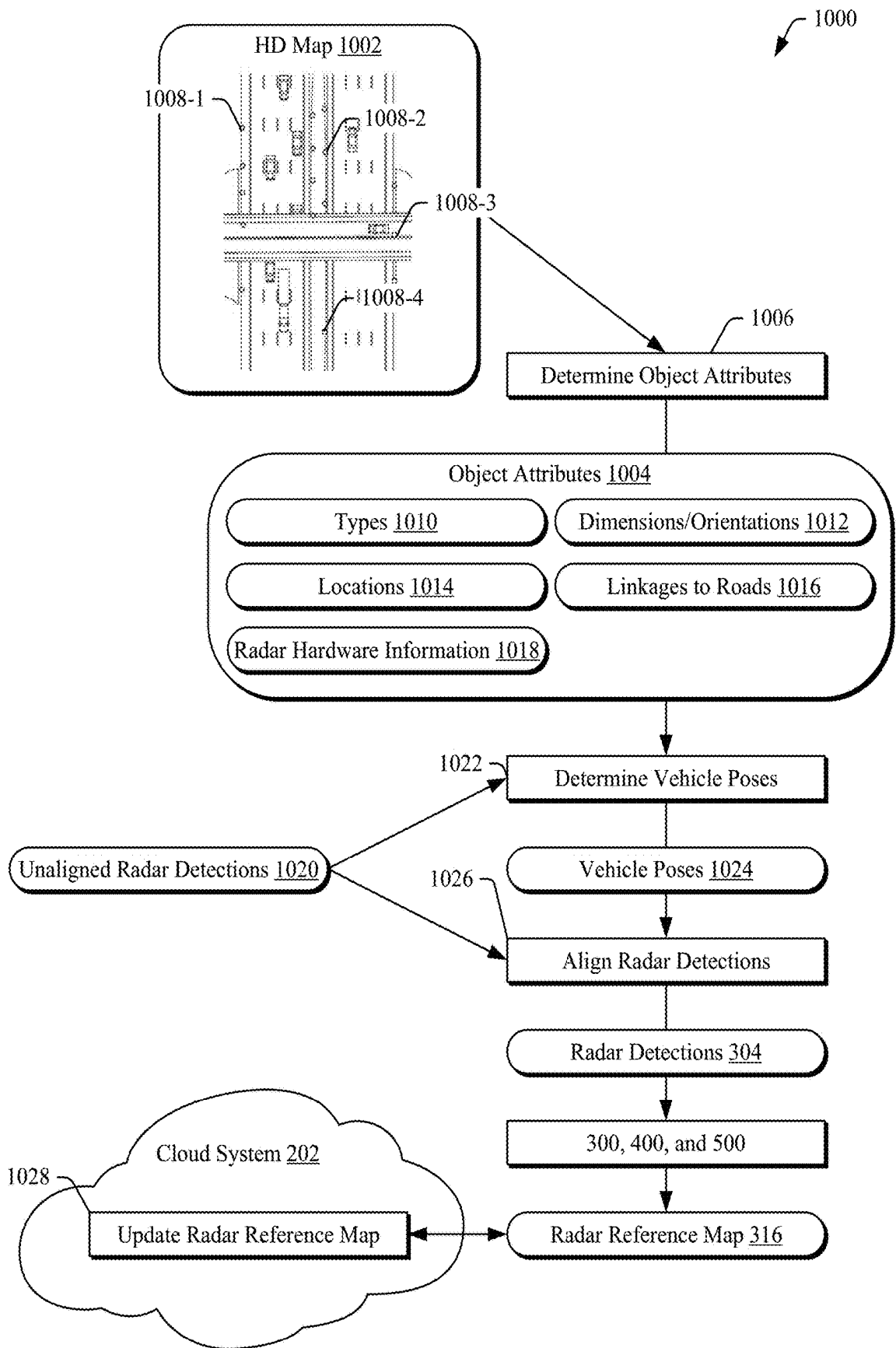


Fig. 10

1100

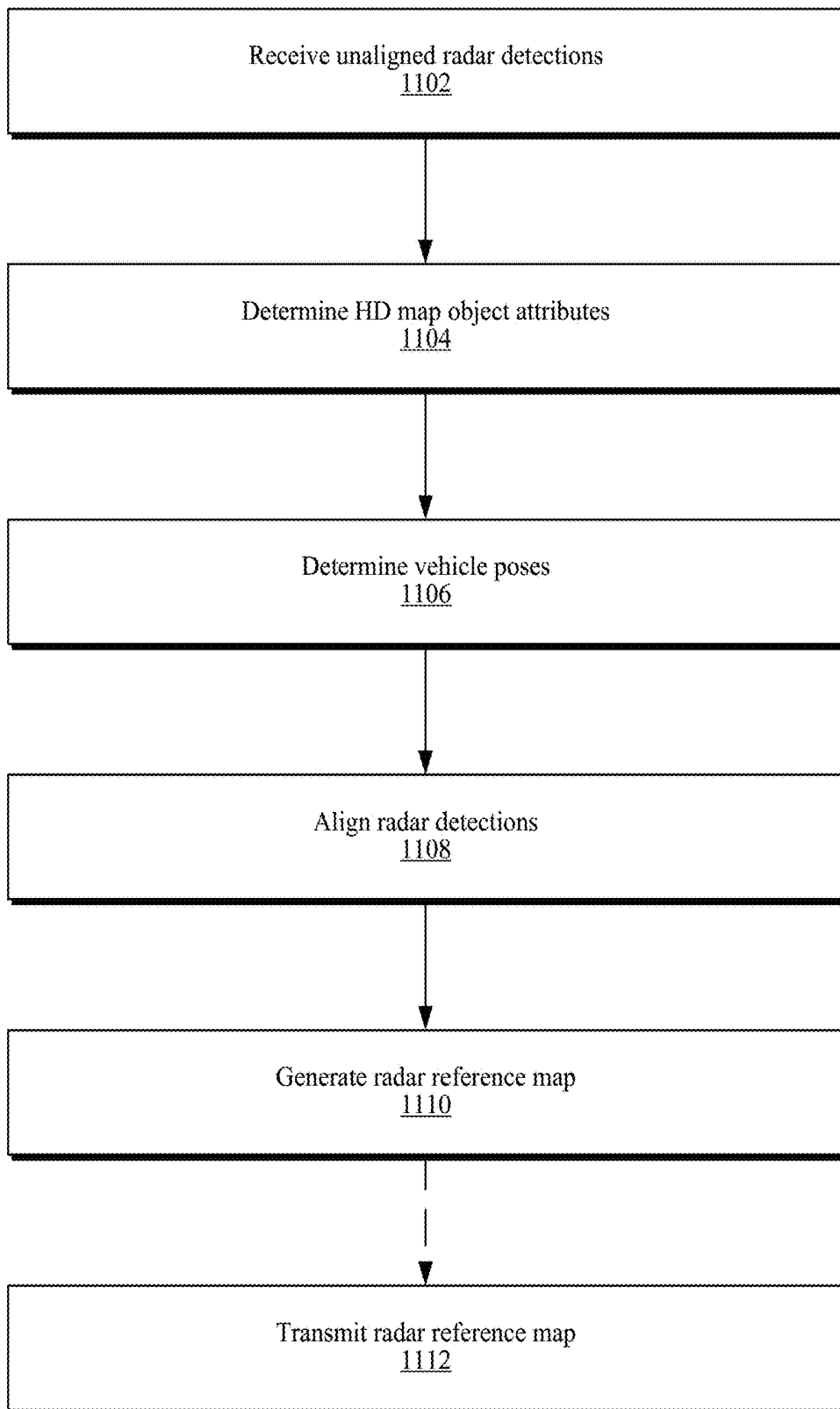


Fig. 11

1200

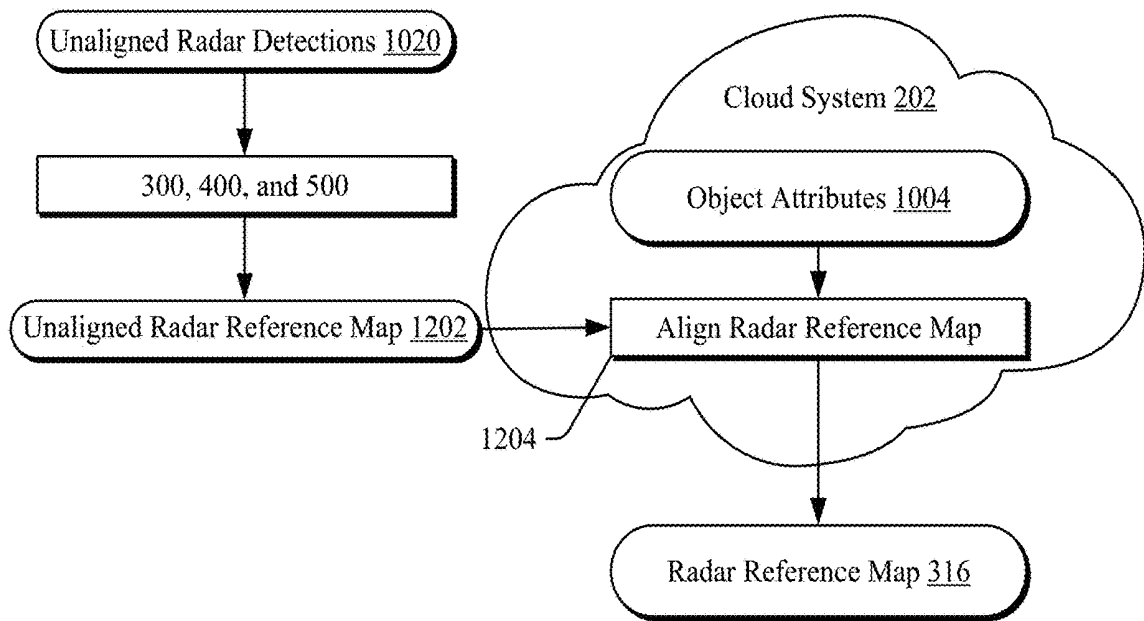


Fig. 12

1300

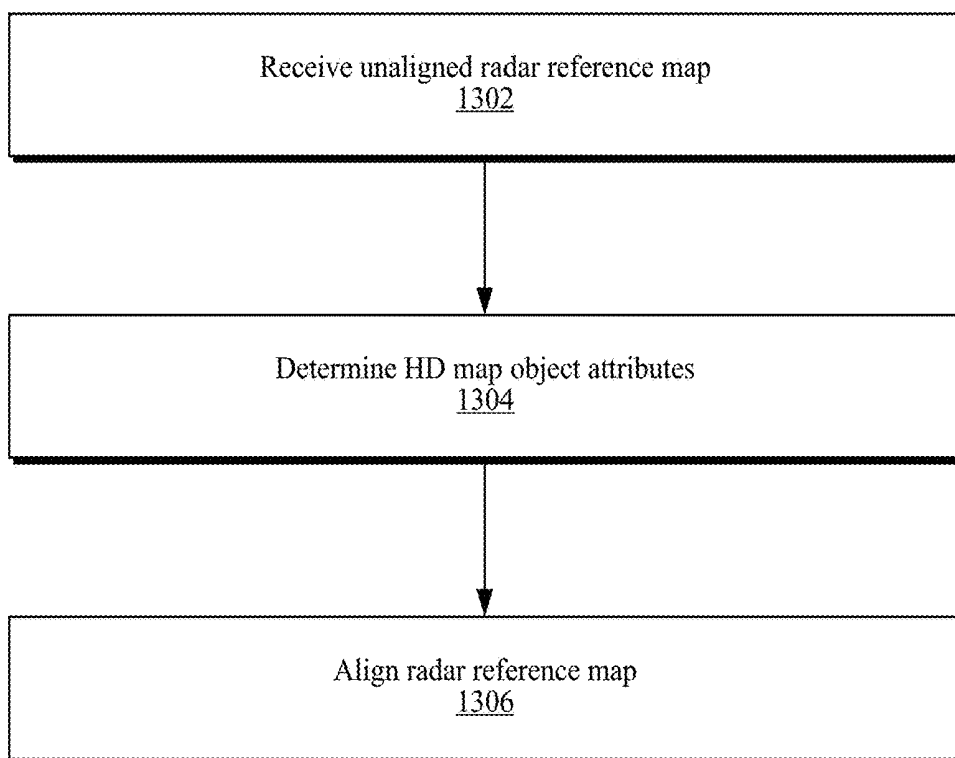


Fig. 13

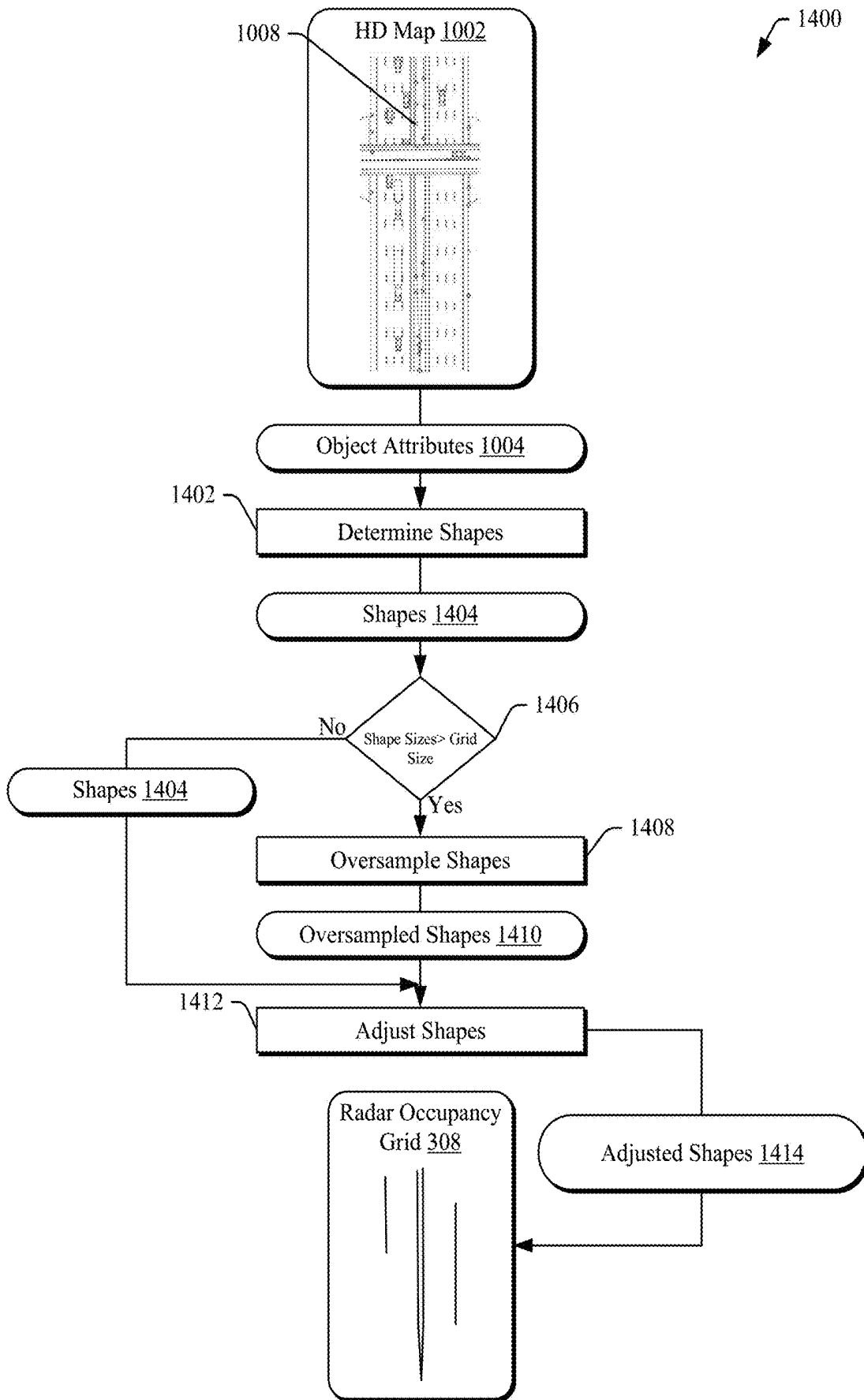


Fig. 14

1500

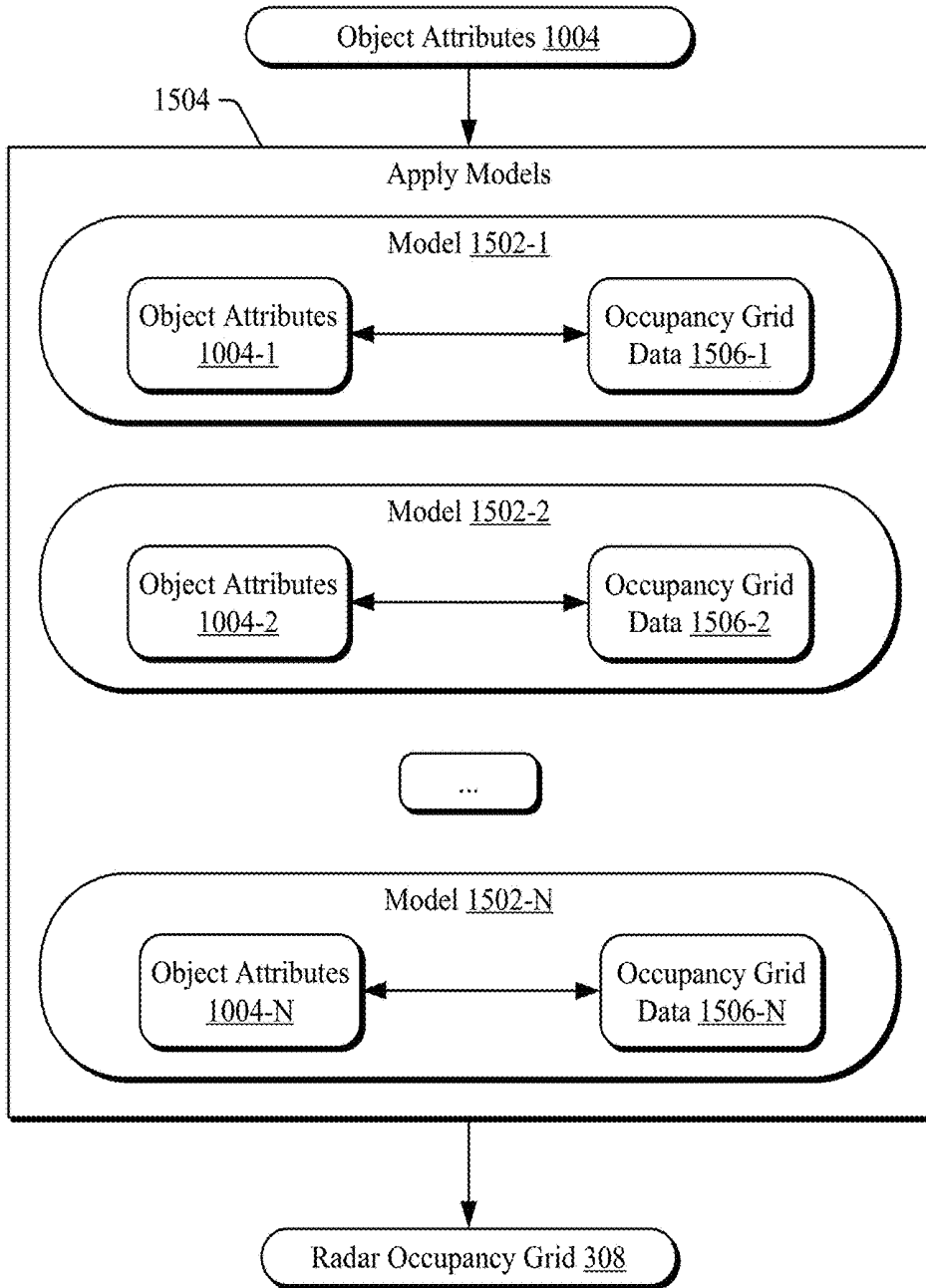


Fig. 15

1600

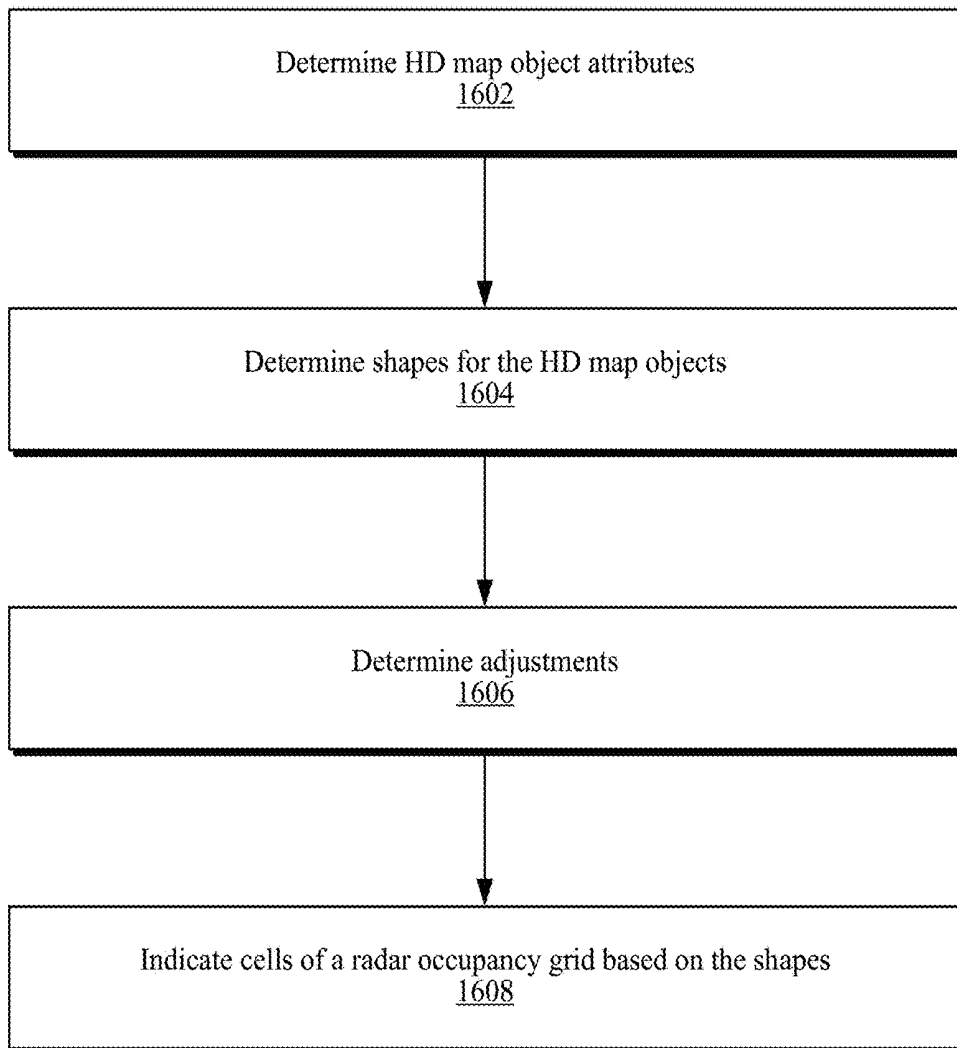


Fig. 16

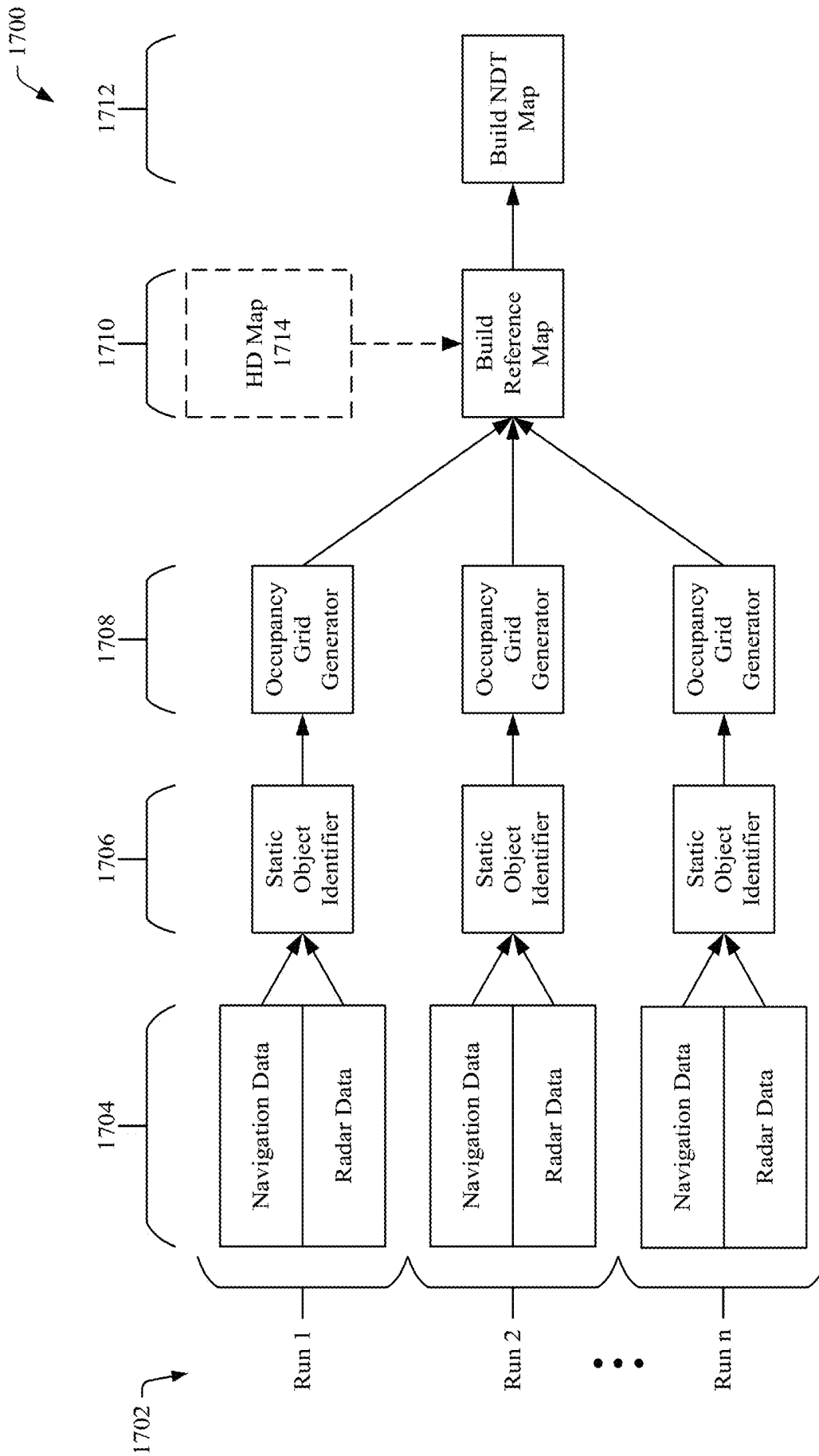


Fig. 17

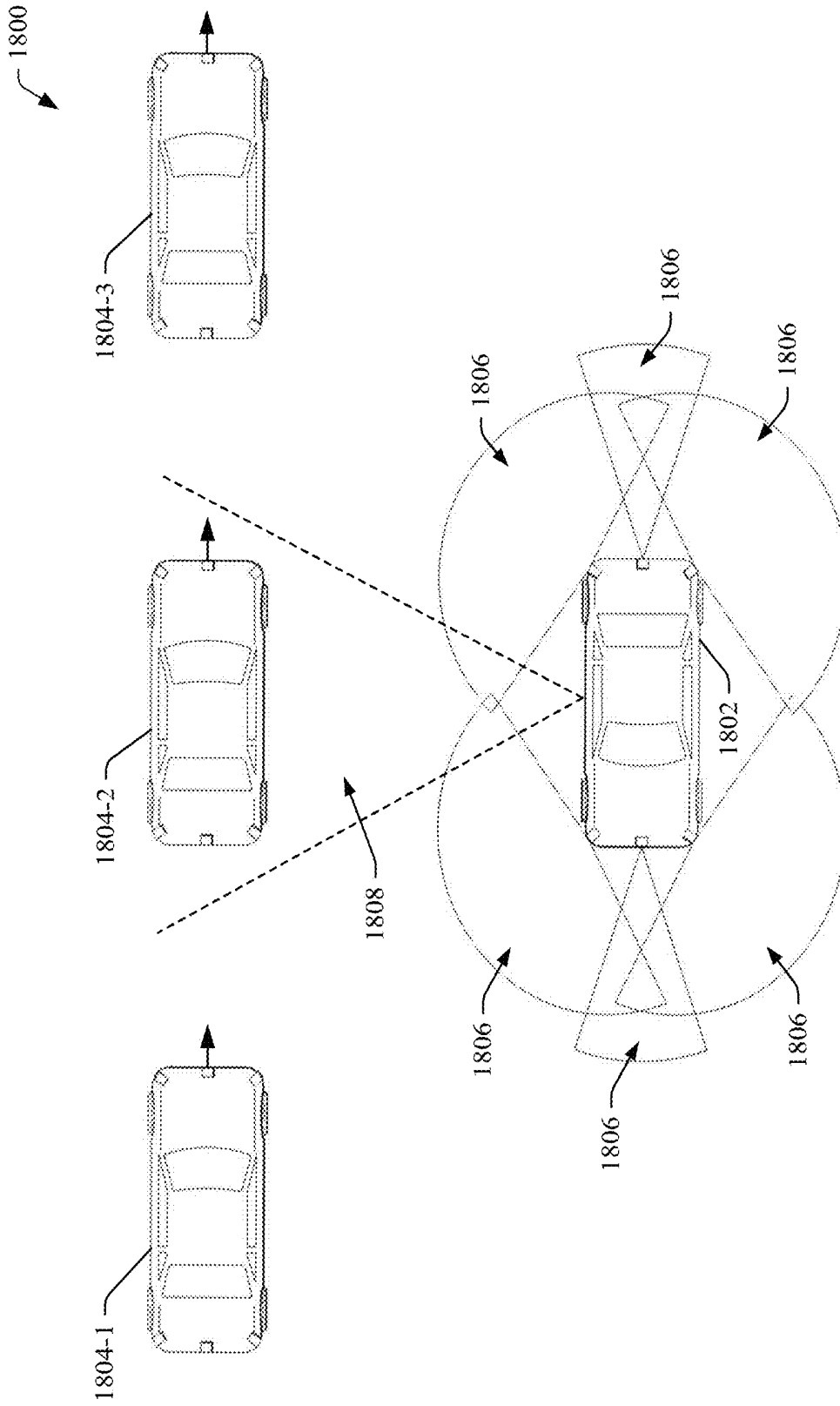


Fig. 18

1900

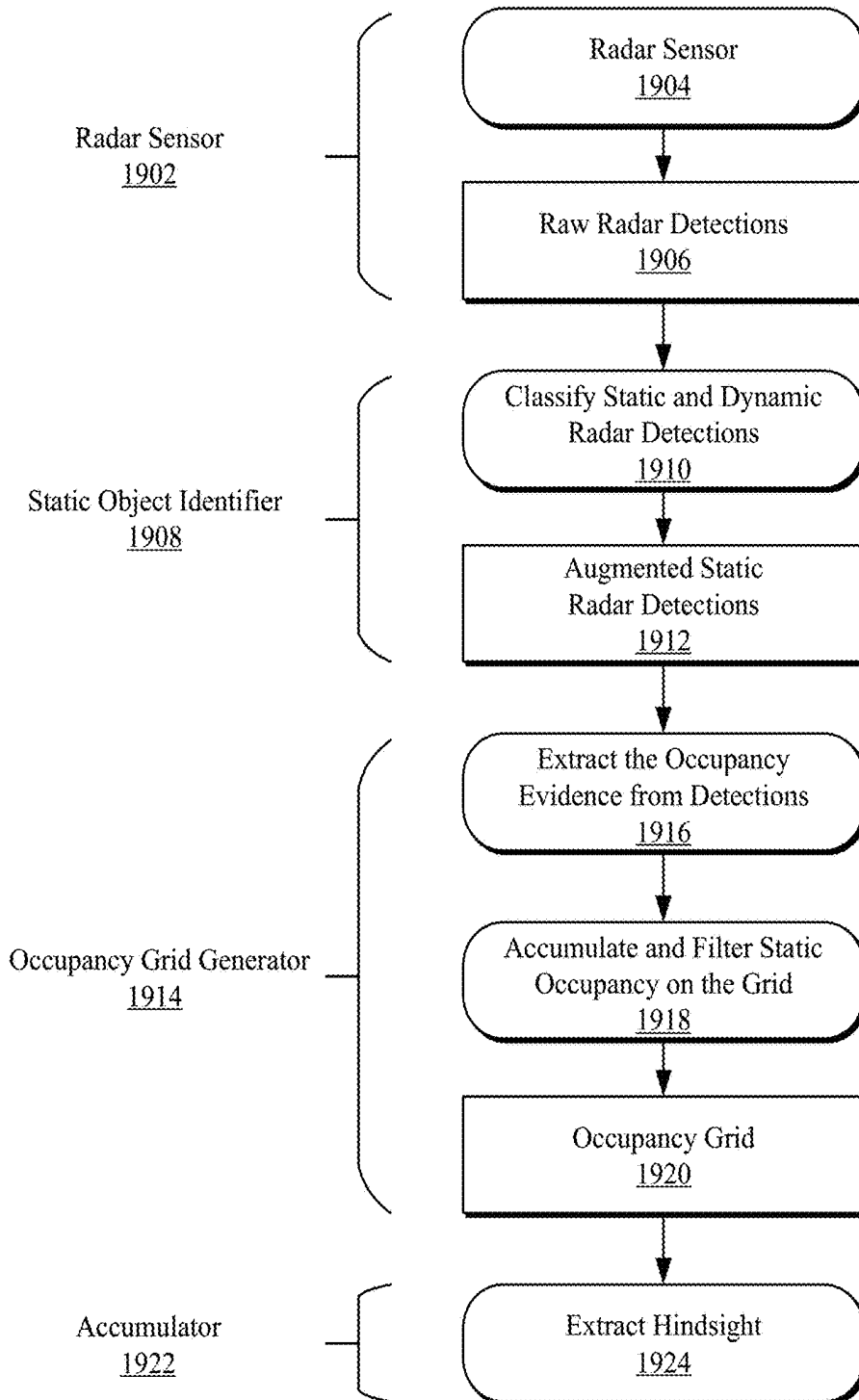


Fig. 19

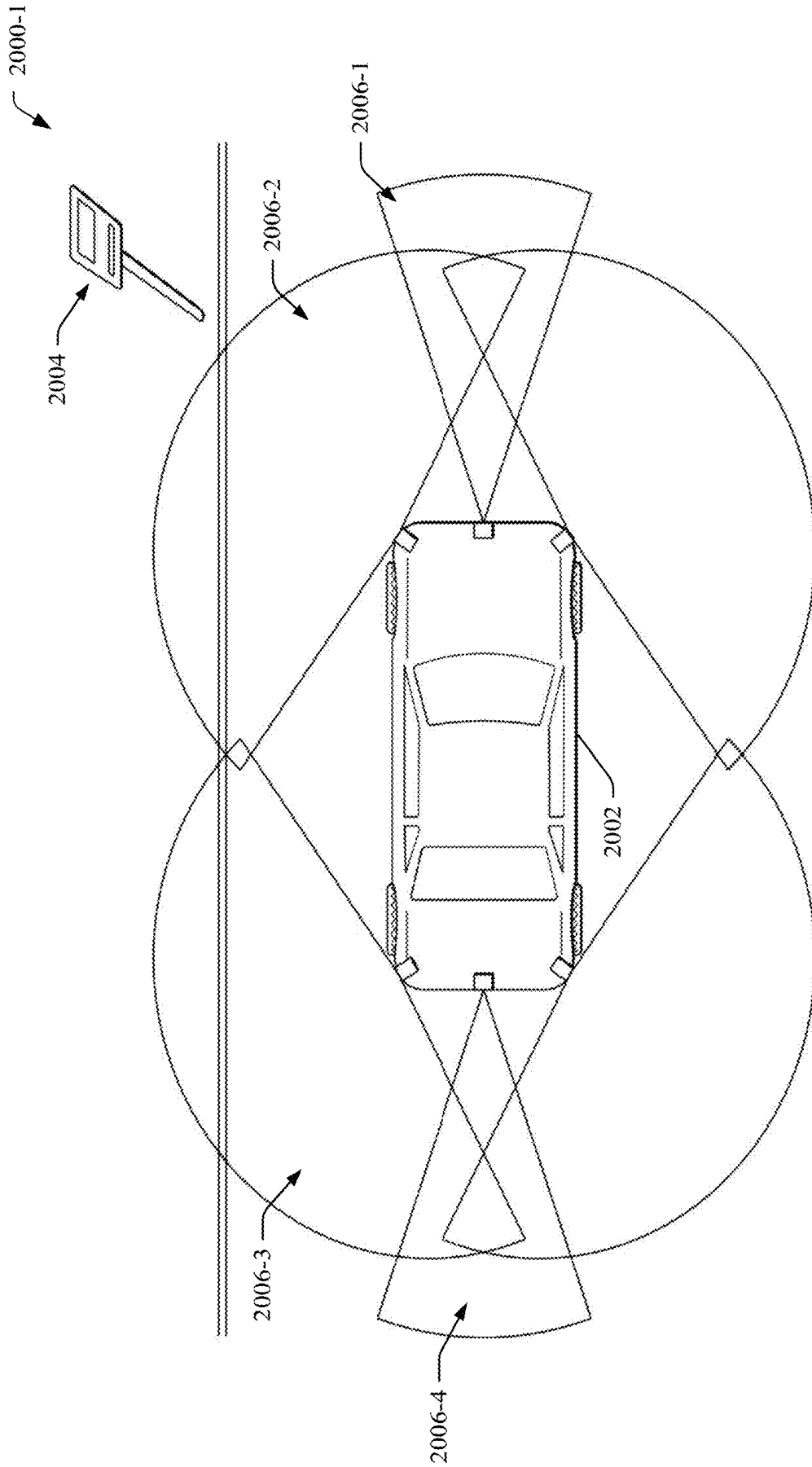


Fig. 20-1

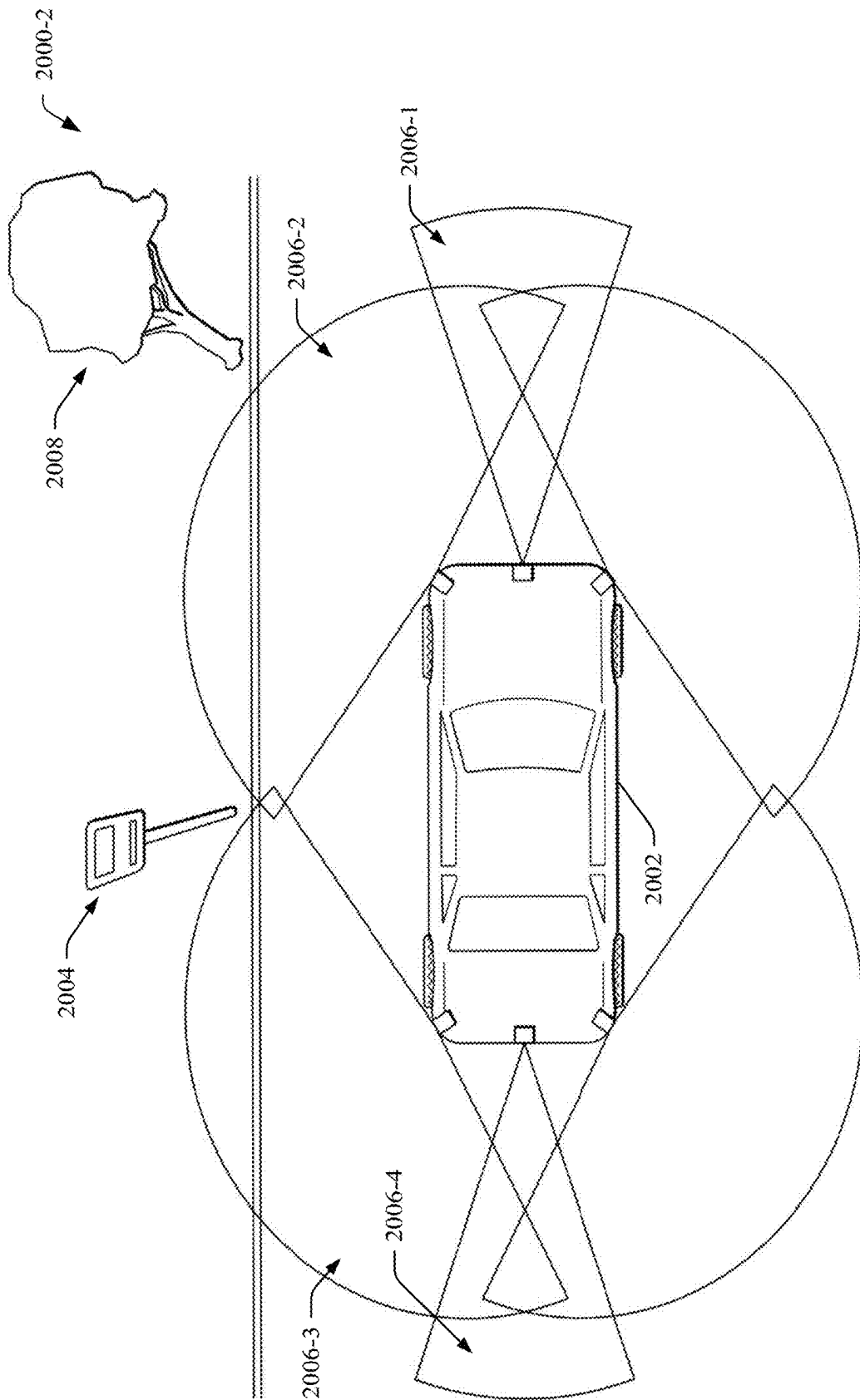


Fig. 20-2

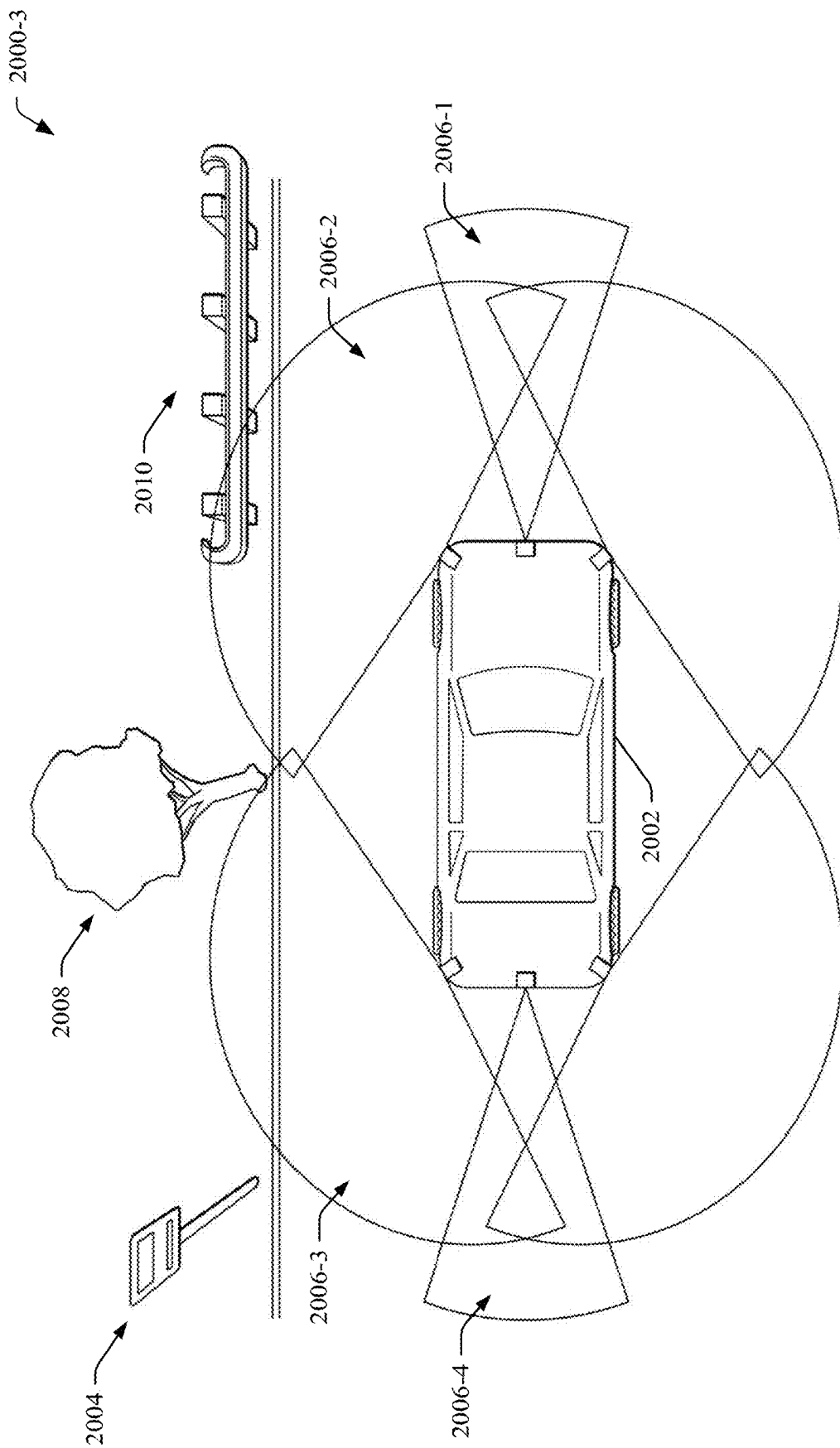


Fig. 20-3

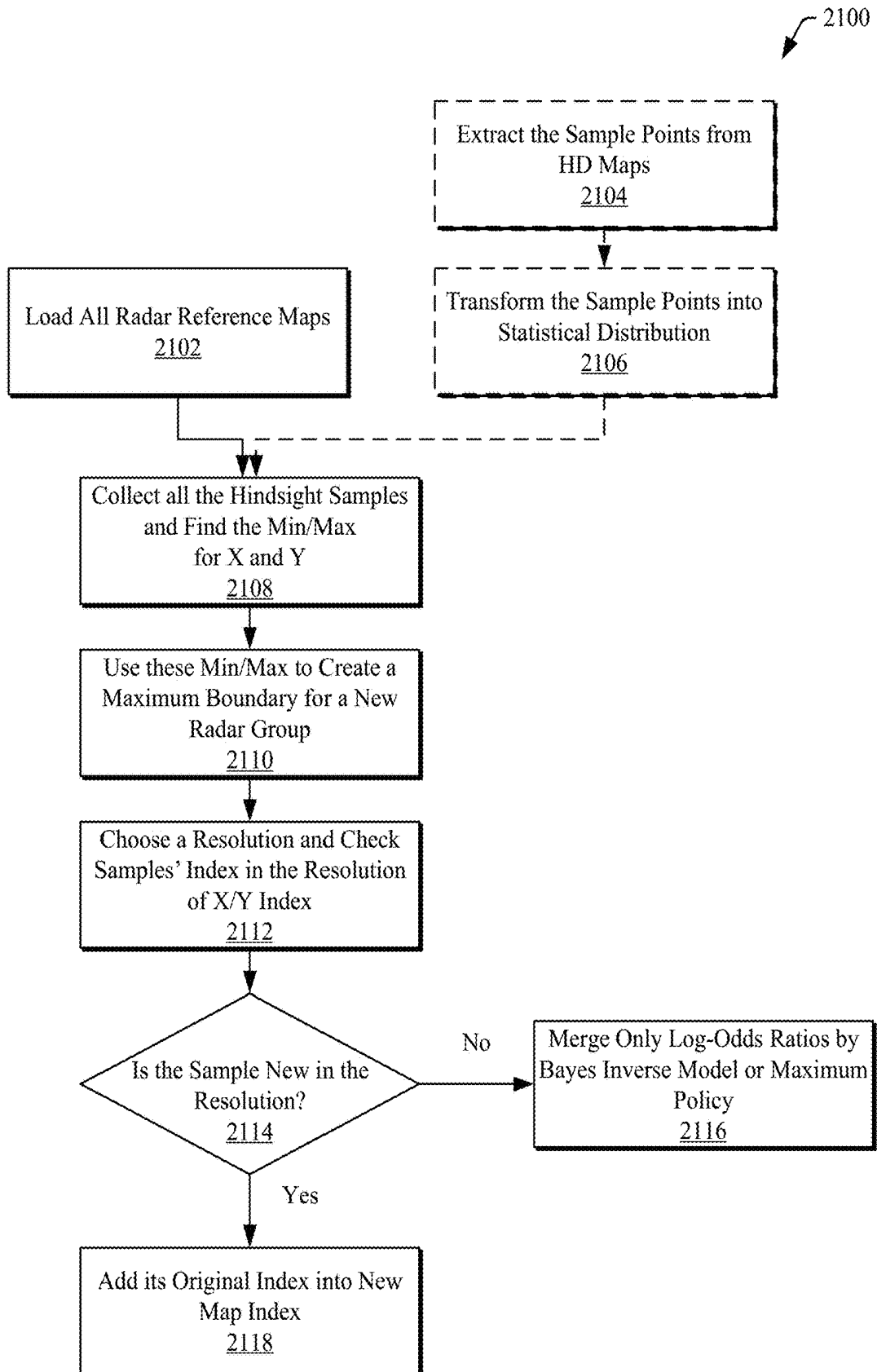


Fig. 21

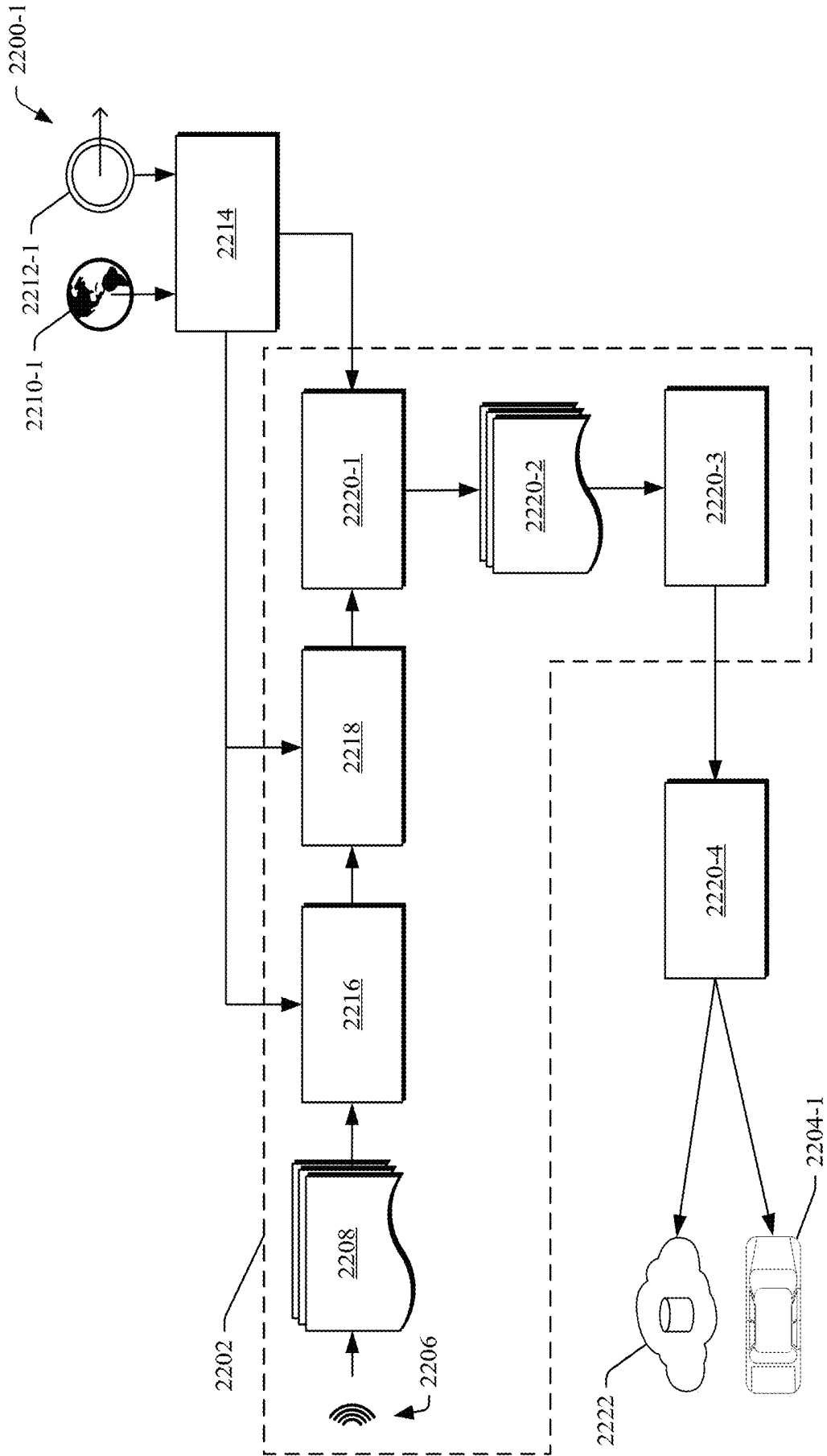


Fig. 22-1

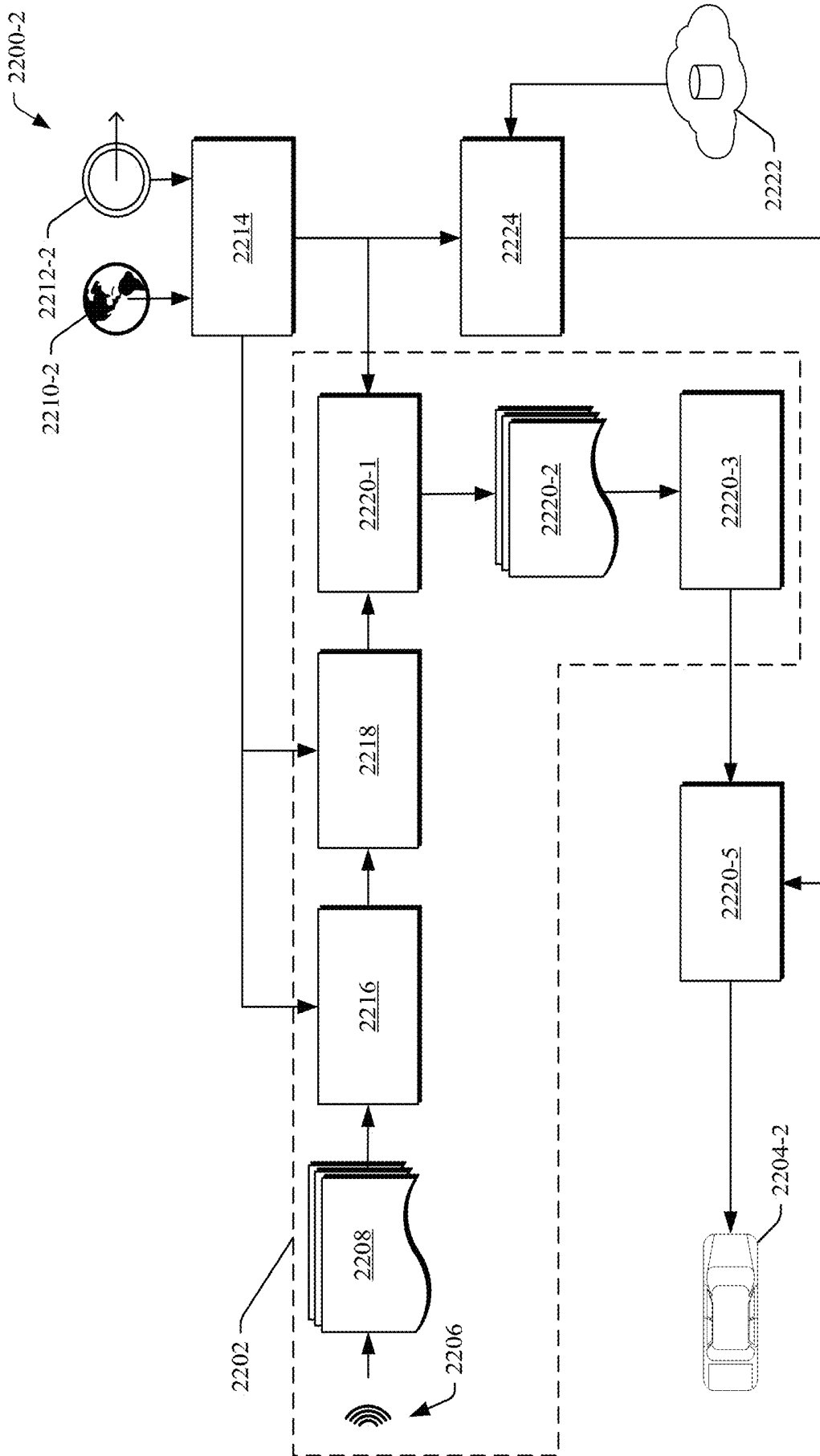


Fig. 22-2

2300

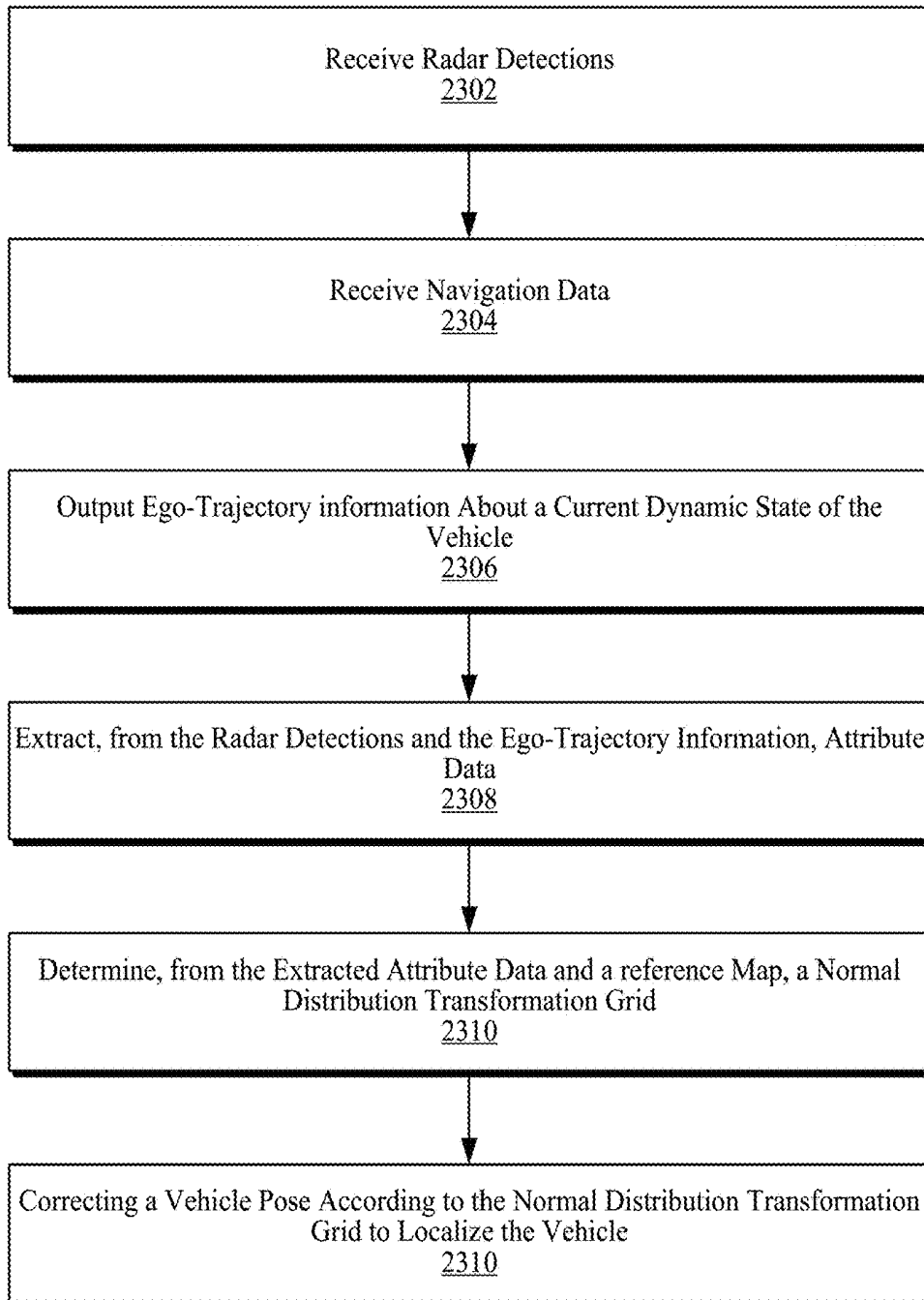


Fig. 23

RADAR REFERENCE MAP GENERATION

CROSS-REFERENCE TO RELATED APPLICATIONS

[0001] This application claims the benefit under 35 U.S.C. 119(e) of U.S. Provisional Application No. 63/146,483, filed Feb. 5, 2021, and U.S. Provisional Application No. 63/127,049, filed Dec. 17, 2020, the disclosures of which are incorporated by reference in their entireties herein.

BACKGROUND

[0002] Radar localization is a technique of using radar reflections to localize a vehicle to a reference map (e.g., determining a location of the vehicle on the map). Radar localization may be used to support autonomous vehicle operations (e.g., navigation, path planning, lane determination and centering, and curve execution without lane markers). In order to accurately position the vehicle relative to its environment, radar localization includes obtaining reflections from stationary localization objects (e.g., road-adjacent objects or spatial statistical patterns) with known locations on the map (e.g., locations in a Universal Transverse Mercator or UTM frame). When an availability of such localization objects is not sufficient (e.g., a poor quality or incomplete radar reference map is used), a driver takeover is often initiated, which may override semi-autonomous or fully autonomous controls. Increased driver takeovers may be less safe, and their frequency can decrease driver satisfaction compared to when a vehicle operates under autonomous control. As such, complete and accurate maps that are easy to generate, update, and use can greatly benefit driver assist or autonomous driving capabilities.

SUMMARY

[0003] Aspects described below include methods for radar reference map generation. The methods include receiving, by a processor, a radar occupancy grid comprising occupancy probabilities for respective occupancy cells of the radar occupancy grid. The methods also include determining radar attributes based on the occupancy probabilities and forming radar reference map cells. The methods further include, for each radar reference map cell that contains a plurality of radar attributes, determining a Gaussian for the radar reference map cell. The Gaussian comprises a mean and covariance of the radar attributes within the radar reference map cell. The methods also include generating a radar reference map comprising the radar reference map cells and the Gaussians determined for the radar reference map cells that contain the plurality of radar attributes.

[0004] Aspects described below also include systems for implementing radar reference map generation. The systems include at least one processor and at least one computer-readable storage medium comprising instructions that, when executed by the processor, cause the systems to receive a radar occupancy grid comprising occupancy probabilities for respective occupancy cells of the radar occupancy grid. The instructions also cause the systems to determine radar attributes based on the occupancy probabilities and form radar reference map cells. The instructions further cause the systems to, for each radar reference map cell that contains a plurality of radar attributes, determine a Gaussian for the radar reference map cell. The Gaussian comprises a mean and covariance of the radar attributes within the radar

reference map cell. The instructions further cause the systems to generate a radar reference map comprising the radar reference map cells and the Gaussians determined for the radar reference map cells that contain the plurality of radar attributes.

BRIEF DESCRIPTION OF THE DRAWINGS

[0005] Systems and techniques enabling radar reference map generation are described with reference to the following drawings. The same numbers are used throughout the drawings to reference like features and components:

[0006] FIG. 1 is an example illustration of an environment in which radar reference map generation may be implemented, in accordance with techniques of this disclosure;

[0007] FIG. 2-1 is an example illustration of systems that may be used to implement radar reference map generation and vehicle localization based on radar detections, in accordance with techniques of this disclosure;

[0008] FIG. 2-2 is an example illustration of a radar-localization module that may be used to implement vehicle localization based on radar detections;

[0009] FIG. 2-3 is another example illustration of a radar-localization module that may be used to implement vehicle localization based on radar detections;

[0010] FIG. 3 is an example illustration of generating a radar reference map, in accordance with techniques of this disclosure;

[0011] FIG. 4 is an example illustration of determining a radar occupancy grid, in accordance with techniques of this disclosure;

[0012] FIG. 5 is an example illustration of generating a radar reference map from radar attributes, in accordance with techniques of this disclosure;

[0013] FIG. 6 is an example illustration of a process of generating a radar reference map, in accordance with techniques of this disclosure;

[0014] FIG. 7 is an example illustration of generating a radar occupancy grid based on multiple vehicle-runs with low-accuracy location data, in accordance with techniques of this disclosure;

[0015] FIG. 8 is another example illustration of generating a radar occupancy grid based on multiple vehicle-runs with low-accuracy location data, in accordance with techniques of this disclosure;

[0016] FIG. 9 is an example illustration of a process of generating a radar occupancy grid based on multiple vehicle-runs with low-accuracy location data, in accordance with techniques of this disclosure;

[0017] FIG. 10 is an example illustration of generating a radar reference map using low-accuracy location data and a high-definition (HD) map, in accordance with techniques of this disclosure;

[0018] FIG. 11 is an example illustration of a process of generating a radar reference map using low-accuracy location data and an HD map, in accordance with techniques of this disclosure;

[0019] FIG. 12 is another example illustration of generating a radar reference map using low-accuracy location data and an HD map, in accordance with techniques of this disclosure;

[0020] FIG. 13 is another example illustration of a process of generating a radar reference map using low-accuracy location data and an HD map, in accordance with techniques of this disclosure;

[0021] FIG. 14 is an example illustration of determining a radar occupancy grid using an HD map, in accordance with techniques of this disclosure;

[0022] FIG. 15 is another example illustration of determining a radar occupancy grid using an HD map, in accordance with techniques of this disclosure;

[0023] FIG. 16 is an example illustration of a process of determining a radar occupancy grid using an HD map, in accordance with techniques of this disclosure;

[0024] FIG. 17 illustrates a flow chart as an example process for updating, through multiple iterations, a radar reference map used for vehicle localization based on radar detections, in accordance with techniques of this disclosure;

[0025] FIG. 18 illustrates an example implementation 1800 of a system configured to update, through multiple iterations, a radar reference map used for vehicle localization based on radar detections, in accordance with techniques of this disclosure;

[0026] FIG. 19 illustrates a pipeline for updating, through multiple iterations, a radar reference map used for vehicle localization based on radar detections, in accordance with techniques of this disclosure;

[0027] FIGS. 20-1 to 20-3 illustrate an example implementation of hindsight used to update, through multiple iterations, a radar reference map used for vehicle localization based on radar detections, in accordance with techniques of this disclosure;

[0028] FIG. 21 illustrates an example process for determining a hindsight maximum boundary for radar coordinates when updating, through multiple iterations, a radar reference map used for vehicle localization based on radar detections, in accordance with techniques of this disclosure;

[0029] FIGS. 22-1 to 22-2 illustrate a flow chart of an example of a process for vehicle localization based on radar detections, in accordance with techniques of this disclosure; and

[0030] FIG. 23 illustrates a flow chart of an example process for vehicle localization based on radar detections.

DETAILED DESCRIPTION

Overview

[0031] Radar localization is a technique of using radar reflections to localize a vehicle relative to other objects (e.g., other vehicles, objects, or pedestrians). One application of radar localization is localizing a vehicle to a map, similar to geospatial positioning systems (e.g., GPS, GNSS, GLONASS). Just as those positioning systems require adequate signal reception, radar localization requires radar reflections from radar-localization objects with known locations. The locations of those objects are generally comprised by a radar-reference map.

[0032] Methods and systems are described that enable radar reference map generation. By utilizing the techniques described herein, robust and wide-spanning radar reference maps may be generated, often times without dedicated or expensive sensor modules. For example, a radar occupancy grid is received, and radar attributes are determined from occupancy probabilities within the radar occupancy grid. Radar reference map cells are formed, and the radar attributes are used to determine Gaussians for the radar reference map cells that contain a plurality of the radar attributes. A radar reference map is then generated that includes the Gaussians determined for the radar referenced map cells that

contain the plurality of radar attributes. By doing so, the generated radar reference map is accurate while being spatially efficient. This improved localization capability may improve driving when used by a controller to operate the vehicle with greater safety and comfort. With improved localization, the vehicle does not hesitate and can maneuver in an environment with greater degrees of accuracy, which may put passengers at ease when the vehicle drives under automated or semi-automated control.

Example Environment

[0033] FIG. 1 is an example illustration 100 of an environment in which radar reference maps may be generated, updated, or used. In the example illustration 100, a system 102 is disposed in a vehicle 104 (e.g., a host vehicle or “ego-vehicle”) that is traveling along a roadway 106.

[0034] The system 102 utilizes a radar system (not shown) to transmit radar signals (not shown). The radar system receives radar reflections 108 of the radar signals from objects 110. In example illustration 100, the radar reflection 108-1 corresponds to object 110-1 (e.g., a sign), the radar reflection 108-2 corresponds to object 110-2 (e.g., a building), and the radar reflection 108-3 corresponds to object 110-3 (e.g., a guardrail).

[0035] The radar reflections 108 may be used to generate a radar reference map, as discussed in reference to FIGS. 3-13. The radar reflections 108 may also be used to update an existing radar reference map, as discussed in reference to FIGS. 17-21. The radar reflections 108 may further be used in conjunction with an existing radar reference map to radar-localize the vehicle 104, as discussed in reference to FIGS. 22 and 23.

Example Systems

[0036] FIG. 2-1 is an example illustration 200-1 of systems that may be used to generate, update, or use radar reference maps. The example illustration 200-1 comprises the system 102 of the vehicle 104 and a cloud system 202. Although the vehicle 104 is illustrated as a car, the vehicle 104 may comprise any vehicle (e.g., a truck, a bus, a boat, a plane, etc.) without departing from the scope of this disclosure. The system 102 and the cloud system 202 may be connected via communication link 204. One or both of the system 102 and the cloud system 202 may be used to perform the techniques described herein.

[0037] As shown underneath the respective systems, the systems include at least one processor 206 each (e.g., processor 206-1 and processor 206-2), at least one computer-readable storage medium 208 each (e.g., computer-readable storage medium 208-1 and 208-2), radar-localization modules 210 (e.g., radar-localization module 210-1 and 210-2), and communication systems 212 (e.g., communication system 212-1 and 212-2). The communication systems 212 facilitate the communication link 204.

[0038] The system 102 additionally contains a navigation system 214 and a radar system 216. The navigation system 214 may include a geospatial positioning system (e.g., a GPS, GNSS, or GLONASS sensor), an inertial measurement system (e.g., a gyroscope or accelerometer), or other sensors (e.g., a magnetometer, software positioning engine, wheel tick sensor, lidar odometer, vision odometer, radar odometer, or other sensor odometer). The navigation system 214 may provide high-accuracy location data (e.g., to within a meter)

or low-accuracy location data (e.g., to within a couple of meters). The radar system 216 is indicative of a radar hardware used to transmit and receive radar signals (e.g., radar reflections 108). In some implementations, the radar system 216 provides static detections to the radar-localization modules 210 (e.g., filtering may be performed within the radar system 216).

[0039] The processors 206 (e.g., application processors, microprocessors, digital-signal processors (DSP), or controllers) execute instructions 218 (e.g., instructions 218-1 and 218-2) stored within the computer-readable storage media 208 (e.g., non-transitory storage devices such as hard drives, SSD, flash memories, read-only memories (ROM), EPROM, or EEPROM) to cause the system 102 and cloud system 202 to perform the techniques described herein. The instructions 218 may be part of operating systems and/or one or more applications of the system 102 and cloud system 202.

[0040] The instructions 218 cause the system 102 and the cloud system 202 to act upon (e.g., create, receive, modify, delete, transmit, or display) data 220 (e.g., 220-1 and 220-2). The data 220 may comprise application data, module data, sensor data, or I/O data. Although shown as being within the computer-readable storage media 208, portions of the data 220 may be within random-access memories (RAM) or caches of the system 102 and the cloud system 202 (not shown). Furthermore, the instructions 218 and/or the data 220 may be remote to the system 102 and the cloud system 202.

[0041] The radar-localization modules 210 (or portions thereof) may be comprised by the computer-readable storage media 208 or be stand-alone components (e.g., executed in dedicated hardware in communication with the processors 206 and computer-readable storage media 208). For example, the instructions 218 may cause the processors 206 to implement or otherwise cause the system 102 or the cloud system 202 to implement the techniques described herein.

[0042] FIG. 2-2 is an example illustration 200-2 of the radar-localization module 210 that may be used to implement vehicle localization based on radar detections. In the example illustration 200-2, the radar-localization module 210 is configured to be in a reference mode. The reference mode is used when the radar-localization module 210 is being used to build a radar reference map. The radar-localization module 210 includes two sub-modules, a vehicle state estimator 222, a scan-matcher 224, and two optional sub-modules, a static object identifier 226, and an occupancy grid generator 228. One or both of the static object identifier 226 and the occupancy grid generator 228 may or may not be present.

[0043] The vehicle state estimator 222 receives navigation data 230 from navigation systems (e.g., the navigation system 214 from FIG. 2-1). Generally, in the reference mode, the navigation data 230 may be sourced from a high-quality navigation system that provides a higher degree of accuracy than commercial or consumer-grade navigation systems (e.g., navigation systems used for mass production). From the navigation data 230, the vehicle state estimator 222 determines ego-trajectory information about the current dynamic state (e.g., speed, yaw rate) of the vehicle 104 and may provide the state estimates and other navigation data 230 (e.g., latitude and longitude of the vehicle 104) to any of the other sub-modules that are present in the radar-localization module 210. Ego-trajectory information

includes information, originating from systems of a vehicle, that may be used to project the direction and velocity of the vehicle.

[0044] The static object identifier 226 receives radar detections 232 from one or more radar sensors positions around the vehicle 104. If the static object identifier 226 is not being utilized, then the radar detections 232 may be received by the occupancy grid generator 228, the scan-matcher 224, or another sub-module designed to accept the radar detections 232 and distribute the radar data to other modules and sub-modules of the vehicle system. The static object identifier 226 determines whether a radar detection 232 is a static detection based on the ego-trajectory information from the vehicle state estimator 222 and outputs any identified static detections to either the occupancy grid generator 228, if it is being utilized, or the scan-matcher 224.

[0045] The occupancy grid generator 228 may receive, as inputs, either the radar detections 232, if the static object identifier 226 is not being utilized by the radar-localization module 210, or the static radar detections output by the static object identifier 226, as well as, the ego-trajectory information and the navigation data 230 output from the vehicle state estimator 222. The occupancy grid generator 228 uses the inputs to determine a statistical probability (e.g., occupancy grid) of the occupancy at any given location in the environment of the vehicle 104, as discussed in other sections of this document.

[0046] The scan-matcher 224 may receive, as input, the ego-trajectory information and attribute data. Attribute data may be either the radar detections 232, the static radar detections from the static object identifier 226, or the occupancy grid that is output by the occupancy grid generator 228, depending on which optional sub-modules are being utilized. As described in other sections of this document, the scan-matcher 224 finds an optimal normal distribution transformation (NDT) between the attribute data and the high-quality navigation data 230 and outputs an NDT radar reference map 234.

[0047] FIG. 2-3 is another example illustration 200-3 of a radar-localization module that may be used to implement vehicle localization based on radar detections. In the example illustration 200-3, the radar-localization module 210 is configured to be in a real-time localization mode. The primary differences between the real-time localization mode and the reference mode of the radar-localization module 210 include the navigation data 230 originating from a lower-quality navigation system and an extra input to the scan-matcher module 224. The output of the radar-localization module 210 in real-time localization mode is an updated vehicle pose 236 of the vehicle 104.

[0048] In real-time localization mode, the scan-matcher 224 receives the NDT radar reference map 234 as input, in addition to the attribute data and the ego-trajectory information. The inputs are used by the scan-matcher to determine an NDT grid. The NDT grid is compared to the NDT radar reference map to determine the updated vehicle pose 236.

[0049] In one non-limiting example, the radar-localization module 210 may be used in the reference mode in the vehicle 104, equipped with a high-quality GNSS system, that is specially configured to create or assist in the creation of NDT radar reference maps. The real-time localization mode may be considered a normal operating mode of the radar-localization module 210; that is, vehicles not specially

configured to create the NDT radar reference maps may normally operate with the radar-localization module 210 in the real-time localization mode.

Building a Radar Reference Map

[0050] FIG. 3 is an example illustration 300 of generating a radar reference map from radar detections. Example illustration 300 may be performed by the system 102 and/or the cloud system 202. At 302, radar detections 304 are received. The radar detections 304 comprise stationary radar detections (e.g., detections of stationary objects from radar system 216) with corresponding global coordinates for respective times/locations (e.g., from navigation system 214). The detections may be of objects such as signs, poles, barriers, landmarks, buildings, overpasses, curbs, or road-adjacent objects such as fences, trees, flora, or foliage, or of spatial statistical patterns. The global coordinates may comprise high-accuracy location data (e.g., when the navigation system 214 is a high-accuracy navigation system). The radar detections 304 may comprise point clouds, have corresponding uncertainties, and/or include various radar data or sensor measurements.

[0051] At 306, a radar occupancy grid 308 is determined from the radar detections 302. The radar occupancy grid 308 is a grid-based representation of an environment. For example, the radar occupancy grid 308 may be a Bayesian, Dempster-Shafer, or other type of occupancy grid. Each cell of the radar occupancy grid 308 represents an independent portion of space, and each cell value of the radar occupancy grid 308 represents a probability (e.g., 0-100%) that the corresponding portion of space is occupied. A probability of around 0% for a cell may indicate that the corresponding portion of space is free, while a probability closer to 100% may indicate that the corresponding portion of space is occupied, and therefore, not free space. Techniques of determining the radar occupancy grid 308 are discussed further in regard to FIGS. 4, 7-9, and 14-17.

[0052] At 310, radar attributes 312 (e.g., attributes or attribute data) are determined from the radar occupancy grid 308. The radar attributes 312 may be center coordinates of respective groups of cells of the radar occupancy grid 308 with probabilities greater than a threshold. In some implementations, the radar attributes 312 may be based on other aspects such as radar cross sections (RCS), amplitudes of the radar detections 304, information from other sensors, or machine learning, separately or in combination with the probabilities. Regardless of how they are determined, the radar attributes 312 comprise clusters, contours, or bounding boxes of the cells of the radar occupancy grid 308. The radar attributes 312 may have weights based on one or more of probabilities, classifications, or cross-section values of the respective radar attributes 312. The radar attributes 312 may be determined using binarization, a clustering algorithm, or machine learning on the radar occupancy grid 308. The determination of the radar attributes 312 generally groups cells of the radar occupancy grid 308 while removing noise.

[0053] At 314, a radar reference map 316 is generated from the radar attributes 312. The radar reference map 316 may be a statistical reference map (e.g., a Gaussian representation). The radar reference map 316 is a collection of Gaussians 318 corresponding to occupied areas. The Gaussians 318 (or the cells of the radar reference map 316) have associated location information (e.g., low or high-quality location information depending on how the radar reference

map 316 is generated). Each cell of the radar reference map 316 can have a single Gaussian 318 or be blank. Although not required, the radar reference map 316 has cells that are larger than the cells of the radar occupancy grid 308. The radar reference map 316 can be a stand-alone map or a layer in another map (e.g., a layer in a high-definition (HD) map).

[0054] The radar reference map 316 may contain metadata associated with the respective Gaussians 318. For example, the metadata may contain information about shapes or dimensions of clusters of Gaussians 318. The metadata may also include object associations, e.g., certain Gaussians 318 belong to a sign or guardrail. The location data may also be contained within the metadata. Techniques of generating the radar reference map 316 are discussed further in regard to FIGS. 5, 6, and 10-13.

[0055] FIG. 4 is an example illustration 400 of determining the radar occupancy grid 308 from the radar detections 304. Example illustration 400 is generally performed by the system 102, although portions or all of example illustration 400 may be performed by the cloud system 202. Example illustration 400 assumes that the location data associated with the radar detections 304 is high-accuracy location data (e.g., the navigation system 214 contains a high-accuracy GNSS).

[0056] At 402, one set (e.g., time) of the radar detections 304 is received (e.g., a radar detection 304 corresponding to a zero-point), and radar occupancy evidences 404 are determined from the one set of radar detections 304. The radar occupancy evidences 404 correspond to respective cells of the radar occupancy grid 308 and are indicative of occupied spaces within the radar occupancy grid 308. The radar occupancy evidences 404 are based on radar reflections 108 corresponding to the one set of radar detections 304 and associated range and azimuth uncertainties.

[0057] At 406, radar occupancy probabilities 408 are determined from the radar occupancy evidences 404. For example, the radar occupancy probabilities 408 may be given by Equation 1:

$$p=0.5+0.5e \quad [1]$$

where p is a radar occupancy probability 408 and e is an occupancy evidence 404.

[0058] Steps 402 and 406 may be repeated for other sets of radar detections 304 corresponding to later times/locations. For each of the later times/locations, the radar occupancy probabilities 408 are fused, at 410, with a decayed and shifted radar occupancy grid 412. The decayed and shifted radar occupancy grid 412 represents a current radar occupancy grid 414 (e.g., the radar occupancy grid 308 at the current time/location) with decayed probabilities and cells that have been shifted due to a movement of the vehicle between the previous time/location and current ones. The fusing is used to update the radar occupancy grid 308 based on subsequent radar detections 304 corresponding to the later times/locations.

[0059] In order to generate the decayed and shifted radar occupancy grid 412, at 416, the current radar occupancy grid 414 (e.g., at the respective location) is decayed to form a decayed radar occupancy grid 418. The decay comprises forgetting, minimizing, or otherwise removing old evidence from the current radar occupancy grid 414. This ensures that only recently generated cells are used for the fusing. It should be noted that the radar occupancy grid 308 is not

decayed; rather, the current radar occupancy grid **414**, which is a snapshot of the radar occupancy grid **308**, is decayed.

[0060] The decayed radar occupancy grid **418** is then shifted, at **420**, to form the decayed and shifted radar occupancy grid **412**. Each cell of the radar occupancy grid **308** (and the current radar occupancy grid **414**) represents an area. As such, as the vehicle **104** moves, the grid must be shifted. To shift the grid, a vehicle position **422** at the time of the shift/decay is received. The decayed radar occupancy grid **418** is shifted by integer numbers of cells that correspond to the vehicle position **422**. For example, the integer numbers may be based on a change between a vehicle position **422** that corresponds to the unshifted occupancy grid (e.g., the decayed radar occupancy grid **418** and the current radar occupancy grid **414**) and the vehicle position **422**.

[0061] As stated above, the decayed and shifted radar occupancy grid **412** is fused, at **410**, with the radar occupancy probabilities **408** of the current set of radar detections **304**. The fusion effectively accumulates radar occupancy probabilities **408** over time to enable the radar occupancy grid **308** to be more robust. Any fusion method may be used. For example, a Bayesian fusion method may be used according to Equation 2:

$$p_{new} = \frac{p_{old} \cdot p_{measured}}{(p_{old} \cdot p_{measured}) + (1 - p_{old}) \cdot (1 - p_{measured})} \quad [2]$$

where p_{new} is an occupancy probability for a respective cell (e.g., in the radar occupancy grid **308**), p_{old} is an existing radar occupancy probability for the respective cell (e.g., in the decayed and shifted radar occupancy grid **412**), and $p_{measured}$ is a radar occupancy probability **408** for the respective cell.

[0062] By using the example illustration **400**, radar occupancy probabilities **408** from multiple times/locations may be fused. In so doing, the radar occupancy grid **308** becomes accurate and robust for use in the example illustration **300**.

[0063] FIG. **5** is an example illustration **500** of determining the radar reference map **316** from the radar attributes **312**. At **502**, normal distribution transform (NDT) cells **504** are established. The NDT cells **504** are the cells of the radar reference map **316**. The NDT cells **504** are generally much larger (e.g., 15 times larger) than the cells of the radar occupancy grid **308**.

[0064] For each NDT cell **504** that has a plurality of radar attributes **312**, a Gaussian **318** (e.g., a multivariate distribution with a mean and covariance) is determined. In order to do so, at **506**, a mean and covariance **508** are determined for the respective NDT cell **504**. The mean and covariance **508** are based on radar attributes **312** identified within the respective NDT cell **504**. The mean for the respective NDT cell **504** may be determined based on Equation 3:

$$\mu_i = \sum_{j=1}^n p_j x_j \quad [3]$$

where p_j is the occupancy probability of the radar occupancy grid **308** at a given cell of the radar occupancy grid **308**, x_j is the given cell position, and n is a number of cells within the radar attributes **312** of the respective NDT cell **504**.

[0065] The covariance (e.g., 2x2 matrix) for the respective NDT cell **504** may be determined based on Equation 4:

$$\Sigma_i = \sum_{j=1}^n p_j (x_j - \mu_i)(x_j - \mu_i)^T \quad [4]$$

[0066] Advantageously, the mean and covariance **508** are based on occupancy probability. At **510**, the covariance for the respective NDT cell **504** may be manipulated such that the smallest eigenvalue of the covariance matrix is at least some multiple of the largest eigenvalue of the covariance matrix. The mean and covariance **508** (or a manipulated covariance if step **510** is performed) make up the Gaussian **318** for the respective NDT cell **504**. If there are one or fewer radar attributes **312** within the respective NDT cell **504**, the respective NDT cell **504** is indicated as unoccupied.

[0067] Steps **506** and **510** can then be performed for others of the NDT cells **504**. At **512**, the Gaussians **318** for the respective NDT cells **504** are combined to form the radar reference map **316**. Once combined, the NDT cells **504** of the radar reference map **316** may a single Gaussian **318** or nothing (e.g., indicated as unoccupied).

[0068] Although steps **506** and **510** are discussed as being performed on a respective NDT cell **504** and then other NDT cells **504**, in some implementations, step **506** may be performed on the NDT cell **504** as a group prior to performing step **510** on the group. For example, the mean and covariance **508** may be determined for each NDT cell **504** of a group. Then, the covariances may be manipulated, as needed, for each NDT cell **504** of the group.

[0069] By using the techniques of example illustrations **300**, **400**, and **500**, an accurate and space efficient radar reference map may be generated. Using a space efficient map lowers computational requirements and enables faster localization to support driver assist and autonomous driving functionalities.

[0070] FIG. **6** is an example illustration **600** of a method of building the radar reference map **316**. The example illustration **600** may be implemented utilizing the previously described examples, such as the example illustrations **100**, **300**, **400**, and **500**. Operations **602** through **610** may be performed by one or more entities of the system **102** and/or the cloud system **202** (e.g., the radar-localization module **210**). The order in which the operations are shown and/or described is not intended to be construed as a limitation, and any number or combination of the operations can be combined in any order to implement the illustrated method or an alternate method.

[0071] At **602**, a radar occupancy grid is received. For example, the radar-localization module **210** may receive the radar occupancy grid **308**.

[0072] At **604**, radar attributes are determined from the radar occupancy grid. For example, the radar-localization module **210** may use thresholding on occupancy probabilities within the radar occupancy grid **308** to determine the radar attributes **312**. The radar attributes **312** may comprise center coordinates of respective groups of cells of the radar occupancy grid that have occupancy probabilities above a threshold, or within a threshold range.

[0073] At **606**, radar reference map cells are formed. For example, the radar-localization module **210** may create the NDT cells **504** of the radar reference map **316**.

[0074] At **608**, Gaussians are determined for radar reference map cells that contain a plurality of radar attributes. For example, the radar-localization module **210** may determine the mean and covariance **508** for each of the NDT cells **504** that contain a plurality of radar attributes **312**.

[0075] At **610**, a radar reference map is generated. The radar reference map comprises the radar reference map cells that include the Gaussians and radar reference map cells

indicated as unoccupied. The radar reference map cells that are indicated as unoccupied correspond to radar reference map cells that do not contain a plurality of radar attributes. For example, the radar-localization module 210 may combine the NDT cells 504 with Gaussians 318 and NDT cells 504 that are indicated as unoccupied to form the radar reference map 316.

[0076] FIG. 7 is an example illustration 700 of determining the radar occupancy probabilities 408 using multiple vehicle runs with low-accuracy location data. FIG. 8 is an example illustration 800 of a similar process. As such, the following description describes example illustrations 700 and 800 simultaneously. Example illustrations 700 and 800 are generally performed by the cloud system 202 based on radar detections 304 received from the multiple vehicle runs, although one or more of the steps may be performed by the system 102 (e.g., the gathering of the radar detections 304 and transmitting the radar detections 304 to the cloud system 202 using the communication system 212). The radar occupancy probabilities 408 may then be fused at 410 to create the radar occupancy grid 308. The radar reference map 316 may then be generated from the radar occupancy grid 308, similar to example illustrations 100 and 300.

[0077] Gathering high-accuracy location data is often impractical or expensive for large areas. Example illustrations 700 and 800 determine the radar occupancy probabilities 408 using multiple runs with low-accuracy location data, such as that generated by most navigation systems (e.g., navigation system 214) implemented within consumer and commercial vehicles. Because of the low-accuracy location data, multiple runs are needed to get occupancy probabilities 408 that are accurate. Conventional techniques, such as multiple run averaging, often lead to smeared and useless probability data.

[0078] Example illustrations 700 and 800 use a statistical map fusion of multiple runs 702 (e.g., run 702A and run 702B) to correct for the errors in the low-accuracy location data. Any number of runs 702 may be used (albeit more than one), and the runs 702 may be created using the same vehicle or multiple vehicles and at different times. The statistical map fusion may be an extended particle filter simultaneous localization and mapping (SLAM) algorithm.

[0079] At 704, particles 706 are created at a given location (e.g., at time $t=0$). The particles 706 correspond to respective possible future locations of the vehicle 104, although the specific further locations have not been determined yet. The particles 706 are based on vehicle trajectories 708 that correspond to the given location (e.g., from navigation system 214).

[0080] At 710, future positions of the particles are predicted to form predicted positions 712 (e.g., of the vehicle 104). The predictions are based on the vehicle trajectories 708. For example, the vehicle trajectories 708 may comprise speed and yaw rate information. The speed and yaw rates may be used to predict new poses for the respective runs 702 and thus, the predicted positions 712 of the particles 706.

[0081] At 714, particle weights 716 are updated. In order to do so, the particles 706 are projected onto the radar occupancy grid 308, where each particle 706 has corresponding grid cells. The sum of all of the probability values (e.g., from the multiple runs 702) in the corresponding grid cell is the weight of the particle 706. In other words, the weight of a particle 706 corresponds to how well a next radar detection 304 fits the predicted position 712.

[0082] At 718, existing probabilities are updated using the particle weights 716 to create the radar occupancy probabilities 408.

[0083] At 720, the particles are resampled to create resampled particles 722. Particles with high weights may be split, while particles with low weights may disappear. The resampled particles 722 become the particles at time $t+1$ for use in the position prediction (step 710). The resampled particles 722 may also be used to correct the vehicle trajectories 708.

[0084] As the time t is incremented, the radar occupancy probabilities 408 are updated, and the radar occupancy probabilities 408 are fused with previous radar occupancy probabilities per 410.

[0085] One advantage of example illustrations 700 and 800 is that they build the radar occupancy probabilities 408 using data from the runs 702 simultaneously. As such, each set of particles 706 contains the same data for all the runs 702. This means that the radar occupancy probability 408 for one particle 706 contains data from all of the runs 702. Furthermore, the radar occupancy probabilities 408 are updated (e.g., at 718) using more than one particle 706. The statistical map fusion also allows for newer runs to be weighted more than older runs such that change detection (seasonal vegetation change, constructions, etc.) may be compensated on a cell level of the radar occupancy grid 308.

[0086] By using the techniques of example illustrations 700 and 800, accurate radar reference maps may be generated without using high-accuracy location data (e.g., by using consumer vehicles). As such, the radar reference maps are easier/more feasible to generate in a wider variety of locations.

[0087] FIG. 9 is an example illustration 900 of a method of determining the radar occupancy probabilities 408. The example illustration 900 may be implemented utilizing the previously described examples, such as the example illustrations 700 and 800. Operations 902 through 910 may be performed by one or more entities of the system 102 and/or the cloud system 202 (e.g., the radar-localization module 210). The order in which the operations are shown and/or described is not intended to be construed as a limitation, and any number or combination of the operations can be combined in any order to implement the illustrated method or an alternate method.

[0088] At 902, particles are created. For example, the radar-localization module 210 may receive radar detections 304 and create particles 706 that correspond to possible future locations of the vehicle 104 (or vehicles if the runs 702 correspond to multiple vehicles).

[0089] At 904, particle positions are predicted for the particles. For example, the radar-localization module 210 may receive the vehicle trajectories 708 and determine the predicted positions 712.

[0090] At 906, particle weights of the particles are updated. For example, the radar-localization module 210 may determine the particle weights 716 based on radar detections 304 that correspond to a later time.

[0091] At 908, probabilities are updated based on the particle weights. For example, the radar-localization module 210 may use the particle weights 716 to determine the radar occupancy probabilities 408 for fusing at 410.

[0092] At 910, the particles are resampled. For example, the radar-localization module 210 may create resampled particles 722 for predicting future positions at 710.

[0093] FIG. 10 is an example illustration 1000 of generating the radar reference map 316 using low-accuracy location data and an HD map 1002. The example illustration 1000 is generally implemented by the system 102.

[0094] The HD map 1002 contains object attributes 1004 that are determined at 1006 for HD map objects 1008 within the HD map 1002. The HD map objects 1008 may comprise street signs, overpasses, guard rails, traffic control devices, posts, buildings, k-rails, or other semi-permanent objects. The HD map 1002 contains information about each of the HD map objects 1008.

[0095] Object attributes 1004 that may be determined at 1006 include aspects such as types 1010, dimensions/orientations 1012, locations 1014, linkages to roads 1016 for the respective HD map objects 1008, and radar hardware information 1018. The types 1010 may define the respective HD map objects 1008, such as being street signs, overpasses, guard rails, traffic control devices, posts, buildings, or other semi-permanent objects. The dimensions/orientations 1012 may comprise physical dimensions and/or orientations (e.g., portrait vs. landscape, rotation relative to the ground, height relative to the ground) of the respective HD map objects 1008.

[0096] The locations 1014 may comprise UTM coordinates of the respective objects, and the linkages to roads 1016 may comprise specific locations of the respective objects relative to the corresponding roads. For example, a guardrail may have a certain offset relative to its cited location. In other words, the guard rail itself may not exist exactly at its location 1014. The linkage to road 1016 may account for that. In some implementations, the linkage to road 1016 may have a height or elevation aspect. For example, two objects may have similar coordinates but correspond to different roads. The height or elevation may be used to differentiate the two objects. The radar hardware information 1018 may comprise any information that affects a radar reflection 108 from the respective HD map object 1008.

[0097] Unaligned radar detections 1020 are received, at 1022, along with the object attributes 1004. The unaligned radar detections 1020 are similar to the radar detections 304 with low-accuracy location data. The object attributes 1004 are used to determine vehicle poses 1024 for the vehicle 104 at the respective times of the unaligned radar detections 1020.

[0098] In order to do so, the vehicle may localize itself relative to one or more of the HD map objects 1008 for each set of unaligned radar detections 1020. For example, the respective set of unaligned radar detections 1020 may contain detections of the one or more HD map objects 1008. Since the locations 1014 (and other object attributes 1004) of the one or more HD map objects 1008 are known, the radar-localization module 210 can determine the vehicle pose 1024 at the respective set of unaligned radar detections 1020.

[0099] Once the vehicle poses 1024 are known for the respective unaligned radar detections 1020, the unaligned radar detections 1020 may be aligned at 1026. The alignment may comprise shifting or rotating the unaligned radar detections 1020 based on the respective vehicle poses 1024.

[0100] The aligned radar detections become the radar detections 304. The radar detections 304 may then be used in example illustrations 300, 400, and 500 to generate the radar reference map 316.

[0101] The radar reference map 316 may optionally be sent to the cloud system 202. There, at 1028, the radar reference map 316 may be updated based on, or compiled with, other radar reference maps based on other similar runs by the vehicle or other vehicles.

[0102] By using the techniques of example illustration 1000, accurate radar reference maps may be generated without using high-accuracy location data (e.g., by using consumer vehicles). As such, the radar reference maps are easier/more feasible to generate in a wider variety of locations.

[0103] FIG. 11 is an example illustration 1100 of a method of generating the radar reference map 316 using low-accuracy location data and an HD map 1002. The example illustration 1100 may be implemented utilizing the previously described examples, such as the example illustration 1000. Operations 1102 through 1110 are generally performed by the system 102. The order in which the operations are shown and/or described is not intended to be construed as a limitation, and any number or combination of the operations can be combined in any order to implement the illustrated method or an alternate method.

[0104] At 1102, unaligned radar detections are received. For example, the radar-localization module 210 may receive the unaligned radar detections 1020.

[0105] At 1104, HD map object attributes are determined. For example, the radar-localization module 210 may determine the object attributes 1004 for the HD map objects 1008 of the HD map 1002.

[0106] At 1106, vehicle poses are determined for each set of unaligned radar detections. For example, the radar-localization module 210 may determine the vehicle poses 1024 based on the unaligned radar detections 1020 and the object attributes 1004.

[0107] At 1108, the unaligned radar detections are aligned. For example, the radar-localization module 210 may use the vehicle poses 1024 to shift the unaligned radar detections 1020. The aligned radar detections essentially become the radar detections 304.

[0108] At 1110, a radar reference map is generated. For example, the radar-localization module 210 may perform the example illustrations 300, 400, and 500 to generate the radar reference map 316 from the aligned radar detections (radar detections 304).

[0109] Optionally, at 1112, the radar reference map may be transmitted to a cloud system for updating. The updating may be based on similar reference maps generated by the vehicle or another vehicle. For example, the radar-localization module 210 of the cloud system 202 may modify or update the radar reference map 316 based on other similar radar reference maps received from the vehicle or other vehicles.

[0110] FIG. 12 is an example illustration 1200 of generating the radar reference map 316 using low-accuracy location data and the HD map 1002 (not shown). The example illustration 1200 is generally performed by the cloud system 202 based on information received from the system 102.

[0111] At the system 102, the unaligned radar detections 1020 are run through the example illustrations 300, 400, and 500 to generate an unaligned radar reference map 1202. The unaligned radar reference map 1202 may be similar to the radar reference map 316, except that the Gaussians 318 may not be in correct places (due to low-accuracy location data).

[0112] In some implementations, only a portion of example illustration 400 may be performed. For example, the steps up to step 410 may be performed to form individual occupancy grids for respective sets of unaligned radar detections 1020, as the low-accuracy location data may not lend itself to fusing with other data to form a single radar occupancy grid (e.g., radar occupancy grid 308). Each unaligned radar occupancy grid may then be used to form the unaligned radar reference map 1202.

[0113] The unaligned radar reference map 1202 (e.g., with unaligned Gaussians that are similar to Gaussians 318) is then sent to the cloud system 202. At 1204, the object attributes 1004 of the HD map 1002 are used by the cloud system 202 to align the unaligned radar reference map 1202 to generate the radar reference map 316.

[0114] In order to do so, similarly to example illustration 1000, the object attributes 1004 are usable to align or change the Gaussians 318 within the unaligned radar reference map 1202. For example, the object attributes 1004 may be used to determine Gaussians 318 within the unaligned radar reference map 1202 that correspond to the corresponding HD map objects 1008. Since the locations of those objects are known, the Gaussians 318 can be shifted to correct locations.

[0115] If the unaligned radar detections 1020 are contiguous in space (e.g., they incrementally follow a path), then the unaligned radar reference map 1202 may have accurate locations of the Gaussians 318 relative to one another. In such a case, the unaligned radar reference map 1202 may only need to be shifted or rotated globally (instead of having to align each Gaussian 318).

[0116] The unaligned radar detections 1020 may also be sent to the cloud system 202 to process in a manner similar to example illustration 1000. The unaligned radar reference map 1202, however, is much smaller and therefore easier to transmit.

[0117] By using the techniques of example illustration 1200, accurate radar reference maps may be generated without using high-accuracy location data (e.g., by using consumer vehicles). As such, the radar reference maps are easier/more feasible to generate in a wider variety of locations.

[0118] FIG. 13 is an example illustration 1300 of a method of generating the radar reference map 316 using low-accuracy location data and an HD map 1002. The example illustration 1300 may be implemented utilizing the previously described examples, such as the example illustration 1200. Operations 1302 through 1306 are generally performed by the cloud system 202. The order in which the operations are shown and/or described is not intended to be construed as a limitation, and any number or combination of the operations can be combined in any order to implement the illustrated method or an alternate method.

[0119] At 1302, an unaligned radar reference map is received. For example, the radar-localization module 210 may receive the unaligned radar reference map 1202 from the system 102.

[0120] At 1304, HD map object attributes are determined. For example, the radar-localization module 210 may determine the object attributes 1004 for the HD map objects 1008 of the HD map 1002.

[0121] At 1306, the unaligned radar reference map is aligned based on the HD map object attributes. For example, the radar-localization module 210 may use the object attri-

butes 1004 to determine Gaussians within the unaligned radar reference map 1202 that correspond to the associated HD map objects 1008. Differences between locations of the corresponding Gaussians and the HD map objects 1008 may then be used to correct, adjust, shift, or otherwise correct the unaligned radar reference map 1202 to form the radar reference map 316.

[0122] FIG. 14 is an example illustration 1400 of generating the radar occupancy grid 308 using the HD map 1002. The example illustration 1400 may be integrated with example illustrations 300 and 500 to generate the radar reference map 316. The example illustration 1400 does not need radar (e.g., radar reflections 108, radar detections 304) to create the radar occupancy grid 308. As will be apparent, however, example illustration 1400 does rely on an availability of the HD map objects 1008 in the HD map 1002.

[0123] Similar to example illustrations 1000 and 1200, the object attributes 1004 of the HD map objects 1008 are determined. The object attributes 1004 are used to determine, at 1402, shapes 1404. The shapes 1404 are geometric representations of the HD map objects 1008 relative to the radar occupancy grid 308. The shapes 1404 may be lines, polylines, polygons, geometric shapes, curves, complex curves, or statistical representations. For example, a location, orientation, and specifics (e.g., offset) of a guardrail may be used to generate a shape 1404 of occupied spaces in the radar occupancy grid 308 that correspond to the guardrail.

[0124] At 1406, sizes of the respective shapes 1404 are compared to a grid size of the radar occupancy grid 308. If a shape 1406 is not longer than a grid cell of the radar occupancy grid 308, the corresponding grid cell is marked as being occupied.

[0125] If, however, a shape 1406 is longer than a grid cell, the shape 1406 is oversampled, at 1408, to create an oversampled shape 1410. The oversampling comprises adding more points along the respective shape 1404 to simulate a radar occupancy grid output from radar detections (e.g., from radar detections 304).

[0126] The shapes 1404 or the oversampled shapes 1410 are then adjusted (e.g., transformed) based on the object attributes 1004 or some other information, at 1412, to form adjusted shapes 1414. Continuing with the guardrail example above, the system may know that guardrails of a certain type are always some distance further away from an edge of the road than the location contained within the object attributes 1004. The adjusted shapes 1414 are used to mark corresponding grid cells of the radar occupancy grid 308 as occupied.

[0127] In some implementations, the shapes 1404 or the oversampled shapes 1410 may be used to determine the radar reference map 316 instead of the radar occupancy grid 308. In other words, the Gaussians 318 may be generated based on the shapes 1404 or the oversampled shapes 1400 without first generating the radar occupancy grid 308.

[0128] As shown in the example radar occupancy grid 308, the HD map objects 1008 (e.g., the guardrails) are represented as occupied spaces. In this way, the radar occupancy grid 308 may be generated without necessitating a vehicle driving through the corresponding area.

[0129] FIG. 15 is an example illustration 1500 of generating the radar occupancy grid 308 using the HD map 1002 and machine-learned models. The example illustration 1500 may be integrated with example illustration 1400 (e.g., to

determine transformations for the adjusting at 1412). In some implementations, however, the machine-learned models may be used to indicate cells of the radar occupancy grid 308 directly (e.g., without example illustration 1400).

[0130] In example illustration 1500, the object attributes 1004 are used to select and apply models 1502 that are used to adjust the shapes at 1412. The models 1502 are based on respective object attributes 1004.

[0131] At 1504, a model 1502 is selected and applied to each HD map object 1008. The models 1502 are categorized by respective object attributes 1004. For example, a model 1502 may exist for each type of HD map object 1008 (e.g., model 1502-1 for a guardrail, model 1502-2 for a sign, model 1502-3 for a building, etc.). Multiple models 1502 may also exist for a single type of object. For example, different types of guardrails may have different respective models 1502.

[0132] The models 1502 are previously generated and may be taught using machine learning on real-world occupancy grid data. For example, occupancy data (e.g., portions of that determined by example illustrations 300 and 400) may be fed into a model training program along with object attributes 1004 and HD map locations of the corresponding HD map objects 1008. In so doing, the system is able to form rules and dependencies that “learn” how to represent corresponding HD map objects 1008 in the radar occupancy grid 308 (e.g., through shape adjustments).

[0133] The output of the respective models 1502 is occupancy grid data 1506 that corresponds to shape adjustment data. The shape adjustment data may then be used to adjust the shapes 1404 of example illustration 1400.

[0134] In some implementations, the occupancy grid data 1506 may comprise direct occupancy grid data. In such cases, shapes are not used, and the occupancy grid data 1506 is used as direct inputs to the radar occupancy grid 308 (e.g., the occupancy grid data 1506 is usable to indicate cells of the radar occupancy grid 308 as occupied).

[0135] As discussed above, the radar occupancy grid 308 can then be used to generate the radar reference map 316. In this way, real-world radar occupancy data can be used to estimate adjustments or occupancy of HD map objects 608 for representation in the radar occupancy grid 308.

[0136] By using the techniques of example illustrations 1400 and 1500, accurate radar reference maps may be generated without using radar detections of the corresponding areas (although, in some implementations, they may be used to update the maps and/or provide additional map data). As such, the radar reference maps are easier/more feasible to generate for a wider variety of locations. Furthermore, the maps may be generated completely offline as long as the HD map has sufficient objects.

[0137] FIG. 16 is an example illustration 1600 of a method of generating the radar occupancy grid 308 using the HD map 1002. The example illustration 1600 may be implemented utilizing the previously described examples, such as the example illustrations 1400 and 1500. Operations 1602 through 1608 are generally performed by the cloud system 202 as there is no need for the vehicle 104. The operations 1602 through 1608 (or portions thereof) may be performed by the system 102, however. The order in which the operations are shown and/or described is not intended to be construed as a limitation, and any number or combination of the operations can be combined in any order to implement the illustrated method or an alternate method.

[0138] At 1602, HD map object attributes are determined for HD map objects within an HD map. For example, the radar-localization module 210 may determine the object attributes 1004 for the HD map objects 1008 of the HD map 1002.

[0139] At 1604, shapes for the HD map objects are determined. In some implementations, the shapes may be oversampled based on sizes of the respective shapes and a grid size of a desired radar occupancy grid. For example, the radar-localization module 210 may determine the shapes 1404 for the HD map objects 1008 and oversample the shapes 1404 if they are longer than a grid size of the radar occupancy grid 308.

[0140] At 1606, adjustments are applied to the shapes as needed. The adjustments may be based on the HD map object attributes or machine-learned models for the respective HD map objects. For example, the radar-localization module 210 may adjust the shapes 1404 based on the object attributes 1004 or the models 1502.

[0141] At 1608, cells of a radar occupancy grid are indicated as occupied based on the shapes. For example, the radar-localization module 210 may indicate cells of the radar occupancy grid 308 based on the shapes 1404 (after oversampling and adjustment per 1406 and 1412).

[0142] By performing one or more of the techniques described above, accurate and space efficient radar reference maps may be generated. In this way, accurate localization may be achieved to support driver assist or autonomous driving capabilities with limited driver takeover. Less driver takeover leads to increased safety and driver satisfaction.

Updating a Radar Reference Map

[0143] The following section describes techniques for updating a radar reference map. Constant improvement of the radar reference map is required because any particular environment through which a vehicle travels tends to change over time. The radar reference map may include temporary obstacles that may not be considered attributes, which may be added or removed. Additionally, a radar reference map may include false attribute data or missing attributes (e.g., occlusions in the radar reference map). Current techniques for updating the radar reference map often use different sensors gathering attribute data in a single traversal of an environment. The techniques described below use radar-centric data gathered from multiple iterations of traversing the environment to update the quality of the radar reference map. The techniques use a process to ensure accurate and stable data, referred to as hindsight; two non-limiting examples of which are illustrated. One example uses radar detections of objects and compares them with an HD map. The second example uses only radar detections in using hindsight as a way to ensure the data is accurate and stable.

[0144] FIG. 17 illustrates a flow chart 1700 for updating, through multiple iterations, a radar reference map used for vehicle localization based on radar detections. The flow chart includes multiple runs 1702 (e.g., run 1 to run n where n can be any integer greater than 1), with each run being an iteration through an environment represented by a radar reference map. A first step 1704 of a radar-localization module (e.g., radar-localization module 210 from FIG. 2-1) is to receive radar detections and navigation data. In a step 1706, the radar detections and navigation data may be used by a static object identifier to identify static objects from the raw radar detections and navigation data collected in step

1704. A step **1708** generates an occupancy grid based on the static objects identified in step **1706**. In a step **1710**, a radar reference map is built from each occupancy grid generated in each run **1702**. A final step **1712** builds (in the initial run 1) and updates (in each successive run n) a relative NDT radar reference map (e.g., a map relative to the vehicle and using a relative coordinate system) based on the radar reference map generated in step **1710**. The final step **1710** is conditioned on an HD map **1714** not being utilized in step **1710** in combination with the occupancy grids generated in step **1708**. Otherwise if the HD map **1714** is utilized in step **1710**, the final step **1712** updates an absolute map (e.g., a universal map using a global coordinate system such as the UTM coordinate system) during each run **1702**.

[0145] FIG. 18 illustrates an example implementation **1800** of updating, through multiple iterations, a radar reference map used for vehicle localization based on radar detections. In the example implementation **1800**, a vehicle **1802** equipped with a radar-localization module (e.g., onboard, accessed through a cloud) uses hindsight to accumulate accurate and stable radar data about a dynamic object **1804**. Radar sensors on the vehicle **1802** have radar sweeps **1806** that transmit electromagnetic energy and receive the reflections of the electromagnetic energy off of objects. The radar sweeps **1806** may not be illustrated to scale in FIG. 18 or in any of the other figures in which they are depicted. The dynamic object **1804** is moving from in front (dynamic object **1804-1**) of the vehicle **1802** to beside (dynamic object **1804-2**) the vehicle **1802** to behind (dynamic object **1804-3**) the vehicle **1802**. A blind spot **1808** represents a range-rate blind spot of one or more radar sensors on the vehicle **1802**. Although in the example implementation **1800**, the blind spot **1808** is related to the range rate state of the dynamic object, any dynamic state of the dynamic object **1804** may be used as an example.

[0146] Corner radar sensors mounted on the vehicle **1802** are configured such that the bore angles of the radar sensors are 45° in relation to the longitudinal axis of the vehicle **1802**. This enables the corner radar sensors to have the same radar performance as the front and rear radar sensors of the vehicle **1802**. The accumulated data from all the radar sensors present the most stable results of object detection at the rear of the vehicle **1802** with the dynamic object **1804** reflecting several radar detections from the different radar sensors. As an occupancy grid presents accumulated data, all available sensor detections contribute to a radar reference map even if the rear detection is the only one taken into consideration. The detections from all the radar sensors contribute to the occupancy probability, and none of the radar data are omitted. This process may be interpreted as an application of binary weights for each cell of the occupancy grid, and the dynamic object **1804** may be excluded from the updated radar reference map.

[0147] FIG. 19 illustrates a pipeline **1900** for updating, through multiple iterations, a radar reference map used for vehicle localization based on radar detections. At a radar sensor stage **1902** of the pipeline **1900**, a radar sensor **1904** receives raw radar detections **1906**. At a static object identifier **1908** stage, the raw radar detections **1904** are classified at **1910** as static or dynamic radar detections, and augmented static radar detections **1912** are passed to an occupancy grid generator **1914** stage. In the occupancy grid generator **1914** stage, occupancy evidence from the augmented static radar detections **1912** is extracted at **1916**. At **1918**, the extracted

occupancy evidence from **1916** is used to accumulate and filter static occupancy on an occupancy grid **1920**. An accumulator **1922** stage then extracts hindsight information at **1924**.

[0148] FIGS. 20-1 to 20-3 illustrate an example implementation of hindsight used to update, through multiple iterations, a radar reference map used for vehicle localization based on radar detections. In FIG. 20-1, a vehicle **2002**, equipped with a radar-localization module (e.g., onboard, accessed through a cloud) uses hindsight to accumulate accurate and stable radar data about a static object **2004** (a street sign **2004**). In a first time frame **2000-1** in FIG. 20, the street sign **2004** may be detected first by radar sweeps **2006-1** and **2006-2**. Radar sweeps **2006-3** and **2006-4** have not yet detected the street sign **2004**.

[0149] In a second time frame **2000-2** in FIG. 20-2, the vehicle **2002** has moved down the road, and the street sign **2004** is lateral to the vehicle **2002**. At least radar sweeps **2006-1**, **2006-2**, and possibly radar sweep **2006-3** have detected the street sign **2004**. Additionally, radar sweeps **2006-1** and **2006-2** may have detected a second static object **2008** (a tree **2008**).

[0150] In a third time frame **2000-3** in FIG. 20-3, the vehicle **2002** has moved forward such that the street sign **2004** has been detected by radar sweeps **2006-1**, **2006-2**, **2006-3**, and **2006-4**, accumulatively. At this point, the street sign is in hindsight of the radar sweeps, and the radar data relative to the street sign may be considered stable and accurate with a high confidence level. At least radar sweeps **2006-1**, **2006-2**, and possibly radar sweep **2006-3** have detected the tree in time frame **2000-3** and have a moderate confidence level, but higher than a third static object **2010** (a guard rail **2010**). Only sweeps **2006-1** and **2006-2** may have detected the guard rail **2010**.

[0151] Driving on the road in the depictions **2000-1** to **2000-3** over multiple iterations may increase the confidence level that the static objects **2004**, **2008**, and **2010** are permanent and can be considered attributes. If any of the static objects **2004**, **2008**, and **2010** disappear during any of the multiple iterations of runs down the road, the confidence level for that object may fall, and the object may be removed from the updated radar reference map. Furthermore, consider a moving vehicle traveling in another direction (e.g., in a lane adjacent to the vehicle **2002**). Conventional techniques may consider the moving vehicle when it is immediately adjacent to the vehicle **2002**. By using hindsight, the moving vehicle will not be considered. In this manner, the radar reference map may be updated after each iteration to add or remove attributes as they are detected or disappear, and to remove any spurious noise that may be present in the radar reference map.

[0152] FIG. 21 illustrates an example process **2100** to determine and use a hindsight maximum boundary for radar coordinates when updating, through multiple iterations, a radar reference map used for vehicle localization based on radar detections. There are two options for radar coordinates, radar relative coordinates, and radar absolute coordinates. At **2102**, all radar reference maps are loaded. Additionally, if using radar absolute coordinates, at **2104**, sample points from one or more HD maps are extracted, and at **2106**, the extracted sample points are transformed into a statistical distribution. At **2108**, all of the hindsight samples are collected, and a minimum and maximum for the coordinates (X and Y) are found. At **2110**, the minimum and

maximum for the coordinates are used to create a maximum boundary for a new radar group. At **2112**, a resolution is chosen, and an index of the samples in the resolution of the coordinates index is checked. At **2114**, based on the outcomes of the check procedure at **2112**, if the sample is not new in the chosen resolution, then at **2116**, only the log-odds ratios, by either Bayes Inverse Model or by maximum policy, are merged into the radar reference maps. If, at **2114**, the sample is new in the chosen resolution, then at **2118**, the original index of the new sample is added into a new map index.

Example Architecture

[**0153**] Applying the techniques discussed in this document to localize a vehicle based on radar detections may have many advantages. By using radar-centric systems (e.g., a radar system including four short-range radar sensors, one radar sensor located at each of the four corners of a vehicle), adverse weather and lighting conditions that may degrade the effectiveness of other systems (e.g., cameras, LiDAR) are overcome by only using radar systems. Additionally, the radar systems used may be less expensive than some other sensor systems.

[**0154**] The techniques and systems described in this document enable a vehicle to determine its vehicle pose, or location, at a sub-meter accuracy level. To localize a vehicle based on radar detections, according to the techniques described herein, two steps may be performed, including steps to: construct an accurate radar reference map, and compare the radar reference map against radar detections generated in real time to accurately locate the vehicle. FIGS. **22-1** and **22-2** describe one detailed example of how to achieve these two steps with a radar-localization module, such as the radar-localization module illustrated in FIGS. **2-2** and **2-3**. Other examples may preclude some of the details in FIGS. **22-1** and **22-2** (e.g., some submodules of the radar-localization module are optional, as illustrated in FIGS. **2-2** and **2-3**).

[**0155**] FIGS. **22-1** to **22-2** illustrate an example flow diagram **2200** of a process for vehicle localization based on radar detections. FIG. **22-1** covers the first step as flow diagram **2200-1**, and FIG. **22-2** covers the second step as flow diagram **2200-2**. The sub-steps within a dashed box **2202** of FIG. **22-1** and FIG. **22-2** are identical in each step.

[**0156**] The first step of vehicle localization **2204** is to construct an accurate radar reference map containing attribute information. Details of several different processes of constructing the radar reference map have been described above. The example flow diagram illustrated in FIG. **22-1** details the architecture of constructing the radar reference map in the vehicle **2204-1** specially equipped with a high-quality navigation system. The radar-localization module is in a reference mode for this step.

[**0157**] In the example flow diagram illustrated in FIG. **22-1**, one or more radar sensors **2206** receive raw radar detections **2208**. Simultaneously, high-quality GNSS **2210-1** and inertial measurement unit (IMU) **2212-1** data are collected by a vehicle state estimator **2214** to determine the vehicle state and vehicle pose. The raw radar detections **2208** are collected at a certain rate, for example, every **50** milliseconds (ms). The raw radar detections **2208** are identified as static detections or dynamic detections by a static object identifier **2216**. The static object identifier **2216** uses vehicle state information (e.g., range rate) provided by the

vehicle state estimator **2214** to determine (e.g., determine through range rate de-aliasing) the identification of the raw radar detections **2208**.

[**0158**] The static detections are output to an occupancy grid generator **2218**. The occupancy grid generator **2218** estimates an occupancy probability for each cell (e.g., 20 centimeters (cm) by 20 cm cell) in the occupancy grid. The cell size may impact the processing time for this sub-step. Different processes, including Bayesian inference, Dempster Shafer theory, or other processes, can be used to estimate the occupancy probability for each cell. The occupancy grid generated by the occupancy grid generator **2218** may be in relative coordinates (e.g., local frame of reference) to the vehicle **2204-1** as the occupancy grid generator **2218** receives vehicle state data from the vehicle state estimator **2214** that assists in the creation of the occupancy grid.

[**0159**] A scan-matcher **2220** performs a series of sub-steps **2220-1** to **2220-4**. Sub-step **2220-1** transforms the occupancy grid from a relative coordinate system to a UTM coordinate system. Vehicle state information from the vehicle state estimator **2214** is used in the transformation process. Sub-step **2220-2** accumulates occupancy grid outputs from sub-step **2220-1** at a certain rate (e.g., 10 Hz). The rate may be tuned based on a driving scenario (e.g., quantity of attributes in the environment of the vehicle **2204-1**) and outputs the accumulated occupancy grid to sub-step **2220-3**. Sub-step **2220-3** chooses occupancy grid cells based on a high-occupancy probability (e.g., a probability equal to or greater than 0.7). The chosen occupancy grid cells may be represented as a point cloud. Sub-step **2220-4** transforms the chosen occupancy grid cells in a Gaussian representation to create a Gaussian, or NDT, radar reference map. The NDT radar reference map can be stored locally on the vehicle **2204-1** or uploaded to a cloud **2222**.

[**0160**] The second step of vehicle localization **2204** is to determine an adjusted vehicle pose based on a comparison of radar detections of attributes with a radar reference map. The example flow diagram in FIG. **22-2** details the architecture used to determine this adjusted vehicle pose for the vehicle **2204-2**. It can be assumed in this example that the vehicle **2204-2** is configured as a non-luxury vehicle manufactured in mass quantities and at cost margins that make using high-quality GNSS and sensor packages not practical. That is, the GNSS system **2210-2** and the IMU **2212-2** used in the vehicle **2204-2** may be considered average (lower quality) commercial navigation systems. The radar-localization module is in a real-time localization mode for the second step. All of the sub-steps inside the dashed box **2202** are identical to those of the first step illustrated in FIG. **22-1** and, for simplicity, will not be covered again.

[**0161**] At step **2224**, a radar reference map, based on the vehicle state as determined by the vehicle state estimator **2214**, is downloaded from the cloud **2222**. The radar reference map is compared to the chosen occupancy grid cells at sub-step **2220-5**, and based on that comparison, the vehicle pose is corrected for the vehicle **2204-2**. A confidence level of an accuracy of the corrected pose may be used in determining the accuracy of the corrected pose. Additionally, the corrected vehicle pose may be used to remove errors (e.g., drift) in the GNSS system **2210-2** and the IMU **2212-2**.

[**0162**] The comparison process matches the radar reference map, the radar reference map being a set of Gaussian representations that minimize memory size of the data and contain statistical information, with a real-time “map” that is

derived from real-time radar detections. The real-time map is a sub-section of the area represented by the radar reference map and contains the same Gaussian-type statistical information as the radar reference map. In another implementation, the filtered outputs from the occupancy grid may be directly compared to the Gaussians in the radar reference map.

[0163] The NDT process matches statistical probability distributions between reference data (e.g., discretized cells with a built-in statistical model). For any given transformation (e.g., x, y, and rotation) for real-time points (e.g., occupancy grid outputs), the real-time points can be assigned to discretized NDT cells that contain the statistical distribution in a model from the radar reference map. The real-time points are occupancy grid cells that are considered occupied but are treated as points with a probability value attached to the points. Probability distributions of the real-time points can therefore be calculated. The NDT process finds an optimal transformation that maximizes the probability distributions.

[0164] FIG. 23 illustrates an example process 2300 for vehicle localization based on radar detections. At 2302, radar detections are received by at least one or more processors of a vehicle. At 2304, navigation data is received by at least one or more processors of a vehicle. At 2306, Ego-trajectory information about a current dynamic state of the vehicle is output by at least one or more processors of the vehicle. This ego-trajectory information may include at least one of direction of travel, velocity, range rate, and yaw rate, as determined from the radar detections and navigation data. At 2308, attribute data is extracted from the radar detections and the ego-trajectory information. At 2310, a normal distribution transformation grid is determined from the extracted attribute data and a radar reference map. At 2312, a vehicle pose is corrected according to the normal distribution transformation grid to localize the vehicle.

[0165] In this manner, the techniques and systems described herein use cost-effective systems, disregard dynamic objects, maximize a statistical distribution pattern, and handle static noise efficiently to accurately adjust the pose of a vehicle.

EXAMPLES

Example 1

[0166] A method comprising: receiving, by a processor, a radar occupancy grid comprising occupancy probabilities and occupancy grid attributes for respective occupancy cells of the radar occupancy grid; determining radar attributes based on the occupancy probabilities and the occupancy grid attributes; forming radar reference map cells; for each radar reference map cell that contains a plurality of radar attributes, determining a Gaussian for the radar reference map cell, the Gaussian comprising a mean and covariance of the radar attributes within the radar reference map cell; and generating a radar reference map comprising the radar reference map cells and the Gaussians determined for the radar reference map cells that contain the plurality of radar attributes.

Example 2

[0167] The method of example 1, wherein the occupancy cells are smaller than the radar reference map cells.

Example 3

[0168] The method of example 1 or 2, further comprising, for each radar reference map cell that does not contain a plurality of radar attributes, indicating the radar reference map cell as unoccupied.

Example 4

[0169] The method of any preceding example, wherein the radar attributes are center coordinates of respective groups or clusters of one or more of the occupancy cells.

Example 5

[0170] The method of any preceding example, wherein the groups are determined based on the respective occupancy probabilities of the occupancy cells within the groups being higher than a threshold.

Example 6

[0171] The method of any preceding example, wherein the groups are determined based on contours of the radar occupancy grid.

Example 7

[0172] The method of any preceding example, wherein the groups are determined based on bounding boxes of the radar occupancy grid.

Example 8

[0173] The method of any preceding example, wherein the radar attributes comprise respective weights based on one or more of the occupancy probabilities, object classifications, or radar cross-section values.

Example 9

[0174] The method of any preceding example, wherein each radar reference map cell models the radar attributes as a normal distribution.

Example 10

[0175] The method of any preceding example, wherein the mean and covariance are based on occupancy probabilities of the occupancy cells that form the radar attributes within the radar reference map cell.

Example 11

[0176] The method of any preceding example, further comprising: determining that a smallest eigenvalue of the covariance is not at least a predefined multiple of a largest eigenvalue of the covariance; and manipulating the covariance such that the smallest eigenvalue of the covariance is at least the predefined multiple of the largest eigenvalue.

Example 12

[0177] The method of any preceding example, further comprising determining the radar occupancy grid based on one or more of: multiple vehicle runs with low-accuracy location data; a high-definition map; high-accuracy location data; or a fusing of multiple occupancy probabilities for each of the occupancy cells.

Example 13

[0178] A system comprising: at least one processor; and at least one computer-readable storage medium comprising instructions that, when executed by the processor, cause the system to: receive a radar occupancy grid comprising occupancy probabilities or other information for respective occupancy cells of the radar occupancy grid; determine radar attributes based on the occupancy probabilities or the other information; form radar reference map cells; for each radar reference map cell that contains a plurality of radar attributes, determine a Gaussian for the radar reference map cell, the Gaussian comprising a mean and covariance of the radar attributes within the radar reference map cell; and generate a radar reference map comprising the radar reference map cells and the Gaussians determined for the radar reference map cells that contain the plurality of radar attributes.

[0179] Example 14: The system of example 13, wherein the other information comprises one or more of radar cross-section, amplitude, object classification from other sensors, or machine learning information.

[0180] Example 15: The system of example 13 or 14, wherein the determination of the radar attributes comprises applying a clustering algorithm on the radar occupancy grid.

[0181] Example 16: The system of any of examples 13 to 15, wherein the radar attributes are center coordinates of respective clusters of one or more of the occupancy cells.

[0182] Example 17: The system of any of examples 13 to 16, wherein: the instructions further cause the system to determine which of the occupancy cells of the radar occupancy grid have occupancy probabilities higher than a threshold; and the radar attributes comprise respective groups of the occupancy cells with occupancy probabilities higher than the threshold.

[0183] Example 18: The system of any of examples 13 to 17, wherein the radar attributes are center coordinates of the respective groups of occupancy cells with occupancy probabilities higher than the threshold.

[0184] Example 19: The system of any of examples 13 to 18, wherein the instructions further cause the system to, for each radar reference map cell that does not contain a plurality of radar attributes, indicate the radar reference map cell as unoccupied.

[0185] Example 20: The system of any of examples 13 to 19, wherein the determination of the Gaussian comprises modeling the radar attributes as a normal distribution.

[0186] Example 21: A method comprising: receiving, by a processor, radar reference map cells, each radar reference map cell comprising: a Gaussian having a mean and covariance of radar attributes within the radar reference map cell; and metadata associated with the radar reference map cell, the metadata comprising location data; determine an HD map comprising object attributes of HD map objects; aligning the Gaussians of the radar reference map based on one or more of: the object attributes of the HD map objects; or the metadata; and outputting the aligned Gaussians for use by a system of a vehicle for driving.

[0187] Example 22: The method of example 21, wherein the metadata comprises an indication or classification of an object associated with the radar reference map cell.

[0188] Example 23: The method of example 21 or 22, wherein the metadata is usable to determine a shape or dimension of an object associated with the radar reference map cell.

[0189] Example 24: The method of any of examples 21 to 23, wherein the location data is low-quality location data.

[0190] Example 25: The method of any of examples 21 to 24, wherein the location data is post-processed low-quality location data.

[0191] Example 26: The method of any of examples 21 to 25, wherein the aligning comprises correcting the location data.

Conclusion

[0192] Although implementations for radar reference map generation have been described in language specific to certain features and/or methods, the subject of the appended claims is not necessarily limited to the specific features or methods described. Rather, the specific features and methods are disclosed as example implementations for radar reference map generation. Further, although various examples have been described above, with each example having certain features, it should be understood that it is not necessary for a particular feature of one example to be used exclusively with that example. Instead, any of the features described above and/or depicted in the drawings can be combined with any of the examples, in addition to or in substitution for any of the other features of those examples.

What is claimed is:

1. A method comprising:

receiving, by a processor, a radar occupancy grid comprising occupancy probabilities and occupancy grid attributes for respective occupancy cells of the radar occupancy grid;

determining radar attributes based on the occupancy probabilities and the occupancy grid attributes;

forming radar reference map cells;

for each radar reference map cell that contains a plurality of radar attributes, determining a Gaussian for the radar reference map cell, the Gaussian comprising a mean and covariance of the radar attributes within the radar reference map cell; and

generating a radar reference map comprising the radar reference map cells and the Gaussians determined for the radar reference map cells that contain the plurality of radar attributes.

2. The method of claim 1, wherein the occupancy cells are smaller than the radar reference map cells.

3. The method of claim 1, further comprising, for each radar reference map cell that does not contain a plurality of radar attributes, indicating the radar reference map cell as unoccupied.

4. The method of claim 1, wherein the radar attributes are center coordinates of respective groups or clusters of one or more of the occupancy cells.

5. The method of claim 4, wherein the groups are determined based on the respective occupancy probabilities of the occupancy cells within the groups being higher than a threshold.

6. The method of claim 4, wherein the groups are determined based on contours of the radar occupancy grid.

7. The method of claim 4, wherein the groups are determined based on bounding boxes of the radar occupancy grid.

8. The method of claim 1, wherein the radar attributes comprise respective weights based on one or more of the occupancy probabilities, object classifications, or radar cross-section values.

9. The method of claim 1, wherein each radar reference map cell models the radar attributes as a normal distribution.

10. The method of claim 1, wherein the mean and covariance are based on occupancy probabilities of the occupancy cells that form the radar attributes within the radar reference map cell.

11. The method of claim 1, further comprising determining the radar occupancy grid based on one or more of:
multiple vehicle runs with low-accuracy location data;
a high-definition map;
high-accuracy location data; or
a fusing of multiple occupancy probabilities for each of the occupancy cells.

12. A method comprising:

receiving, by a processor, radar reference map cells, each radar reference map cell comprising:

a Gaussian having a mean and covariance of radar attributes within the radar reference map cell; and
metadata associated with the radar reference map cell, the metadata comprising location data;

determine an HD map comprising object attributes of HD map objects;

aligning the Gaussians of the radar reference map based on one or more of:

the object attributes of the HD map objects; or
the metadata; and

outputting the aligned Gaussians for use by a system of a vehicle for driving.

13. A system comprising:

at least one processor; and

at least one computer-readable storage medium comprising instructions that, when executed by the processor, cause the system to:

receive a radar occupancy grid comprising occupancy probabilities or other information for respective occupancy cells of the radar occupancy grid;

determine radar attributes based on the occupancy probabilities or the other information;

form radar reference map cells;

for each radar reference map cell that contains a plurality of radar attributes, determine a Gaussian for the radar reference map cell, the Gaussian comprising a mean and covariance of the radar attributes within the radar reference map cell; and

generate a radar reference map comprising the radar reference map cells and the Gaussians determined for the radar reference map cells that contain the plurality of radar attributes.

14. The system of claim 13, wherein the other information comprises one or more of radar cross-section, amplitude, object classification from other sensors, or machine learning information.

15. The system of claim 13, wherein the determination of the radar attributes comprises applying a clustering algorithm on the radar occupancy grid.

16. The system of claim 15, wherein the radar attributes are center coordinates of respective clusters of one or more of the occupancy cells.

17. The system of claim 13, wherein:

the instructions further cause the system to determine which of the occupancy cells of the radar occupancy grid have occupancy probabilities higher than a threshold; and

the radar attributes comprise respective groups of the occupancy cells with occupancy probabilities higher than the threshold.

18. The system of claim 17, wherein the radar attributes are center coordinates of the respective groups of occupancy cells with occupancy probabilities higher than the threshold.

19. The system of claim 13, wherein the instructions further cause the system to, for each radar reference map cell that does not contain a plurality of radar attributes, indicate the radar reference map cell as unoccupied.

20. The system of claim 13, wherein the determination of the Gaussian comprises modeling the radar attributes as a normal distribution.

* * * * *