



(12) **EUROPEAN PATENT APPLICATION**

(43) Date of publication:  
**14.12.2016 Bulletin 2016/50**

(51) Int Cl.:  
**H04L 12/721<sup>(2013.01)</sup>** **H04L 12/741<sup>(2013.01)</sup>**  
**H04L 12/743<sup>(2013.01)</sup>**

(21) Application number: **15193316.5**

(22) Date of filing: **06.11.2015**

(84) Designated Contracting States:  
**AL AT BE BG CH CY CZ DE DK EE ES FI FR GB  
GR HR HU IE IS IT LI LT LU LV MC MK MT NL NO  
PL PT RO RS SE SI SK SM TR**

Designated Extension States:

**BA ME**

Designated Validation States:

**MA MD**

(30) Priority: **11.06.2015 PL 41266315**

(71) Applicant: **Akademia Gorniczo-Hutnicza im.  
Stanislawa  
Staszica w Krakowie  
30-059 Krakow (PL)**

(72) Inventors:

- **Domzal, Jerzy**  
**30-059 Kraków (PL)**
- **Wójcik, Robert**  
**30-059 Kraków (PL)**

(74) Representative: **Fiolka, Janusz**  
**European Patent Attorney**  
**Os. Dywizjonu 303, bl.21C/74**  
**31873 Crakow (PL)**

(54) **METHOD OF AGGREGATION OF FLOWS IN ICT NETWORKS**

(57) The invention relates to a router for data transmission in ICT networks, characterized in that it maintains two tables, namely a flow table associating a given flow with a route identifier, and route table containing the route IDs and information on them. Further the invention re-

lates to a method of data transmission in ICT networks, characterized in that for the transmission of packets a domain route is used for selection of an output port of the router.

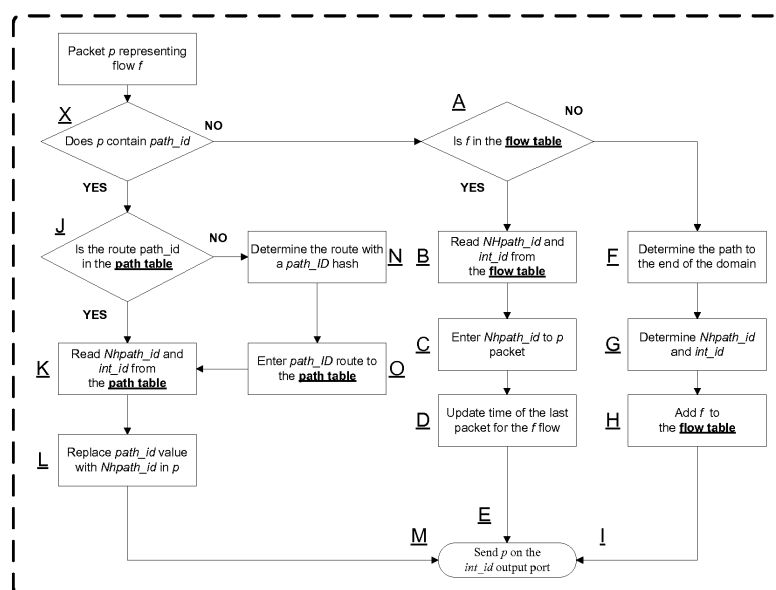


Figure 3 – Block diagram of the packets handling in the flow aggregation mechanism

## Description

**[0001]** The subject of the present invention is a method for flow aggregation over IP (Internet Protocol) networks. The embodiment of the present invention allows for stable network traffic identified by flows beginning from a router.

**[0002]** The main task of the router is routing IP packets to destination nodes, by forwarding packets to appropriate output interfaces. The method according to the invention can be used with routers in which network traffic is identified by flows; where flow identifiers can be determined in many ways. For example, in Flow-Aware Networks (FAN), flows are identified based on five fields in the packet header: source and destination IP addresses, source and destination port numbers, as well as the transport layer protocol identifier.

**[0003]** In most modern routers, network traffic is transmitted via packets. Whenever a packet arrives at a router the destination address to which the packet is destined for is read from its header. Then, the output interface is read from the routing table and a packet is sent to the appropriate output queue of the router. Another approach is for traffic network to be identified by flows. In that case, routers have an additional table, containing at least flow identifiers and corresponding output interface identifiers from the router. When a packet arrives at a router, the flow identifier to which the packet belongs is determined based on its header. If this identifier is on the flow list, the output interface identifier is determined. If the ID is not listed, then it is usually read from the routing table and added to the flow list so that the next flow packets are directed along the same route. The way of handling flows is of a general nature, and can be modified and improved. The main advantage of this approach is to ensure the correct handling of packets belonging to particular flows in one route in the network. In a network without flow identification, packets can reach their destination nodes via different routes, which can cause problems, such as interruptions of a proper order of packets and various delays. On the other hand, the number of flows is one of the fundamental problems in handling of flow-based traffic. There can be many flows in extensive networks, so routers need sufficiently large memory to maintain their flow lists. An even bigger problem might be searching this list with every incoming packet. Those activities can significantly load the device and increase its response time.

**[0004]** The essence of this patent application is a method of establishing the entire route of a flow in an edge router of an autonomous system. This identifier is recorded on a separate list in the router, along with the output identifier. All routers on the route behave in an identical way. Thus, based on a new list, the router always knows where to send the packet. In addition, the number of entries in the list is limited to the number of possible routes on the network, because different flows transmitting traffic along the same route are aggregated under one entry

in the table. The number of entries in the table is significantly smaller than the number of flows currently served by the router. As a result, the problem of scalability associated with handling of flows is solved.

**[0005]** The invention, according to the patent application, can be particularly advantageous when used in networks using multipath transmission data, wherein the traffic is identified using flows.

**[0006]** Currently, Multi-Protocol Label Switching (MPLS) is used for transmitting traffic along multiple paths. The MPLS is defined in RFC3031. The MPLS network for packet-forwarding uses labels placed between the header of the second layer and the header of the third layer (the OSI model). The selected packets - for example, the one representing the flow - receive their label at the edge of the network and are routed within the network based on this. In the network, labels are distributed using special signalling protocols, e.g. LDP (Label Distribution Protocol). Routes for packets with a specific label are reserved statically by an operator. The Resource Reservation Protocol - Traffic Engineering (RSVP-TE), as described in RFC3209 (revised and enlarged in RFC5151) is used for this purpose. MPLS does not have solutions for the creation and deletion of paths in a dynamic manner depending on the state of the load of the network. Paths that are established using the MPLS are static. Also, MPLS has no algorithms for searching for alternative, optimal paths.

**[0007]** Multipath transmission can also be achieved by means of Software-Defined Networks (SDN). SDN requires the use of a special controller to maintain current knowledge of the state of the network and, on this basis, make forwarding decisions. For this purpose, it is necessary to implement a signalling protocol between the controller and network nodes - use of a controller provides great possibilities for traffic control. It is then possible to set the routes for flows, including aggregating them into larger groups. However, such arrangements, similarly to MPLS, do not eliminate the need for a complete flows list, at least in the edge routers.

**[0008]** Patent application P.404986 entitled "A device for multi-path packet routing in ICT networks and the means of its application"; and a routing method using multiple paths for flow transmission in packet networks entitled "Flow-Aware Multi-Topology Adaptive Routing, FAMTAR" have both previously been disclosed. The methods they describe use multiple paths for forwarding data between nodes. The basic element of the FAMTAR router is a Flow Forwarding Table (FFT), which records the flow identifiers and the output interface identifiers. Entries are created upon arrival to the router of the first packet of a new flow, based on the current routing table. Once a flow has been accepted on its route it will not change until the flow ends. In the network, the states of all links are observed at all times, and if one overloads, it is excluded from the routes for new flows. This makes it possible to use multiple routes while ensuring stable traffic transmission. The solution applied in this current

invention can be successfully used to provide flow aggregation in routers using the FAMTAR mechanism.

**[0009]** Another method for traffic transmitted as multi-path packets aggregated into groups, was disclosed in U.S. Patent application WO2006EP65975. Traffic units are determined based on a traffic matrix and the forwarding paths are designated by the central controller in the network. The aim is to increase the amount of traffic forwarded in the network. However, the downside is the need for a central controller.

**[0010]** Another method for forwarding data aggregated in a network into flows was disclosed in Patents 6751663 B1 and EP1039694 A2. This aggregation mechanism operates with a, so called, data collection layer, which is responsible for receiving active data flows from the network and properly processing them. The flow aggregation layer is another element of the system responsible for aggregating data flows from the data collection layer. However, the downside of this solution is the need to implement two layers, which in practice, operate as a central controller.

**[0011]** A method of aggregating data flows into clusters in a network and then identifying the flows that could adversely affect transmission across the network was disclosed in U.S. Patent US 8976661 B2. Using the set function, the flows are aggregated into clusters with the NetFuse mechanism, working from a device located between the network nodes and the central controller. The information provided from the network enables NetFuse to keep constructing clusters and guiding selected flows to them. As a result, flows are aggregated and the network is more scalable. However, the downside of this method is, again, the need to use a central controller, as well as an additional device for the NetFuse mechanism.

#### Technical solution

**[0012]** The invention described herein is a device that operates within a single network, hereinafter referred to as the domain, and is administered by a relevant operator. Transmissions can enter the domain, leave the domain, be operated entirely within the domain, and go through the domain.

**[0013]** The essence of this new invention lies in the transfer of the route identifier by each packet in the domain. The route ID is carried in the IP packet header. With the IPv4 protocol, the Type of Service field (Differentiated Services Field acc. to RFC 2474) can be used. With the IPv6 protocol, the Traffic Class fields or a 20-bit Label Flow field can be used.

**[0014]** The Route ID is the result of the one-way hash function acting on the list of nodes on the route.

**[0015]** For example, if we were to use the md5 hash algorithm, then for the route:

- "192.168.1.1, 192.168.2.1, 192.168.10.1"
- we would obtain the following ID:
- "f231 bfb5577f2a1 b39f21 b2b48b9f3b",

while the route ID as seen from the perspective of the next node will be a hash calculated for the following route:

- "192.168.2.1, 192.168.10.1"
- which would be:
- "ce162bc6b3343a705812736956a4ff9f".

**[0016]** The hash algorithm must be selected appropriately, meaning that it must generate a hash that will fit in a particular field of the IP header, as it will be carried by each packet. In addition, it cannot generate the same shortcuts for different routes. The algorithm should also very quickly compute a hash, because each router will have to perform a large number of operations.

**[0017]** Another characteristic feature of each router is the maintenance of two tables. Flow tables associate a given flow with the route identifier (Fig. 1). The path table contains the route IDs and information on them (Fig. 2).

**[0018]** One table is used for handling each packet. The flow table is required to service packets that do not yet contain the route ID. These are the packets that are incoming to the domain. The path table is required to service packets that already contain the route ID.

**[0019]** Figure 3 shows packets as handled by the invented device. Below is a description of each of the steps.

**[0020]** The first step is to check whether the incoming packet contains the route ID (**X**). Then, depending on whether the packet contains the route ID or not, the router acts as follows:

For each packet without path ID, (entering a domain):

1. The router checks whether the flow ID associated with the packet exists in flow table (**A**).
2. If the flow is in the flow table:

- a. The router reads the route ID from the flow table as seen from the perspective of the next node, and also reads the output interface (**B**).
- b. The router puts the route ID field value to the packet as seen from the perspective of the next node (**C**).
- c. The router updates the Time of the last packet field by putting the current timestamp (**D**).
- d. The router forwards the packet to the output interface that was read from the table (**E**).

3. If the flow is not in the flow table:

- a. The router determines the path to the end of the domain (to the destination node or the last node in the domain, if the destination node is outside the domain). The path is represented as a list of nodes (**F**).
- b. The router determines "the path ID as seen from the perspective of the next node"

and also reads the output interface for packets (G).

c. The router creates a new entry in the flow table and puts the designated values in the appropriate fields (H)

d. The router forwards the packet to the designated output interface (I)

**[0021]** For each packet that **already has a path ID** (served in the domain):

1. The router checks whether the route read from the packet is in the path table (J)

2. If the route appears in the path table:

a. The router reads the path ID as seen from the perspective of the next node, and also reads the output interface from the path table (K)

b. The router replaces the path ID in the packet to the value read from the path ID field as seen from the perspective of the next node (L)

c. The router forwards the packet to the next node (M)

3. If the route does not appear in the path table:

a. The router determines the route (list of nodes), the ID of which equals the path ID recorded in the the packet (N)

b. The router determines the path ID as seen from the perspective of the next node, as well as the Output interface, and then adds an entry in the path table. (O)

c. Packets support returns to point 2b.

**[0022]** For each packet leaving the domain:

1. The router deletes the path ID in the IP header.

2. The router sends the packet outside the domain according to the operation of a traditional IP network.

**[0023]** The invention as described in the patent has a great advantage, as it reduces the number of flows that each router has to remember in their table. In the FAM-TAR invention, there are as many entries in each FFT table as there are currently supported flows in the router. These values can reach millions on core nodes and maintaining such large tables is an inefficient solution. In the invention described in this patent, only the edge routers maintain the flow list. Intermediary routers within a domain keep only a list of possible routes; this is a static list, and its size does not exceed one thousand, even for the largest networks.

## Claims

1. Router for data transmission in ICT networks, **char-**

**acterized in that** it maintenance of two tables, namely flow table associating a given flow with the route identifier, and route table containing the route IDs and information on them.

2. Packet for data transmission in ICT networks, **characterized in that** the domain has route ID.

3. Method of data transmission in ICT networks, **characterized in that** for transmission of packets the domain route is used for selection of output port of route.

Flow ID ( <i>flow_id</i> )	NHPath ID ( <i>NHpath_id</i> )	Output interface ( <i>int_id</i> )	Time of last packet ( <i>timestamp</i> )

Figure 1 – Structure of the flow table

Path ID ( <i>path_id</i> )	NHPath ID ( <i>NHpath_id</i> )	Output interface ( <i>int_id</i> )

Figure 2 – Structure of the path table

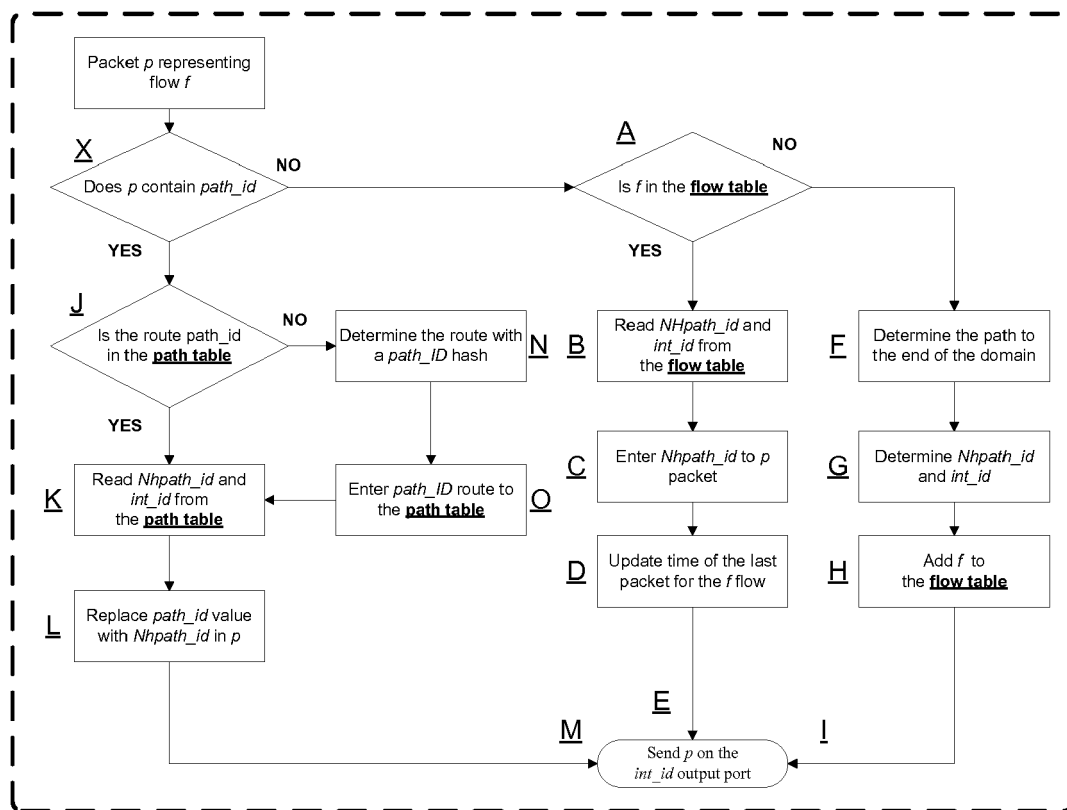


Figure 3 – Block diagram of the packets handling in the flow aggregation mechanism



## EUROPEAN SEARCH REPORT

Application Number  
EP 15 19 3316

5

10

15

20

25

30

35

40

45

50

55

DOCUMENTS CONSIDERED TO BE RELEVANT			
Category	Citation of document with indication, where appropriate, of relevant passages	Relevant to claim	CLASSIFICATION OF THE APPLICATION (IPC)
X	US 2005/083936 A1 (MA QINGMING [US]) 21 April 2005 (2005-04-21) * paragraphs [0030], [0032], [0070], [0077] - [0092], [0095], [0096] *	1-3	INV. H04L12/721 H04L12/741
X	EP 2 632 091 A1 (NEC CORP [JP]) 28 August 2013 (2013-08-28) * paragraphs [0008], [0009], [0012] - [0015], [0020] - [0024], [0040] - [0052] *	1-3	ADD. H04L12/743
A,D	US 2015/063118 A1 (DOMZAL JERZY [PL] ET AL) 5 March 2015 (2015-03-05) * the whole document *	1-3	
A	WOJCIK ROBERT ET AL: "Flow-Aware Multi-Topology Adaptive Routing", IEEE COMMUNICATIONS LETTERS, IEEE SERVICE CENTER, PISCATAWAY, NJ, US, vol. 18, no. 9, 1 September 2014 (2014-09-01), pages 1539-1542, XP011558405, ISSN: 1089-7798, DOI: 10.1109/LCOMM.2014.2334314 [retrieved on 2014-09-08] * the whole document *	1-3	
			TECHNICAL FIELDS SEARCHED (IPC)
			H04L
The present search report has been drawn up for all claims			
Place of search <b>Munich</b>		Date of completion of the search <b>21 October 2016</b>	Examiner <b>Ramenzoni, Stefano</b>
CATEGORY OF CITED DOCUMENTS X : particularly relevant if taken alone Y : particularly relevant if combined with another document of the same category A : technological background O : non-written disclosure P : intermediate document T : theory or principle underlying the invention E : earlier patent document, but published on, or after the filing date D : document cited in the application L : document cited for other reasons & : member of the same patent family, corresponding document			

EPO FORM 1503 03.82 (P04C01)

**ANNEX TO THE EUROPEAN SEARCH REPORT  
ON EUROPEAN PATENT APPLICATION NO.**

EP 15 19 3316

5 This annex lists the patent family members relating to the patent documents cited in the above-mentioned European search report.  
The members are as contained in the European Patent Office EDP file on  
The European Patent Office is in no way liable for these particulars which are merely given for the purpose of information.

21-10-2016

Patent document cited in search report	Publication date	Patent family member(s)	Publication date
US 2005083936 A1	21-04-2005	US 7123620 B1 US 2005083936 A1	17-10-2006 21-04-2005
EP 2632091 A1	28-08-2013	CN 103119901 A CN 104702504 A EP 2632091 A1 JP 5674107 B2 JP 2012090058 A US 2013177016 A1 WO 2012053540 A1	22-05-2013 10-06-2015 28-08-2013 25-02-2015 10-05-2012 11-07-2013 26-04-2012
US 2015063118 A1	05-03-2015	EP 2905932 A1 TW 201519603 A US 2015063118 A1	12-08-2015 16-05-2015 05-03-2015

**REFERENCES CITED IN THE DESCRIPTION**

*This list of references cited by the applicant is for the reader's convenience only. It does not form part of the European patent document. Even though great care has been taken in compiling the references, errors or omissions cannot be excluded and the EPO disclaims all liability in this regard.*

**Patent documents cited in the description**

- WO 404986 A [0008]
- WO 2006 A [0009]
- EP 65975 A [0009]
- EP 6751663 B1 [0010]
- EP 1039694 A2 [0010]
- US 8976661 B2 [0011]